

PACIFICA FM 90

Program Listings

Programming is listed by day of the week, with one-time specials noted for their particular date, which is indicated beside the timehack and separated from the title of the special by a slash [/]. This side of the poster lists all programming through Thursday, April 15. Programming for the rest of the month is on the other side.

Sunday

- 10:00 UNFOLDING**
... the universe inside you. Produced by Espiritu Institute, Houston outpost of the human potential movement.
- 11:00 MARTIN LUTHER KING SPEAKS**
In an interesting broadcast produced by Southern Christian Leadership Conference. Excerpts from the slain humanitarian's speeches are laid against documentary material with relevance to the message King gave us.
- 11:30 CHARLES NUNN**
Rhythm and blues. Pure and simple. With the request lines open at 224-4000.
- 1:00 CAESAR'S PLACE**
This man has jazz, and likes hearing from people who like hearing what he offers (and has to offer), which includes requests, phoned to 224-4000.
- 4:00 AS I PLEASE**
KPFT's weekly exercise in permissiveness. On April 11, Nathan Fain.
- 6:00 BLUEGRASS WITH JOHN MAY**
Early last month, John produced a bluegrass special which got rave reviews from listener sponsors who heard it. He hardly scratched the surface.
- 8:00 THE CHILIASTIC HIDEON**
Can a college professor, a late-night movie addict and a cheerful freak find happiness together on the radio? (They have so far.)
- 10:00 BARD AT LARGE: RAE LAKE COSTAS**
Electronic poesy and minstrelsy, assembled by a card-carrying bard. Who loves you.
- 11:00 THE JOE BLEAKIE RADIO PROGRAM**
Joe plays a hard-rock wake for the weekend so loud that your ears will be ringing next Friday night.

Monday

- 6:00 OPENERS**
Mike August, a reform Druid, conducts KPFT's dawn series, concentrating on music audible above running showers, humming razors and frying eggs.
- 9:00 BEN TEAGUE AND HIS WIRELESS MESSAGE**
The medium, of course, is radio, and the message is classical music, and talk about it, and the difference between Ben and the folks over at brand-X classical radio... is a matter of body temperature. Ben is 99 per cent pomposity-free.
- 12:00 ZULEIKA DOBSON**
Is the irresistible (and unattainable) heroine of Max Beerbohm's fantasy novel, Bill Cavness' April selection on *Reading Aloud*?
- 12:30 THE GARAGE SALE**
Louisa Shaw conducts Pacifica's weekly inventory of noises from the in- and out-baskets, with you,

- trating on his interests other than mercantile.
- 12/SCHOOL BOARD**
Four liberals, three conservatives, one harried superintendent of schools, an auditorium full of angry and/or watchful citizens and students and Mitch Green of the News Group, to narrate for you that which sound alone does not describe.
- 9:00 THE JAZZLADY**
Dorothy Shelley, bringing you the sounds of modern American music, love. And what can we say? Only that our telepathic audience surveys show love feeding back as Dorothy pours it out.
- 11:00 LIFERAFT**
Feelgood music, including unexpected excursions into rural and bluesy precincts, punctuated by talk on matters dire and trifling, including talk-back from listeners who phone 224-4000 to have their say.

Tuesday

- 6:00 OPENERS**
Mike August with vitamin music for the bored abed and brushes with reality provided by the News Group.
- 9:00 BEN TEAGUE AND HIS WIRELESS MESSAGE**
Baby Ben couldn't decide whether to run away with the circus or run away with the New York Philharmonic. This is the result.
- 12:00 ZULEIKA DOBSON**
Beerbohm's durable fluff about a Venus mantrap, recited by Bill Cavness, our expert at *Reading Aloud*.
- 12:30 THE GARAGE SALE**
Louisa Shaw is the Bostonian proprietress of KPFT's permanent audio fire sale, where the hot commerce of ideas is cooled by kindly music.
- 2:00 M.O.B.**
What the title means to Juliette Brown is Her Own Business, and the business of Juliette is cityfolk music, a surprising amount of which is live and in stereo.
- 4:00 EVERYTHING YOU ALWAYS WANTED TO KNOW ABOUT NEW ZEALAND* [*BUT WERE AFRAID TO ASK]**
- 5:00 6/ELECTRONIC MAGAZINE**
By profession, UCLA's map curator, by avocation, the best audio essayist west' of the Continental divide. Carlos Hagen, a Chileño, looks at his adopted country and sometimes finds faults other than the San Andreas, but distancing of his perceptions makes them keen and calm. Produced at Pacifica KPFK in Los Angeles.
- 6:00 LIFE ON EARTH**
Mitch Green, Gary Thiher



The Winter Soldier

The first weekend in April, KPFT will devote most of its program service to 22 hours of testimony recorded January 31 - February 2 of this year at the Winter Soldier Investigation in Detroit.

The investigation was put together by people like Jane Fonda and Mark Lane, outspoken opponents of the American war in Southeast Asia, and while what you will hear is not testimony in a military or civil court of law, neither is it the words of noncombatants like Lane, Miss Fonda, Vice-President Agnew, you or the staff of this radio station.

Most American publications and broadcast stations chose to ignore the investigation, and those of us at KPFT with backgrounds in conventional journalism can understand, having previewed the material, how the nature of its content resulted in media silence.

Almost every voice you will hear is that of an honorably discharged American Vietnam veteran - more than a hundred, in all. The talk includes oppositional opinion against the war, ranging from bitter bewilderment to stencilled remarks about imperialist aggression, but the great bulk of this disturbing two-day broadcast is soldiers' shop-talk about the business of killing, burning and cleaning up, including the way reports of American actions are laundered in the field itself by policies of military journalism.

- 8:00 13/OEDIPUS/OEDIPÉ**
In a remarkable bi-lingual (French and English) production from the CBC. Recommended for listening in stereo...
- 9:00 THE JAZZ LADY**
is Dorothy Shelley, this fair area's only week-nightly exemplar of modern American music.
- 11:00 LIFERAFT**
Jeff Shero skips the late-night adventure in audio pluralism. All of the players are playing together and all of the heavies are light as a feather. (Or made to seem so.)

7/THE TEXAS FARM WORKER
Lin Eubanks conducts a two-hour analysis of the history and struggle of the migrant worker, with emphasis on current attempts at equality through union organizing.

14/PLUM LOCO and VARIETIES OF LOVE
Original radio theatre, western-style, with a plum loco cast of varmints, coots, saloon-belles, schoolmarms and pun-crazy whipper snips.

"Varieties of Love" is a talk by Dr. Ralph Greenson of the Department of Psychiatry at UCLA, a speaker of uncommon warmth and understanding.

Wednesday

- 6:00 OPENERS**
Pop designed to snap your alpha waves into daytime rhythms, with crackling continuity devised and delivered by Mike August.
- 9:00 THE EDUCATION OF A RECORD COLLECTOR**
Ed Mignon, by name, whose collection includes examples of *lieder*, displayed for the delectation of you, dear listener, and of Ben Teague, whose morning off this is because of...



- Saturday, April 3**
12 noon: Introduction and First Marine Division Panel
1:45 First Air Cavalry Division Panel
3:30 Panel on Weapons Technology Used in Indochina
5:45 Panel on Prisoners of War
8:30 Panel of Veterans From Various Units With Vietnam Duty Tours.
10:45 Panel on Racism

- Sunday, April 4**
12 noon: Introduction and 25th Infantry Division Panel with Special Testimony on IncurSIONS into Laos and Cambodia and on Censorship of News in Both Areas.
2:15 Black Veterans Panel
3:45 Third Marine Division Panel
5:30 Airborne Divisions Panel
7:00 1st, 4th and 9th Infantry Divisions Panel
9:30 Americal Division Panel
10:30 Medical Panel

Thursday

- 6:00 OPENERS**
A joker will do for openers around Pacifica, and Mike August is the man.
- 9:00 BEN TEAGUE AND HIS WIRELESS MESSAGE**
Electrical, eclectic, without the desiccation usually attendant to such a presentation. (Serious music, friendly voice.)
- 12:00 ZULEIKA DOBSON**
NOON Beerbohm was to fantasy as Planck was to physics. Constant reader-aloud Bill Cavness spins Max's magic web about the deadly *démise*.
- 12:30 THE GARAGE SALE**
Louisa Shaw, with your aid, in an information-processing sequence as comfortable as snapping peas.
- 2:00 M.O.B.**
Juliette Brown's mob are a folksy lot, pickin' and singin' and grinnin' jes as live as all git-out, most usually.
- 4:00 EVERYTHING YOU ALWAYS WANTED TO KNOW ABOUT NEW ZEALAND* [*BUT WERE AFRAID TO ASK]**
- 5:00 ELECTRONIC MAGAZINE**

- 12:30 THE GARAGE SALE**
Louisa Shaw is the Ed Sullivan of the intellectual jet set, hawking nuggets of art and good sense spotted in the torrent of junk-mail radio which passes through our p.o. box. Her musical selections hold it all together.
- 2:00 FROM PACIFICA**
An anthology of programs produced by our sister stations in Berkeley (KPFA), New York (WBAI) and Los Angeles (KPFK).
2/The Old Swimming Sewer
A report on water pollution in the New York City area. Produced by Bill Schechner with technical production by Peter Zanger. (WBAI).
9/Renoir, My Father
Film director Jean Renoir reads from his book about his father, the impressionist painter, Auguste Renoir. (KPFK) and *Peris of Loving*
Dr. Ralph Greenson, professor of clinical psychiatry at UCLA, pops up again, this time in a conversation recorded in Santa Barbara about the difficulties of authentic and open loving in present society.
- 4:00 EVERYTHING YOU ALWAYS WANTED TO KNOW ABOUT NEW ZEALAND* [*BUT WERE AFRAID TO ASK]**
- 5:00 STUDS' PLACE**
Nicholas Johnson visits with Studs.
- 6:00 LIFE ON EARTH**
All human life is there, from Madame Binh to Leona Weber and the Solid Rock League of Women, observed by the AP, Pacifica's far-flung informants and reported by Thiher, Green & Company, the KPFT News Group.
- 7:15 2/BACK TO METHUSELAH, PART I**
The Pacifica Players production of the George Bernard Shaw play. **WARNING:** GBS was a Fabian socialist. At 8:15, the drama will be followed by a program memorializing Don McNeil, a brilliant young radical journalist who drowned just as his work was gaining recognition.
- 9/BACK TO METHUSELAH, PART II**
The Pacifica Players production of the George Bernard Shaw play. **WARNING:** GBS was a misogynist. And a vegetarian. At 8:30, an interview with Karl Hess, the bearded anarchist who wrote Barry Goldwater's 1964 speeches, including the sentence "Extremism in defense of liberty is no vice; moderation in the pursuit of justice is no virtue." Right and left on, Karl.
- 9:00 THE JAZZLADY**
From Memphis to St. Paul, from the Manned Spacecraft Center to the Astro dome. Dorothy Shelley and the sound of modern American music.
- 11:00 LIFERAFT**
Skipper Shero hands over the log and his ball bearings to L. Lee, who leads a motley crew of rabble from steerage in a slightly less coherent edition of the talk-rock show.

Saturday

- 11:30 10/FREE SCHOOLS**
People from the University of

6:00 OPENERS
Mike August, a reform Druid, conducts KPFT's dawn series, concentrating on music audible above running showers, humming razors and frying eggs.

9:00 BEN TEAGUE AND HIS WIRELESS MESSAGE
The medium, of course, is radio, and the message is classical music, and talk about it, and the difference between Ben and the folks over at brand-X classical radio is a matter of body temperature. Ben is 99 per cent pomposity-free.

12:00 ZULEIKA DOBSON
Is the irresistible (and unattainable) heroine of Max Beerbohm's fantasy novel, Bill Cavness' April selection on *Reading Aloud*?

12:30 THE GARAGE SALE
Louisa Shaw conducts Pacifica's weekdaily inventory of noises from the in- and out-baskets, with you, gentle listener, guiding her hand (and those of her collaborators) by cheering or booing via 224-4000.

2:00 5/SIR GAWAIN AND THE GREEN KNIGHT
The medieval romance performed in the original Middle English by the Gawain Players, directed by Paul Piehler.

12/PAUL SILLS' STORY THEATRE
"As cheerful and unassuming as a nosegay of wildflowers," according to *New York* magazine's John Simon, allegedly the hardest-to-please of all New York critics. It's a current, and huge, hit on Broadway. Improvisational performing and Dylan and Beatles songs are mixed up with old fairy tales. Walter Kerr called it "giddy and fast, transparent and hallucinatory."

4:00 EVERYTHING YOU ALWAYS WANTED TO KNOW ABOUT NEW ZEALAND* [*BUT WERE AFRAID TO ASK]

5:00 CLOSE TO HOME
Urban survival techniques, forwarded to you in chips and chunks listenable while homeward bound on a freeway or while sitting at home fretting about how to disguise chicken necks with *cordons bleus* techniques. Lin Eubanks and her informants steer you through the world of loss-leaders, referral-scheme aluminum siding contracts and will tilt, when required, with public servants who forget Their Place. This show will be heard each Monday in April, but becomes a five-day-a-week affair in gentle jumps, described in listings below.

6:00 LIFE ON EARTH
Mitch Green and Gary Thiher lead the KPFT News Group in a 75-minute conversational newscast that starts with the world at large and narrows its focus to Texas and Houston just as the TV boys are getting done with their versions of the news. Margo Adler reports from Washington, D.C., and Kaye Northcott and Molly Ivins, from Austin. Detailed attention is given to the workings of City Council, Commissioners Court and *ad hoc* bodies, such as environmental boards. The supporting cast usually includes Nancy Simpson, Danny Lyons, Susan Montgomery and Larry Lee. A team of economic analysts is on standby, and newsmakers themselves often drop in.

7:15 REPORT TO THE LISTENER
KPFT's weekly state-of-the-station riff, featuring love letters, hate mail, balance sheets, dire warnings and wild hopes and expectations.

7:30 REFLECTIONS OF A BALDING LONGHAIR
The title pretty well describes the state of Abbie Lipschutz' head. Mr. Lipschutz is a diamond merchant, political activist and musical scholar, and his Monday evening at-homes are comfortable affairs concern-

with the time means to Juliette Brown is Her Own Business, and the business of Juliette is cityfolk music, a surprising amount of which is live and in stereo.

4:00 EVERYTHING YOU ALWAYS WANTED TO KNOW ABOUT NEW ZEALAND* [*BUT WERE AFRAID TO ASK]

5:00 6/ELECTRONIC MAGAZINE
By profession, UCLA's map curator, by avocation, the best audio essayist west of the Continental divide. Carlos Hagen, a Chileno, looks at his adopted country and sometimes finds faults other than the San Andreas, but distancing of his perceptions makes them keen and calm. Produced at Pacifica KPFK in Los Angeles.

6:00 LIFE ON EARTH
Mitch Green, Gary Thiher and the other News Group staffers listen to loud-mouths and seek out quieter voices, piecing together a 75-minute news program that reporters for other stations have confessed to finding indispensable.

7:15 TAXMAN
Every year, the IRS swears they'll make it simpler, but what happened to the card form? KPFT's certified public accountant will be on hand the first two Tuesdays in April to advise you on the niceties of rendering unto Caesar. If you have a tax question, phone 224-4000 for his informal suggestions.

8:00 6/PEOPLE WHO HATE
Dr. Ralph Greenson in one of Pacifica Radio's most-requested broadcasts. The talk is speculative pathology in layman's terms, and is must listening for those of you who dynamited our station twice last year.

Wednesday

6:00 OPENERS
Pop designed to snap your alpha waves into daytime rhythms, with crackling continuity devised and delivered by Mike August.

9:00 THE EDUCATION OF A RECORD COLLECTOR
Ed Mignon, by name, whose collection includes examples of *lieder*, displayed for the delectation of you, dear listener, and of Ben Teague, whose morning off this is because of . . .

10:00 HOUSTON CITY COUNCIL
Gary Thiher and/or Mitch Green provide the whispered continuity (Mayor Welch rankles at our presence) for the Wednesday-morning Council sessions in which the city gets to talk back to its leaders. Sometimes the Council's rebuttal occurs during morning session, and sometimes it is delayed until 2 p.m., in which case we pre-empt for it. When Council ends early, Teaguesque classics flow forth.

12:00 NOON ZULEIKA DOBSON
Bill Cavness, world's champion at *Reading Aloud*, with Max Beerbohm's tale about the girl who couldn't say yes.

12:30 THE GARAGE SALE
Louisa Shaw conducts Pacifica's eternal sneak preview of itself each weekday at this hour, buffering the oddities and niceties with her own steady sense of pleasant music.

2:00 IN LIEU OF LOUIE
On those Wednesday afternoons when KPFT does not cover a second session of City Council, the station presents one-time specials.



4:00 EVERYTHING YOU ALWAYS WANTED TO KNOW ABOUT NEW ZEALAND* [*BUT WERE AFRAID TO ASK]
The history, musics and lifesounds of a two-island country where hot winter is cooling into spring about now.

5:00 STUDS' PLACE
7/Phil Ochs, the topical singer who visited Houston last month, talks with Studs Terkel of Chicago's WFMT.

6:00 LIFE ON EARTH
14/John Lewis, founding force of the Modern Jazz Quartet, visits with Studs.

6:00 LIFE ON EARTH
Union, victory, faith, identity time. The modern reports, collated by Mitch Green, Gary Thiher and the far-flung, strung-out troops of the Pacifica News Group, including Margo Adler in Washington and Kaye Northcott and Molly Ivins in Austin.

7:00 THE LOS ANGELES PHILHARMONIC
Zubin Mehta conducting a series of concerts produced by Pacifica/Los Angeles under a grant from The Corporation for Public Broadcasting. Because of union contracts, none of these concerts will be repeated, and many include readings under Mehta which will not be available on tape or disc for some long time, if ever. The program is announced on the air for a few days before each concert.

9:00 THE JAZZLADY
Is Dorothy Shelley, and the jazz, her private collection. She's open to suggestions about selections. Send mash mail to Dorothy at KPFT, 618 Prairie, Houston 77002.

11:00 LIFERAFT
Good Old Jeff, and good old music (and new music) and a raftload of friends real (like yourself, via 224-4000) and imaginary (like Snappy Sammy Smoot and all the others impersonated by G*v*n D*(*)y).

OPENS, schoolrooms and pun-crazy whipper snips.

"Varieties of Love" is a talk by Dr. Ralph Greenson of the Department of Psychiatry at UCLA, a speaker of uncommon warmth and understanding.

12:00 ZULEIKA DOBSON
Beerbohm was to fantasy as Planck was to physics. Constant reader-aloud Bill Cavness spins Max's magic web about the deadly *demoiselle*.

12:30 THE GARAGE SALE
Louisa Shaw, with your aid, in an information-processing sequence as comfortable as snapping peas.

2:00 M.O.B.
Juliette Brown's mob are a folksy lot, pickin' and singin' and grinnin' jes as live as all git-out, most usually.

4:00 EVERYTHING YOU ALWAYS WANTED TO KNOW ABOUT NEW ZEALAND* [*BUT WERE AFRAID TO ASK]

5:00 ELECTRONIC MAGAZINE
Angeleno-born-Chileno Carlos Hagen, purrs in a burr that sounds like Andean heather. His audio essays are produced by sister station Pacifica KPFK, Los Angeles.

6:00 LIFE ON EARTH
Seventy-five minutes of news edited for people who already know a lot about what's going on. Gary Thiher and Mitch Green are the ringmasters, and the show starts with world events, narrowing its scope to Texas and Houston 'round about the 6:30 station break.

7:15 YEAGER, YEAGER, RYAN & KAFKA
The deceased senior partner, K., utilizes a transistorized Ouija board to direct the activities of his corporal lieutenants. The media are the principal preoccupation of the cousins Yeager and their buddy, Mr. Ryan, all of whom view the current madness in a curiously Jesuitical way. (Remember the Goliards?)

9:00 THE JAZZLADY
Dorothy Shelley, doing her thing and, hopefully, yours.

11:00 LIFERAFT
Jef Shero at the helm, navigating latitudes of calm and storm with listeners aboard, via 224-4000.

Friday

6:00 OPENERS
Mike August conducts KPFT's cornflake concert, and will say almost anything to trick you into getting up.

9:00 BEN TEAGUE AND HIS WIRELESS MESSAGE
"Classical music is anything played by people wearing tuxedos," according to a sign in the station's record library. Exempting the Meyer Davis Orchestra, Ben plays it, but you can listen naked, for all he cares.

12:00 NOON ZULEIKA DOBSON
Bill Cavness reading aloud Max Beerbohm's fantasy about the girl with fatal charms.

moderation in the pursuit of justice is no virtue." Right and left on, Karl.

9:00 THE JAZZLADY
From Memphis to St. Paul, from the Manned Spacecraft Center to the AstroDome, Dorothy Shelley and the sound of modern American music.

11:00 LIFERAFT
Skipper Shero hands over the log and his ball bearings to L. Lee, who leads a motley crew of rabble from steerage in a slightly less coherent edition of the talk-rock show.

Saturday

11:30 10/FREE SCHOOLS
People from the University of Thought, led in this program by Richard Turner, discuss alternatives within education and alternatives to its present forms.

12:00 NOON 10/COOKIEJAR
In medieval and Renaissance times, children were regarded as ordinary human beings, different only because their age generally made them smaller than most people. Fran Teague, an aged child herself, deals with her listeners on those terms.

1:30 TAXMAN
KPFT's telephonic attempt to straighten things out for you before next Thursday midnight. Our friendly visiting CPA will dole out advice easily worth the price of your subscription, should you have an especially favorable capital-gains situation.

2:00 10/THERE'S A BROKEN LIGHT FOR EVERY HEART ON OLD BROADWAY
10/*Candide*, regarded by many observers of the flash-in-the-pan as the top of the flops. Leonard Bernstein, Lillian Hellmann, Richard Wilbur, many famous names go down aboard this one, writing and singing their hearts out.

3:00 10/THE EDUCATION OF PETER KELLY
If you're Irish, it's okay to lie, right? Only Peter Kelly insists on insisting, live and in stereo, that the narrative interstices of this show are true. Honest-to-Pete.

6:00 10/GARLAND, FADIMAN AND DON JUAN IN HELL
Clifton Fadiman wrote the essay that ties this unusual program together. We won't spoil it by saying more, except that it's the kind of program that makes a lot of people happy Pacifica is here.

10:00 EVENING RAGAS
Selected and arrayed by Shankar Bhattacharyya.

12:00 Midnight FOLLOW BLUE ARROW
The grasses got worn where the horses rode over it so they paved a simple two-lane road. Soon that wasn't enough and the two lanes became four which of course had to go to eight so that it would be easier to build sixteen. At thirty two they moved everything underground and piped in music from xexex for the rush hour.



Sign Me Up

Sign me up as a Pacifica listener-sponsor. Here is what kind of subscriber I am:

- ONE OF THE 800**
A new or renewing member of The 800. I give you \$60 a year and get the monthly *Folio* poster and, once paid up, a signed and numbered etching by Houston artist Bob Fowler.
 \$60 full payment enclosed.
 Bill me \$15 every three months.
 Bill me \$5 a month.
- A SALT-OF-THE-EARTH SUBSCRIBER**
A new or renewing regular subscriber, a member of Pacifica's unsilent majority. I give you \$24 a year, get the monthly *Folio* poster and a lot of love from KPFT.
 \$24 full payment enclosed.
 Bill me \$6 a month for the next four months.
- A CONSCIOUSNESS-III SUBSCRIBER**
A student, retired or unemployed person, an enlisted member of the armed forces. I give you \$12 a year and get the monthly *Folio* poster and Pacifica's fond wishes for better times and kind remembrance of us.
 \$12 full payment enclosed
 Bill me \$6 a month for the next two months.

Next January, KPFT will send you a contribution receipt to file with your income tax, because your subscription is tax-deductible. The station doesn't sell or swap its mailing list with anybody. *Anybody*.

name _____
street address or PO box number _____
city _____ state _____ zip _____
telephone _____

APRIL 1-15, 1971

PACIFICA FM 90

Sunday

- 10:00 UNFOLDING**
Learning to feel things again, or for the first time. Your tutors are the crew from Espiritu Institute, and if we stopped at calling them Gestaltists, you might suppose they worshipped sapphires, or something, which is not the case. Others are putting on coats and ties to worship God while the Unfolding people ask you to relax an hour and consider that You are He.
- 11:00 MARTIN LUTHER KING SPEAKS**
In excerpts from many speeches in many places (some from Pacifica archives), woven most artfully into a Southern Christian Leadership Conference radio program about the way his work goes on.
- 11:30 CHARLES NUNN**
R & B. To make requests: 224-4000.
- 1:00 CAESAR'S PLACE**
Jazz. And Caesar Grey is open to suggestions phoned in at 224-4000.
- 4:00 AS I PLEASE**
KPFT's weekly experiment in permissiveness.
18/Glenn English, KPFT's chief engineer, talks with others, including you, if you like, about what would happen if the government were handed over to a HAL-9000 type computer which asked our opinion on everything constantly. Although Glen reads *National Review* cover to cover, this sounds like utopian technocracy to the Folio department.
18/Fran Teague, whose Saturday broadcast is for children, transmits to adults this time around. Fran grew up listening to the CBC, and so makes more sense than a lot of people around here.
- 6:00 BLUEGRASS WITH JOHN MAY**
As someone has put it, one edition of this broadcast contains more genuine bluegrass than all the other radio stations in town put together have played over the past three years. The genuine article is remarkably energizing and yet, the FCC hasn't threatened to ban it.
- 8:00 THE CHILIASTIC HIDEON**
Para-intellectual forces from zipcode 006 weave rock and roll, anti-psychiatry, movie arcana, synthesized music and their own turns of mind, which are intricate, into a broadcast not recommended for those with two-digit IQ's.
- 10:00 BARD AT LARGE: RAE LAKE COSTAS**
Rae found bardhood tough going, what with audiences for this sort of thing being so hard to compile. We pointed you out to her. She loves you.
- 11:00 THE JOE BLEAKIE RADIO PROGRAM**
Once had a Latin name, but that seemed unfitting. Remember when dentists experimented with using loud music to kill the pain of drilling your teeth? That's Joe's theory on dealing with the painful passage from weekend to work-week.
If you live in an apartment with thin walls, you can do almost anything while this show is on, and the neighbors never will figure it out.

Monday

- 9:00 THE JAZZ LADY**
Mellow Dorothy Shelley and music that sounds superb on rainy nights. Merely beautiful, otherwise.
- 11:00 LIFERAFT**
Jeff Shero uses music (rock, folk, country, blues) as the mortar for this late night epic starring people who sometimes hardly speak to each other in daylight hours.

A Pacifica Debut: Close to Home

"Mercy, I cry, city!" As the song goes. Lin Eubanks and her intrepid fellow adventurers navigate the shallows and darks and deeps and the long and the short of the place, and their goal is the simplification of their (perhaps, your) life within it. This isn't a homemakers' show. The kind of canning the C.T.H. crew think about is canning incompetent civil servants. But, then, the guerrilla tactics described deal with freeway driving techniques, supermarket rip-offs and/or super bargains, and not with draining Buffalo Bayou or blowing up Sam Houston's statue. It all boils down to a tussle over whether certain items are common knowledge or proprietary information. Lin and her friends think you have the need to know. This is a new show, one that will begin creeping into the 5 p.m. weekday slot, day-by-day, and, as a new show, is one of those listener sponsors should give special attention to shaping. Send your plonk-list or an inventory of suggested riffs and routines to *Close to Home*, KPFT, 618 Prairie, Houston 77002, or phone Lin at 224-4000 between 9 a.m. and 3 p.m.

Tuesday

- 6:00 OPENERS**
Mike August sits alone in a little room and uses radio waves to affect your mind. The object is to ease you into the morning.
- 9:00 BEN TEAGUE AND HIS WIRELESS MESSAGE**
Ben is something of a romantic, it is rumored, but impressionism, sheer classicism and other schools get a hearing.
- 12:00 noon ZULEIKA DOBSON**
Bill Cavness, *Reading Aloud* Max Beerbohm's soufflé about a lass of fatal charm.
- 12:30 THE GARAGE SALE**
What are Alief? Alief are a suburb, and Betty Strawberry (her real last name is something like that) brings Alief home to the rest of us (and Pacifica to Alief) in two special Tuesday broadcasts, pre-empting Louisa Shaw's editorship.
- 2:00 M.O.B.**
Juliette Brown, introducing guests from the world of folk music, live and recorded.
- 4:00 EVERYTHING YOU ALWAYS WANTED TO KNOW ABOUT NEW ZEALAND* (*BUT WERE AFRAID TO ASK)**
- 5:00 CLOSE TO HOME**
Can one-and-a-half million people living together at the edge of a warm ocean find happiness together? Lin Eubanks and allies say: "Difficult, but possible."
- 6:00 LIFE ON EARTH**
Gary Thiher and Mitch Green direct the Pacifica news group

Thursday

- 6:00 OPENERS**
Music to get out of bed (or to fail to get out of bed) by, strung together by Mike August, with News Group punctuations.
- 9:00 BEN TEAGUE AND HIS WIRELESS MESSAGE**
Look, Ma! No wires. But strings. And brass. And horns. Unseriously, folks, the music is serious.
- 12:00 noon ZULEIKA DOBSON**
Bill Cavness demonstrates exactly how durable a fantasy book can be — in this case, Max Beerbohm's best one.
- 12:30 THE GARAGE SALE**
Off-microphone, Louisa Shaw is

whose music is featured in an excellent concert recorded last November by Pacifica/Berkeley.
28/Ramsey Clark Visits Studs Terkel. The former U.S. Attorney General talks with the Chicago heavyweight interviewing champ. The Clark/Terkel broadcast will be followed by a News Group special dealing with something that happened since the Folio was printed.

4:00 EVERYTHING YOU ALWAYS WANTED TO KNOW ABOUT NEW ZEALAND* (*BUT WERE AFRAID TO ASK)

5:00 CLOSE TO HOME
Lin Eubanks leads the forces of sanity in the week-daily assault on the problems of city life.

- 4:00 EVERYTHING YOU ALWAYS WANTED TO KNOW ABOUT NEW ZEALAND* (*BUT WERE AFRAID TO ASK)**
- 5:00 CLOSE TO HOME**
Lin Eubanks and her crash course in urban survival.
- 6:00 LIFE ON EARTH**
The panoramic view of the opening minutes narrows, around 6:30 to the upper Texas coast.
- 7:15 YEAGER, YEAGER, RYAN AND KAFKA**
The noted firm of exterminators, in chamber concert.
- 9:00 THE JAZZ LADY**
Dorothy Shelley supplies her effortless definition of the program's title.
- 11:00 LIFERAFT**
Give Jeff Shero your tired, your poor, your huddling masses yearning to hear music and talk to each other.

Friday

- 6:00 OPENERS**
Does Mike August get up just before this program or go to bed just after it's over? It occurs while the News Group sleeps, but you hear them anyhow.
- 9:00 BEN TEAGUE AND HIS WIRELESS MESSAGE**
Classical music for people who hate classical music announcers.
- 12:00 noon ZULEIKA DOBSON**
Sir Max's lighter-than-air invention about a young lady of overwhelming charm.
- 12:30 THE GARAGE SALE**
Louisa Shaw, another young lady of overwhelming charm, but mindful of her effect upon her listeners, which is to open doors and windows you may not have noticed.
- 2:00 FROM PACIFICA**
The Friday-afternoon anthology of super-programs from our sister stations.
23/Danse Macabre. Here's a spring-afternoon cheer-up! The morose Wedekind tragedy, performed by the Pacifica Players.
30/They Remember Bartok. They are: Lili Kraus, Irene Banyay-Palotay, Feri Roth and Eugene Zador, and it's William Malloch, your L.A. Philharmonic host, talking with them.
- 3:00 DUTCH CHAMBER MUSIC**
From Radio Nederland.
- 3:30 THE RADIO**
Is Pacifica/New York's demonstration of the story-telling powers of the medium.
- 4:00 EVERYTHING YOU ALWAYS WANTED TO KNOW ABOUT NEW ZEALAND* (* BUT WERE AFRAID TO ASK)**
- 5:00 STUDS' PLACE**
The Chicago talk specialist. 23/Knots, the kind untied by R. D. Laing, the British psychiatrist in his current almost-best-seller.
30/Armistice Day, recorded *last* Armistice Day, but worth hearing any day a war is in progress.
- 6:00 LIFE ON EARTH**
The News Group expect that you read a newspaper or two and pay attention to network TV news. Their offering is by way of elucidation, addition and, hopefully, illumination.
- 7:15 23/BACK TO METHUSELAH, PART IV**
WARNING: George Bernard Shaw did not suffer fools gladly. (The Pacifica Players production.)

Fine Print

This is Volume 11, No. 2 of *The Folio*, published by KPFT-FM in Houston as a service to its sponsoring listeners. KPFT is owned and operated by Pacifica Foundation, Inc., a California nonprofit corporation also owning and operating noncommercial FM stations KPFA and KPFB in Berkeley-San Francisco, KPFK in Los Angeles and WBAI in New York City.

KPFT broadcasts at 90.1 MHz with an effective radiated power of 48,000 watts from a transmitter site in the city of Houston: studios and offices are at 618 Prairie, Houston 77002. All station departments may be reached by dialing 224-4000. To subscribe, dial 224-9009.

All gifts to KPFT, including subscriptions, are fully tax-deductible, and the station is in the Internal Revenue Service's highest category of deductibility (public charity), which means that you can give Pacifica, and deduct, up to 50 per cent of your adjusted gross income, anyone should be so generous.

Our microphones are open to anyone with anything to say. The ground rules are those of the FCC, good taste and good sense. At this writing, no request for air time for commentary on issues of public interest has been denied, although we have declined to produce a series featuring a lady who hired two armed guards for her initial visit to the station.

If you know of something you think we ought to broadcast, write or phone us about it. We are likely to respond by asking you to participate in or to advise on production of the material you suggest. In such cases, the station's materials, equipment and technicians are available without cost.

Most of what is heard on KPFT, as well as most of the administrative work around the station, is done by volunteers who receive no pay. Certain engineering business, legal, promotional, continuity and editorial jobs are performed by a paid staff of eleven.

Saturday

- 11:30 FREE SCHOOLS**
Of all kinds, examined by people who created one; the students and faculty (they are the same thing) of The University of Thought.
- 12:00 COOKIE JAR**
Fran Teague talks up to children.
- 1:30 THE RADIO**
Is produced by WBAI, which remembers the story-telling powers of the medium.
- 2:00 THERE'S A BROKEN LIGHT FOR EVERY HEART ON OLD BROADWAY**
Smash flops, edited by our first-nighter.
17/Cry for Us All. A musical version of *Hogan's Goat* from the people who gave us *Man of La Mancha*. Dreeceeam the im pos. ubble dreeceam. Boo-hoo. 24/Kwamina. If you didn't understand English at all, even less than the lyricist, for example, you would think this is a pretty score. Sally Ann Howes is the proper British colonialist who falls in with, and in love with, the black student prince, whose father, the king, is being ill-advised by the witch doctor, Brock Peters, even as revolution is being preached to them all. *Moon*

- 6:00 H. H. HOLLIS**
Reading his own SF stories, and those of his friends. On the 17th, "Homey Atmosphere..."
- 6:30 17/DANA QUARLES PRESENTS THE CULTURAL REVOLUTION**
Pacifica/Houston's hyperthyroid anthologist, chewing up more than most people dare bite off. The title means exactly what it says.
24/SHUBB, WILSON & SHUBB AND INFINITY ROW
Rick Shubb, banjo; Bob Wilson, guitar and Markie Shubb assisting. A stereo production of Pacifica/Berkeley. A warm and personal concert of music the performers quite obviously love.
- 10:00 EVENING RAGAS**
Selected and arrayed by Shankar Bhattacharyya
- 12:00 mid night FOLLOW BLUE ARROW**
pops snaps moody slides of colored changes woven sounds mixed by an occasional opinion.

Pacifica
KPFT
fm 90
Houston, Texas • 224-9009

add
cort
requ

10:00 **BARD AT LARGE: RAE LAKE COSTAS**
Rae found bardhood tough going, what with audiences for this sort of thing being so hard to compile. We pointed you out to her. She loves you.

11:00 **THE JOE BLEAKIE RADIO PROGRAM**
Once had a Latin name, but that seemed unfitting. Remember when dentists experimented with using loud music to kill the pain of drilling your teeth? That's Joe's theory on dealing with the painful passage from weekend to work-week.
If you live in an apartment with thin walls, you can do almost anything while this show is on, and the neighbors never will figure it out.

12:30 **THE GARAGE SALE**
Max Beerbohm's soubrette about a lass of fatal charm.
Jeff Shero, the thousand-voiced Gavan Duffy, blues, folk, country and, yes, rock, and many a live and telephonic visitor.

2:00 **M.O.B.**
Juliette Brown, introducing guests from the world of folk music; live and recorded.

4:00 **EVERYTHING YOU ALWAYS WANTED TO KNOW ABOUT NEW ZEALAND* (*BUT WERE AFRAID TO ASK) CLOSE TO HOME**
Can one-and-a-half million people living together at the edge of a warm ocean find happiness together? Lin Eubanks and allies say: "Difficult, but possible."

5:00 **LIFE ON EARTH**
Gary Thiher and Mitch Green direct the Pacifica news group through its 75-minute look at what the world did to itself today.

7:15 **13/THREE NONCOMBATANTS ON WAR**
1. Tom Wicker of *The New York Times* in a speech his own paper ignored, but *The New Yorker* found worth reporting.
2. George Bernard Shaw
3. William Sloan Coffin, of Yale, in Houston.

Thursday

6:00 **OPENERS**
Music to get out of bed (or to fail to get out of bed) by, strung together by Mike August, with News Group punctuations.

9:00 **BEN TEAGUE AND HIS WIRELESS MESSAGE**
Look, Ma! No wires. But strings. And brass. And horns. Unseriously, folks, the music is serious.

12:00 noon **ZULEIKA DOBSON**
Bill Cavness demonstrates exactly how durable a fantasy book can be — in this case, Max Beerbohm's best one.

12:30 **THE GARAGE SALE**
Off-microphone, Louisa Shaw is KPFT's expert on all the noises clamoring for Pacifica's attention. She is wonderful at making introductions.

2:00 **M.O.B.**
Juliette Brown (A.M.O.R.C.) and folksy friends, live and plastic.

4:00 **EVERYTHING YOU ALWAYS WANTED TO KNOW ABOUT NEW ZEALAND* (* BUT WERE AFRAID TO ASK) STUDS' PLACE**
The Chicago talk specialist. 23/Knots, the kind untied by R. D. Laing, the British psychiatrist in his current almost-best-seller.
30/Armistice Day, recorded last Armistice Day, but worth hearing any day a war is in progress.

5:00 **LIFE ON EARTH**
The News Group expect that you read a newspaper or two and pay attention to network TV news. Their offering is by way of elucidation, addition and, hopefully, illumination.

6:00 **23/BACK TO METHUSELAH, PART IV**
WARNING: George Bernard Shaw did not suffer fools gladly. (The Pacifica Players production.)

7:15 **30/BACK TO METHUSELAH, PART V**
WARNING: George Bernard Shaw believed in ghosts and, upon death, apparently worked hard at being one! (The Pacifica Players production.)

12:00 **COOKIE JAR**
Fran Teague talks up to children.

1:30 **THE RADIO**
Is produced by WBAI, which remembers the story-telling powers of the medium.

2:00 **THERE'S A BROKEN LIGHT FOR EVERY HEART ON OLD BROADWAY**
Smash flops, edited by our first-nighter.
17/Cry for Us All A musical version of *Hogan's Goat* from the people who gave us *Man of La Mancha*. Dreeeeeam the im pos. ubble dreeeam. Boo-hoo.
24/Kwamina. If you didn't understand English at all, even less than the lyricist, for example, you would think this is a pretty score. Sally Ann Howes is the proper British colonialist who falls in with, and in love with, the black student prince, whose father, the king, is being ill-advised by the witch doctor, Brock Peters, even as revolution boils up beneath them all. Wowee-zowie. (This show actually made it to New York!)

3:00 **THE EDUCATION OF PETER KELLY**
Experience keeps a dear school, but fools will have none other,

24/SHUBB, WILSON & SHUBB AND INFINITY ROW
Rick Shubb, banjo; Bob Wilson, guitar and Markie Shubb assisting. A stereo production of Pacifica/Berkeley. A warm and personal concert of music the performers quite obviously love.

10:00 **EVENING RAGAS**
Selected and arrayed by Shankar Bhattacharyya

12:00 **FOLLOW BLUE ARROW**
mid pops snaps
night moody slides of colored changes woven sounds mixed by an occasional opinion.



Monday

6:00 **OPENERS**
The early, early, early show by Mike August, who refuses to let anyone but the news group mess up your mind until you've snapped out of your wake-up trance.

9:00 **BEN TEAGUE AND HIS WIRELESS MESSAGE**
The hand at the controls is the same hand that shook the hand of Beverly Sills last month. The music is serious without getting critical.

12:00 noon **ZULEIKA DOBSON**
The immortal Max's Edwardian Circe, resurrected by Bill Cavness, our specialist in *Reading Aloud*.

12:30 **THE GARAGE SALE**
The grand action of the noises of the world, Louisa Shaw, proprietress.

2:00 **TWO O'CLOCK**
The title is a feeble give-up, but the programming is damn good. 19/Brecht in Hollywood, as remembered by survivors of the era, who recall his brushes with Joe McCarthy, a mind at several removes of subtlety from the playwright's, and what people in that 'leached basin call The Industry. Produced at KPFT, Pacifica Radio in Los Angeles.

26/Jacques Brel is Alive and Well and Living in Paris. A terrifically energetic four-person smash revue, from which was drawn "Marathon" song, so familiar to you now. Grit your teeth through that one, the opener, because the rest is amazing, and, of course, fresher.

7:15 **27/PROBLEMS IN URBAN REPORTING**
Are encountered by Mike August, KPFT's intrepid morning man. Following, at 7:30, a remarkable concert recorded last year by Pacifica/Berkeley, A Leisurely Tour of Keyboard Literature, in this instance, a Prokofiev sonata. The audience sipped sherry and listened by candlelight. You may want to also.

9:00 **THE JAZZLADY**
Roll on, thou dark and deep, warm sounds, roll on. Dorothy Shelley at the controls.

11:00 **LIFERAFT**
Jeff Shero compounds verbal downers with musical uppers, and/or vice versa, depending on the way the world behaved. Ayes and nays from the listeners, via 224-4000.

Wednesday

4:00 **EVERYTHING YOU ALWAYS WANTED TO KNOW ABOUT NEW ZEALAND* (BUT WERE AFRAID TO ASK) CLOSE TO HOME**
Lin Eubanks leads her survival team in special reports prepared to help you decipher the secret ways of the big city most of us find ourselves living in.

6:00 **LIFE ON EARTH**
Gary Thiher, Mitch Green, Susan Montgomery, Danny Lyons, Kaye Northcott, Molly Ivins, Margo Adler and a cast of 2.5 billion in KPFT's daily 75-minute news broadcast.

7:15 **REPORT TO THE LISTENER**
Most usually business manager Walt Silvus, joined by general manager Larry Lee and/or associate manager Tim Mabey, with a state-of-the-station report for KPFT listeners.

7:30 **19/REFLECTIONS OF A BALDING LONGHAIR**
Abbie Lipschutz, by name, who brings live classical (and less serious) performers to the studio and conducts conversations that mix up music with the other interests you'd expect of a longhair.

6:00 **OPENERS**
Mike August is awake; shouldn't you be? (The News Group isn't. They're on tape.)

9:00 **ED MIGNON: THE EDUCATION OF A RECORD COLLECTOR**
And the collection is rich in serious works of vocal music.

10:00 **HOUSTON CITY COUNCIL**
Mitch Green and/or Gary Thiher use an 18th-hole, 20-foot-putt sportscaster's whisper to explain what's going on, because the Mayor will make them stand in the corner if they talk too loud. Presented live.

12:00 noon **ZULEIKA DOBSON**
Bill Cavness, *Reading Aloud* the Max Beerbohm fantasy classic.

12:30 **THE GARAGE SALE**
Louisa Shaw, taking audio inventory with your ayes and nays, cast by telephone.

2:00 **IN LIEU OF LOUIE**
On afternoons when the City Council's second Wednesday session isn't broadcast, we offer special programs as consolation: 21/Bernadette Devlin at LeConte School. The Irish revolutionary in the House of Cummins, speaking in Berkeley and answering questions afterwards. Followed by Steve Reich, the Bay Area composer.

Summer is coming, and many subscribers are students whose good minds and free time are needed by the News Group. Others of you are workers and professionals who may have two weeks without the money to get you and your family to another place. We'd like you to think about spending that time with Pacifica's investigative strike force.

Below are listed ten of the investigative topics we're thinking about. Use the blank at the left of each subject to rank them in the order they interest you, or seem important to you.

If you want to pitch in, fill out the blank below and, if you'd be so kind, amplify upon it by including a note of your own that's more fully descriptive of what you want to do or say than this coupon allows.

If you have leads or materials touching upon any of the subjects listed, send them directly (even anonymously, if need be) along with the coupon.

Late in April and early in May, News Group people will get back to you by phone and/or mail, and start setting up the strike forces.

The other side of this form is a subscription blank for Pacifica radio. We'll be looking at both sides, for sure, and your new or renewal subscription or step-up (or that of a friend) is the best way to make sure that the work we're talking about gets done and gets heard and, maybe, helps recycle a little of the muck. Let us hear.

- A. How, and how well, are drug statutes enforced in Houston?
- B. How, and how well do area governments and taxing authorities work together?
- C. Who's paying for Houston? (An investigation of the taxing base and rates, with special emphasis on the tax status of Ship Channel land and industries.)
- D. The State of the Arts. An investigation of the area's fine and lively arts power structure (or lack of one), including an examination of its funding sources (or lack of them).
- E. No-bills and dropped prosecutions. An investigation of cases halted at the grand jury level by no-bills, including indictments returned after presentment before more than one Grand Jury. An analysis (by offense, alleged offender and defense attorney) of those cases dropped by the District Attorney's office after indictment.
- F. Whither/Whether Houston? A report on the planning commission, including an analysis of ease of access to its determinations in process and to those plans being used by the Public Works Department and independent land developers.

G. Police Force Report Card. An analysis of the city's investment in its police, compared with that in other American cities, and of the structure and professional standards of the department itself, including recruiting and training practices. Descriptions of the racial make-up of the force, and of police-community relations, with emphasis (on a case basis) on allegations of police brutality.

H. Houston and HUD. An analysis of the city's relations with the Department of Housing and Urban Development, with special emphasis on the genesis, composition, goals and actions of the Houston Housing Development Corporation.

I. Media and Minorities. A study of the treatment of minority news and life in the commercial and un-commercial media, with special emphasis on the performance of the electronic media.

J. Who pays for power? An investigation into the sources of political campaign funds in Houston, with special emphasis on City Council, Harris County Commissioners and Houston Independent School District candidacies.

To the KPFT News Group:

Here is my ranking of your projects-in-process:

1 ___ 2 ___ 3 ___ 4 ___ 5 ___ 6 ___ 7 ___ 8 ___ 9 ___ 10 ___

Beyond that,

Check out the note I've enclosed to tell you about other ideas, or ideas on your ideas.

And count on me:

As a working member of one project or another, with special interest in subjects: _____ use letter code

As an off-staff resource person with special knowledge or interest in subjects: _____ use letter code

name _____

street address or p.o. box _____ city _____ zip _____

phone number _____

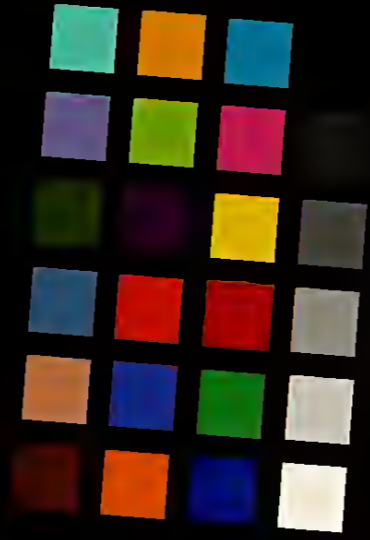
(All information received, as well as your involvement in the News Group strike forces, will be held as privileged communication.)

Pacifica
KPFT
fm 90
618 Prairie
Houston, Texas 77002

address
corrections
requested

NON-PROFIT ORG.
U.S. POSTAGE
PAID
HOUSTON, TEXAS
PERMIT NO. 9273

APRIL 16-30, 1971



11:00 AM
In an effort
to provide
you with the
most accurate
information
possible, we
have used
specialized
equipment to
capture this
documentary
information.
11:30 CHANGES
Have us
reproduce the
documentary
information
from the scan
produced by
Leadship, Inc.
SPEAK
101

