

KQFT

PACIFICA FM 90

AUGUST 1972

# RADIO GUIDE



*manum 72*

WHAT  
ME  
WORRY

**REPUBLICANS '72**  
LIVE FROM MIAMI - SEE CENTER SPREAD

1970

1971

1972



# RISE AND FALL

In early July, we held a staff meeting to discuss an appalling little packet of information. The cover of the packet was the subscription chart above. It also showed that, by June of 1973, progressing at our present rate, we would have a net loss of 252 subscribers.

That being insufficient for suicide, we went through the projected figures for this fiscal year we're in now, the one that ends September 30. Total income for the year will be, at this rate, \$84,000. Last year it was \$186,000. Furthermore, the budget was cut back in 1972, cut to \$132,000. As it became apparent early on that we wouldn't make the income, we cut it even further. Our expenses for fiscal 1972 will be \$105,000, \$27,000 un-

der budget. Aren't we clever?

Further, a good deal of our income went to pay off old debts because no one has been willing to help retire that, so that staff and volunteers have had to do it, at the expense of programming and people's lives. At this time, the debt is \$57,000, more than \$16,000 of it owed to the staff. There are now nine people, former staffers, who are receiving more or less regular checks from KPFT. The station pays as many former staff people each month as it pays current staff people. We can't support this, needless to say.

So we will cut the budget. Expenses are so fixed that the only thing that can be cut is the staff. So the staff, which has supported the station finan-

cially for over two years, will now take another kick in the teeth when some of its members will be laid off. Two staffers have gone off salary voluntarily, and Bill Fuller and myself have taken another pay cut.

On the bright side, Boh Fowler, now on our board of directors and for a long time a very special friend of the station, has completed the third plate in his series of eight etchings for members of the 800 club (now the Five Buck club, because its members pay five dollars a month forever). There are 100 of each etching, all signed, and each valued about \$85. They are given as gifts to people who complete a full year in the club or just pay up the \$60 in one fell swoop.

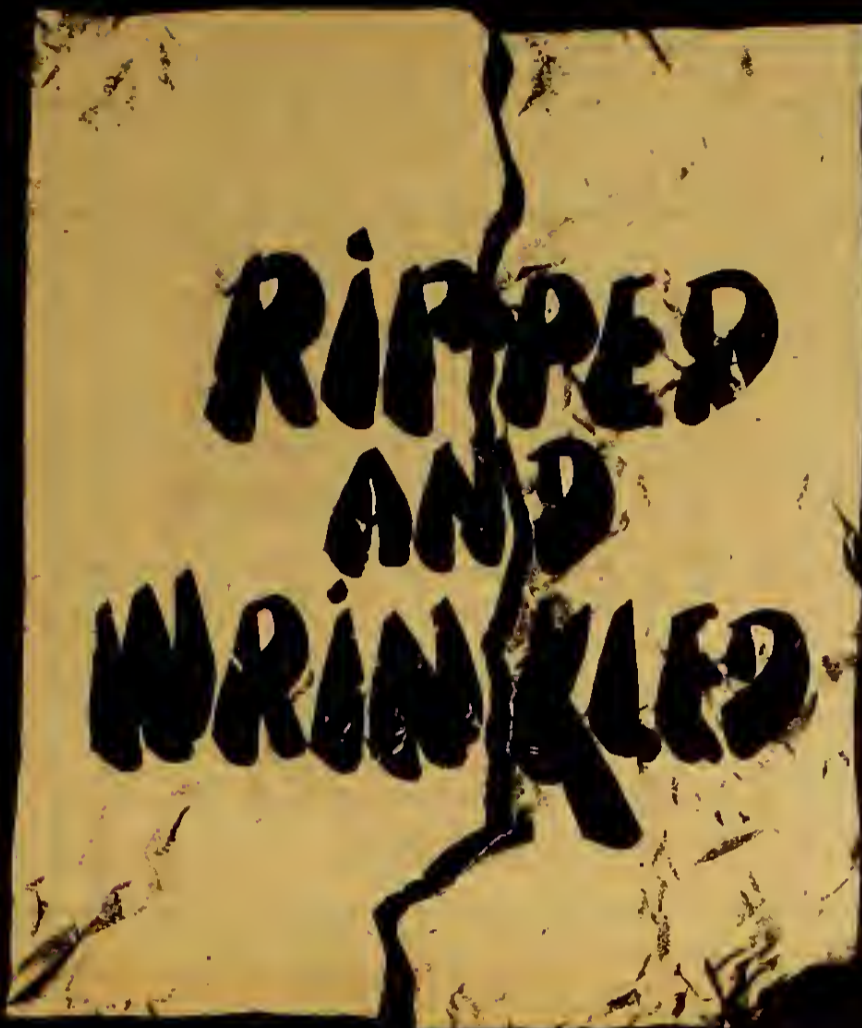
This new plate is quite different

from the first two, although the theme continues to be concerned with people who are victimized in some way by their circumstances in the society. This one is based on a Korean woman who lived in Houston, alone and without money except for a welfare check which for unknown reasons was suddenly cut off. In despair, she hanged herself from a tree in her yard.

The first two plates are based on the murders at Kent state, one of the plates specifically titled "Allison Krause", after a young woman who was killed there.

If you're interested in them, there's only one way to get them. Donate \$60 to Pacifica for each one. You'll also, of course, get the Radio Guide.

Southern Voice Presents  
**THE C.C. COURTNEY PRODUCTION**  
 written by C.C. and Jean Courtney



A Rock Opera • Bloontz All-Stars • 35 Original Songs  
 Thurs. 8: PM (\$2.50) • Fri. & Sat. 8 & 10:30 PM (\$3.50)  
 1610 Chenevert 225-6250  
**LIBERTY HALL**  
 Tickets at Foley's

FINE  
 PRINT

This is Volume III, No. 6 of the Pacifica folio, published as a free monthly service to the sponsoring listeners of KPFT/Houston. KPFT is owned and operated by the Pacifica Foundation, Inc., a non-profit institution also owning and operating non-commercial stations KPFA and KPFB in Berkeley-San Francisco, KPFK in Los Angeles, and WBAI in New York City.

KPFT broadcasts somewhere in the vicinity of 90.1 MHz with an effective radiated power of 48,000 watts from a secret transmitter site high atop Mt. Houston. Studios and offices are located at 618 Prairie, Houston 77002. All station departments may be reached by dialing 224-4000.

Our microphones are open to anyone with something to say. The ground rules are those of the FCC, good taste and good sense. At the time of this writing no requests for air time for commentary concerning issues in the public interest have been denied.

If you know of something we ought to broadcast, write or phone us about it. We have been known to respond by asking you to participate in or advise on the production of the material you suggest. In such cases, the station's materials, equipment and technicians are available without cost.

All gifts to KPFT, including subscriptions, are fully tax-deductible and the station is in the Internal Revenue Service's highest category of deductibility (public charity).

Program listings are as accurate as possible however we have been known to make changes and mistakes. Alterations will be announced over the air, unless we decide to throw up our hands and chuck the whole thing, in which case all programming will be preempted by the unnerving hiss of white noise.

STAFF

DAVID CROSSLEY  
 BILL FULLER  
 DARLA KLAUS  
 MARIE  
 BILL NARUM  
 JOHN PARKER, JR.  
 WALT SILVUS  
 DONNA STRALEY  
 MAYO THOMPSON  
 KIT VAN CLEAVE  
 PAUL YEAGER  
 MIKE ZEIGFINGER

LOCAL ADVISORY  
 BOARD

JODY BLAZEK  
 VERNON CHAMBERS  
 RALPH CONANT  
 BOB FOWLER  
 SCOTT GREGORY  
 DAVID T. LOPEZ  
 THELMA MELTZER  
 PETE SCHLUMBERGER  
 JOE TITA  
 DICK TRASK

NATIONAL BOARD

R. GORDON AGNEW  
 JODY BLAZEK  
 HENRY M. ELSON  
 GEORGE FOX  
 CAROLYN GOODMAN  
 HALLOCK HOFFMAN  
 RUDY HURWICH  
 HANNAH LEVIN  
 DAVID T. LOPEZ  
 THELMA MELTZER  
 MAX PALEVSKY  
 ROBERT POWSNER  
 JONAS ROSENFELD, JR.  
 ALBERT RUBEN  
 FRANK S. WYLE

# The Faceless Voices Behind the Microphones

MIKE AUGUST  
 AXIS  
 ROBERT BAKHAUS  
 BOB BABIN  
 LISELOTTE BABIN  
 JOHN BICKERS  
 BERNIE BLAZEK  
 JODY BLAZEK  
 JOE BLEAKIE  
 ERIC BONE  
 ART BRADY  
 JACK BRIECE  
 GLEN BROOKS  
 MADGELEAN BUSH  
 LYN BUTLER  
 CARLOS CALBILLO  
 MARK CAPLAN  
 GARY CHASON  
 GARY COLLIER  
 DON CONNER  
 PHIL COSGROVE  
 CANDI COSTIS  
 RAE LAKE COSTAS  
 DAVID COURTNEY  
 JEAN CROCE  
 SALMON CROKETTE  
 DZON CROUCHETT  
 PHIL DAVIS  
 DOUG DE LONG  
 DEVILS WALL  
 THORNE DREYER

PAT DOWELL  
 JON DOYLE  
 MARALYN DOYLE  
 BOBBY EAKIN  
 GLENN ENGLISH  
 WANDA ERICKSON  
 CARL ERWIN  
 E. Z. BOY  
 GREGG FLEISHMAN  
 ERNIE FLIPPO  
 BOB FOWLER  
 DOUG FRIEDENBURG  
 JOHN GALLARDO  
 JOANNE GAVIN  
 CHUCK GIMNICH  
 JIM GRAHAM  
 SCOTT GREGORY  
 ANN GROSS  
 EILEEN HATCHER  
 MIKE HATEM  
 RAY HEINRICH  
 PICKLED HERRING  
 ALAN HOFFMAN  
 H. H. HOLLIS  
 MELVIN HUCKABY  
 ED HUDDALL  
 KATHY HUDDALL  
 DANE INCE  
 CHARLES JACKSON  
 BARB JONES  
 BOB KAINER

JAYANT KIRTANE  
 DWAYNE KLAUS  
 ANIL KUMAR  
 IVAN KUPER  
 ROGER LA FOLLETTE  
 DAVE LARSON  
 MICHAEL LAWTON  
 JANICE LINDLEY  
 ABBIE LIPSCHUTZ  
 ISABELL LIPSCHUTZ  
 JOHN M. LOMAX  
 MAD DOG LUBOWSKY  
 ANNE MC CORD  
 DENNY MAHER  
 ROSA MARTA  
 SOL MELTZER  
 THELMA MELTZER  
 NANCY MELTZER  
 MELINDA MELTZER  
 JULIA MENDINA  
 GREG MERMEL  
 DOUG MILBURN  
 RUTH MILBURN  
 BOB MITCHELL  
 BETH MOFFETT  
 LYNNE NARUM  
 KAREN NORHTCOTT  
 CHRIS NULPH  
 JIM OHMART  
 TERRY O'LEARY  
 JENIFER PALMER

LAURA PALMER  
 JANIS PARKS  
 ROBERT PARRAMORE  
 DOC RIDDICK  
 LYNDA ROBISON  
 SAM ROGERS  
 DANNY SAMUELS  
 DON SANDERS  
 MARK SHAPIRO  
 MICHAEL SMITH  
 STEVENSON  
 RAY STEVENSON  
 CHARLES "SCOOP"  
 SWEENEY  
 JEAN SWEENEY  
 TARANTULA  
 ZAFAR TAQVI  
 LIONEL TAYLOR  
 BEN TEAGUE  
 FRAN TEAGUE  
 GARY THIER  
 NORMA TREVINO  
 RAMON TREVINO  
 KILGORE TROUT  
 TONY ULLRICH  
 DAVID WALDO  
 WALTON WALKER  
 SONNY WELLS  
 KEVIN WILLIS  
 RONNIE WRIGHT  
 MIKE ZUNK

## Nude body Found in Elevator

It seems to be that time of year when the general type of programming has to change radically. So far we've noticed that overall program concepts last about six months before the people who listen and work on them get antsy and eager for change. If you've been listening closely, you might be aware that for some months we've been doing increasingly dense programming, meaning everything gets tighter and tighter, everything is more carefully planned, and — unfortunately — interchange between listeners and Pacifica has become limited. If you listened in July, you heard an on-the-air revolution, not against anybody, just a general desire to talk to people and to hear what you have to say. If you've been infuriated because some scheduled programs have failed to come on recently, please let us know what they were and we'll make a point of playing them in the next couple of months.

For August, you'll find some major changes between 11 am. and 11 pm. each day. No programs have been eliminated, and some have been added. But there has been change in lengths and frequency of certain programs and you'll find a major new daytime program called Lunch as well as an important evening experiment called The Evening Program.

Lunch will be a mixed group effort between 11 in the morning and 2 in the afternoon daily. Marie Blazek, Bill Fuller and Dave Crossley will be putting it together with a lot of help from their friends. There'll be short 10-minute plays and documentaries, conversation, news, guests and a regular feature called On the Corner, in which Bill Fuller will go down to the street every day at 12:30 to talk to people out to lunch. At one he'll come back up and we'll open up the phones to listeners to enable you to get in on whatever conversation has been going on.

The Evening Program will be vaguely similar except that it will build up into an energy rush that will be released when the program melds into the Free Music Store. So far, Thorne Dreyer (of Briar Patch fame) and Lynn and Bill Narum (of Roll Over Marconi fame) will be the central forces. It's our hope that this highly mixed, mostly live evening show on Thursday nights will develop into a twice-a-week affair.

Some programs which have been blossoming recently are the Free Music Store, Roll Over Marconi, The Captive Unicorn and Gulf Coast Access. We hope people will come down to the station in increasing numbers for Marconi and the Music Store, both featuring live music.

Tuesday night has now become a slugfest with 4-1/4 hours of action-packed opinion and controversy. The entire evening is live and it's hoped all the people who do those programs will begin to drift around and argue with each other as each realizes he or she precedes or follows somebody who probably doesn't agree with them. At some time, we might ask all those people to take one night and do the whole night together, in one fantastic orgasmic four-hour brawl.

Another change is the moving of A Woman's Forum from every other Thursday night to every other Monday night. We've also tried to schedule



# BAMBAKO UNLIMITED

**LOVE SEATS**  
49.95 REG. 79.95

**BAMBOO CURTAINS**  
REG. 19.95 8.95

FOR POSTERS · BLACKLIGHTS · PILLOWS · INCENSE ·  
CANDLES · FISH NETS · ROCKS · HERBS & TEAS...

**BEAN BAG FURNITURE** FROM 19.95 **FREE STASH BAG WITH ANY CHAIR**

SMILE PILLOWS ONLY 99¢

7527 S. PARK · 649-9764 **14.95**  
BETWEEN KMART & SEARS

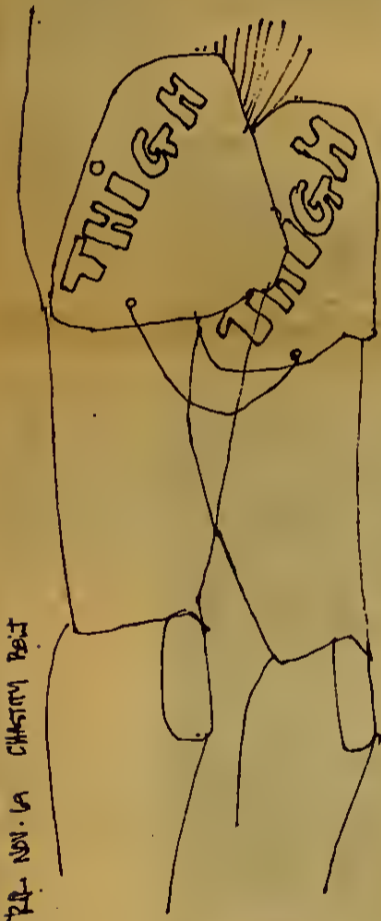
programs of particular interest to women on the same nights, and of course Yankee Doodle, the male liberation program is on that night too.

A new program is NeWomeNews, put together by Marie Blazek on Wednesdays at 7 pm. Call in.

Two half-hour news programs have been removed from Friday nights and will now be on Sunday evenings. Southeast Asia News Summary and Das Kapitoll, now 6 and 6:30 respectively, Sundays.

Speaking of news, you might notice that Live On Earth, Pacifica's famed news program, is now 30 minutes long, instead of the usual hour or so. The reason: both Super Scoop Sweeney and the Internationally Famous Donna Straley of Miami Beach reknown are going out of their minds to bring the news to the station as it happens. They want to break down the structure and do guerrilla news, live, from all over, throughout the day. For those who just can't be glued to their radios all day, the dynamic duo will put together a half-hour summary at six, as usual. Volunteers to help with the news are, as always, desperately needed.

Have a look at the highlights, check the overall chart, look at the listings, listen, and let us know what you think. 224-4000.



## WOMEN

This is a true story.  
This woman was walking down the street alone at night when a man came up from behind and grabbed her in a chokehold. Now this woman had been taking Karate for only six weeks but she elbowed him in the solar plexus and up into the chin turned around and kicked him in the balls and knocked him flat on his back. Whereupon he looked up at her from his prone position on the sidewalk and said:  
"Wow are you UPTIGHT!"  
— a poem by Judy Ghinger printed in LIBERA

The phenomenon of women "fighting back", that is, objecting to and refusing to take part in their own victimization, comes as a surprise to those who have yet to recognized the

pervasive injustices of sex discrimination. It's easy to read that poem and understand the irony — her assailant thinks she's uptight — but that situation is repeated in the more familiar, but perhaps less obvious, phenomenon of feminist hostility. How often have the media told us about those hostile, frustrated women in the feminist movement, and if you are a feminist, you've probably been asked at least once why you hate men. I'm always amazed that no one ever thinks to ask men who willingly participate in a sexist society what they have against women; I am equally amazed that people can still think of a sexist society as some kind of dormant evil, rather than a real, actual, aggressive attacker, assailing the well-being, in fact the existence, of its victims (and they aren't all female, by any means). When people don't see this, a movement that seeks to change so very much as feminism does, appears threatening. Consequently those who seek such changes can be construed as attackers themselves: "Wow are you UPTIGHT!" Uptight because you expect me to behave in a manner becoming a female (your idea of a female). Or because it's taken fifty (50) years to pass a constitutional amendment prohibiting sex discrimination, and some states still refuse to ratify it. Or because I just found out that 70 to 80% of those patients undergoing psychosurgery are female. Yes, I get uptight, but I wouldn't say I was hostile to men. I'd say this society was pretty hostile to my continued independent existence. But of course the projection of hostility onto the feminist movement has another root than fear. A woman in the feminist movement is not only an advocate of radical changes in our personal attitudes (a little closer to home than equal pay may seem to be), but she is also one of those people for whom self-assertive behavior is absolutely prohibited (women). Hence the masculine (and neurotic) myth of Hollywood — the woman executive (the Joan Crawford mystique) — if you are a woman outspoken in her own behalf, you have to pay; in Joan Crawford's case it was always an unhappy marriage or none at all (after all, a woman can't live without love). It is but a little way from this image to Esquire's composite image of the typical feminist, a figure with a scowl on her face; it calls to mind those fervent denunciations of the unladylike suffragettes. A good many rather nervous anti-feminists act as though they have everything to lose by reconsidering their own sexual bias; they see hostility in every disagreement or an attack in every attempt at change. And these days feminists bring change with them into every American institution (where they can get in), including those who pride themselves on their liberal intentions, because no institution will escape radical change if we stop typecasting personality according to sex. But I don't see that feminists can hold themselves accountable for the reluctance of outmoded attitudes to disappear; bow, for instance, can I be considered hostile for not conforming to your expectations of female behavior, or — to reciprocate — how could I blame you for not behaving in the fashion I expect of males? So it goes, that a man who reacts angrily to feminism can be horrified by feminist hostility, without ever considering the constant pressure on a woman who is beginning to question her role in this society. And this pressure makes for anger too, finally, because it isn't easy to understand how men and women fear a movement from which we might all emerge with greater dignity and independence and opportunity than any of us have now.

—Pat Dowell

WELCH AV. GRANT - 1 - BLK. EAST OF MONTROSS  
**RETAIL RESTAURANT**  
**ANDERSON FAIR**  
 IN THE NEIGHBORHOOD OF  
**ANDERSON FAIR**  
 AND READING ROOM  
**MEMORIAL LIBRARY**  
**OSCAR ANDERSON**  
 VISIT THE NEW

2910 Hillcroft 782-0231  
 5712 Kirby Dr. 667-0897  
 Downtown 1011 Milam 227-3106  
 3802 Yoakum at W. Alabama 524-5721

**theHobbitHole**  
 • SMOOTHIES • SANDWICHES • SALADS • MUNCHIES •  
 1715 SHEPHERD HOME MADE ICE CREAM (WEEK ENDS ONLY)  
 • HEALTH FOOD STORE OPENING UPSTAIRS •

**Craft Industries**  
 2707 Whitney  
 Off Westheimer  
 Specializing In:  
 Traditional Oriental Art  
 Supplies  
 Pottery Supplies  
 Also Pottery - Folk Crafts  
 Eskimo - Indian Work  
 523-9518

**art**  
**SUPPLY**  
 915 RICHMOND AVE.  
 HOUSTON, TEXAS 77006  
 526-2691

PACIFICA PRESENTS

# PETE SEEGER



## Benefit SEPT. 24 Concert

ALL SEATS RESERVED ON A FIRST COME FIRST SERVED BASIS : FREE TICKETS WITH NEW SUBSCRIPTIONS &  
FOR RENEWALS • ALL OTHERS \$3 • CALL 224-9000 FOR INFORMATION • ASK FOR WALT OR DARLA.

# Technological Bases for Social Change

By Harvey Wheeler

*The following is a paper presented at the Conference on Cultural Change, sponsored by The Center for the Study of Democratic Institutions, held in New York in May 1972. Mr. Wheeler is a Senior Fellow of the Center. He is the author of Democracy in a Revolutionary Era, Politics of Revolution, and (with Eugene Burdick) the novel Fail Safe, Reprinted by permission.*

When the literary person speaks of cultural change he often means major changes in the fine arts, using descriptive words such as classicism, romanticism, baroque, and the like. For the social scientist cultural change means major shifts in social institutions and belief systems and he uses descriptive words such as capitalism, the technological imperative, the post-industrial era, and the counter-culture. It is the latter meaning of cultural change that is used in what follows.

Along with most commentators here and in Europe I assume that Western culture is undergoing profound change. I cannot say with confidence precisely what this change is but I assume that it is strongly influenced by the contemporary scientific revolution. By this I mean three things: the biological revolution with its promise of expanding longevity, the computer revolution and its associated mathematical imperatives, and finally the revolution in the behavioral sciences symbolized by such developments as Operant Conditioning. These three illustrate the technological side of cultural change. Cultural change is influenced not only by technology but also by ideology — by developments in belief systems — my concern here, however, is to give primary attention to the technological aspects of cultural change.

First, a few general comments. Today we are entering what everyone tells us is the post-industrial era. We also hear it called the era of the scientific revolution. We also are given to understand that this new era will be dominated by the biological sciences: that biology will take over from physics. Our previous view of the world was one dominated by physics. We saw all of nature in its terms. Everything was matter. Even life was matter that happened to possess animation. Tomorrow, it is said, all this will change. Our view of the world will be dominated by biological idioms. Matter will be seen as part of the chain of life and will be interpreted in organic, homeostatic or other biological metaphors. So the first point is that our over-all way of thinking and of interpreting the world will shift from the idiom of matter to that of life, from mechanics to organic processes. In philosophy, I suppose this means thinking in terms associated with men like Whitehead and Teilhard de Chardin rather than Newton and Locke.

A second characteristic of the scientific revolution is said to be that there will occur a reversal of the relationships that have existed traditionally between theory and practice. The world of the Industrial Revolution was dominated by practical considerations. The world of the scientific revolution, so we are told, will be dominated by theoretical considerations. Hence, we are to expect the traditional relationships between theory and practice to change, with theory acquiring increasing dominance. Associated with this will come a change in the traditional relationships between theoreticians and practitioners.

In the past, as Churchill said, the scientist was to be on tap rather than on top. In the future, as Lord Zuckerman has pointed out, the scientist increasingly must be on top. This is not to suggest that there will be a new ruling elite composed solely of scientists but merely that scientists, among others, will often rise to very responsible positions of social leadership and that the principles of guiding human affairs will often be drawn from science. As this happens the role of scientific innovation will assume increasing prominence. This is not to suggest that science will dominate. Certainly it is not to suggest that capital will subside in importance. However, it is already true that if one could control the general character of scientific advance for the next few decades, by virtue of that fact, one could control the general framework within which social transition would take place. For example, to choose to put scientific research funds into space travel research as opposed to the life sciences would make a considerable difference in the nature of the social system that would result. In this sense, control over the flow of scientific innovation will rival, if not supplant, the importance of controlling the flow of capital.

This leads to a further consideration. The Industrial Revolution was the heyday of the inventor: the Edisons, the

McCormicks, and Alexander Graham Bells. The inventor, along with the industrial magnate, was the innovator. Today, of course, the time of the single inventor is past. This is the time of the scientific innovator and the scientific innovation of our day is quite different from the industrial invention of the past.

Compare the inventions of the industrial period with those we now think may be coming soon. Past inventions were typically devices for enhancing the separate capacities of the human body. They made the hand more effective with machine tools; they allowed man to travel faster with mechanized vehicles; they allowed man to process more textiles with weaving and sewing machines, to farm more effectively with reapers and threshers, to fabricate faster with factory machines. These were inventions that enhanced the eye, the ear, the hand, the leg, and so on. They were componential inventions; inventions enhancing the components of the body. It followed that they were inventions with a mass market potential. That is, because they extended the capacity of each part of the human body, every living man was a potential purchaser for every invention; the inventions of the industrial era were mass market inventions.

The era characterized by this kind of inventiveness came to an end with the end of World War II. With very few exceptions — the tape recorder is possibly one — there have been no mass market inventions since that time. This does not mean that there have not been developments — primarily in what we call gadgetry — pop-up toasters, electric tooth brushes, electric razors, synthetic fibers (nylon was invented before World War II), transistor radios, television. But these were developments or improvements of products and processes that had been invented previously.

Great advances in quantitative production and distribution were made, but all this expansion of consumerism so spectacular a feature of the past thirty years has been founded on inventions and processes that were developed long previously. In fact, when one compares the past thirty years with any other previous period of the industrial era it stands out by virtue of its inventive barrenness.

True, there have been major innovations, of a new type, and I shall return to these shortly. For with the spectacular exception of the birth-control pill, none of these innovations has found a mass market in the old sense.

The computer is a post-war innovation but it has yet to find its mass market, and this is the point. Compare the other innovations that come to mind. The atomic bomb came out of the war but just at its end; atomic energy was post-war. It will have mass implications when thermonuclear energy reaches the masses. But thermonuclear energy is not something with its own mass market. Soon we expect the biological revolution to come to maturation with the synthesis and then the prolongation of life. If we consider these three post-war scientific innovations together, we see that they are qualitatively different from the inventions that characterized the industrial world in the past. The inventions of the past were partial things that expanded the capacities of the body. The inventions, the scientific discoveries — we should really talk about discoveries now instead of inventions — which we have experienced since World War II are systemic inventions and discoveries. They are inventions that do not deal with parts of the world or the person, but with the entire system: inventions of energy: thermonuclear power, of thought (the computer), and of life (the biological revolution). The capacity to deal with inventions of the old kind was difficult enough to acquire. But our capacity for dealing with this new order of systemic inventions and discoveries is almost completely inadequate.

Our politics is certainly inadequate, our politics was itself an invention. We are living with the representative and legislative institutions of the Industrial Revolution. They were bright and fresh young inventions in the eighteenth century. They were invented to deal with the kinds of problems and innovations and discoveries that were coming along in those days. They were relatively well designed for coping with such problems. But what do you do in the political order when your discoveries are all systemic: when their implications reach to the entire system of life, the entire system of the environment? How do you process, how do you deliberate, how do you deal with a world in which innovations are of this order?

My proposition is that our political institutions and even human beings today are obsolete from the standpoint of understanding a world whose innovations are systemic rather than componential. Let me put this another way: scientific

knowledge, as we know, is cumulative, additive; each scientist stands upon the shoulders of those who went before him and sees a little bit farther beyond the horizon. Each builds upon everything that others left behind — scientific knowledge is cumulative. But political knowledge — this includes political wisdom, wisdom in general, and ethical or philosophical knowledge — requires a different capacity. When we are thinking of the human being's capacity to deal with the world and to understand and cope with it, we are talking about ethical, philosophical, and political wisdom. Unfortunately, this kind of knowledge is not cumulative. Each one of us, as he goes through life, is pretty much in the same condition as were Plato and Aristotle, or Kant and Whitehead. In some sense we have to begin the history of philosophy and ethics over again with each child as it matures. There are certain ways in which we can make wisdom accumulative. One is through institutions. We claim that one function of institutions is to preserve congealed wisdom. But even these we must test for ourselves, so in any case it is necessary for us to assimilate individually in our life-times what wisdom there is and what wisdom we must have for the resolution of our pressing social and economic problems. Now I am suggesting it as an observable fact that the gap between the accumulation of scientific knowledge and technological competence with the additive capacity that it has, compared with the non-additive nature of philosophic, political, and deliberative wisdom, has become so great that the human being is now obsolete from a functional standpoint. We are simply unable to deal with the complexity of the problems that surround us.

This is a dramatic proposition, but how can one know whether or not to believe it? On what basis can one believe such a proposition? There is no way because if there is a problem we cannot comprehend, it is a problem we cannot recognize, for one of the maxims about problem-solving is that as soon as we can recognize a problem we are at least partly on the way toward solving it. I am suggesting we are in a condition in which most of our serious problems are ones we don't even recognize.

The French physicist Pierre Auger makes this point by using the analogy of the monkey. The chimpanzee is a very bright animal. One can place food outside his cage and then give him a disjointed piece of equipment separated in three segments. Being very clever, he perceives that he can stick them together and rake the food inside his cage. When he sees the three pieces, the three joints, he sees in them a possible rake, so he makes them into a rake. Now make it more complicated. Give him a four-jointed stick. He still sees a rake and still assembles it to get his food. But at some point, five or six joints, he fails to see a rake in the pieces offered him and no longer puts them together and no longer brings in the food and is threatened with starvation. He faces a crisis, a crisis that is characterized by oscillation, as most crises are. That is, instead of seeing a possible rake in six pieces, he sees merely six things to play with. He begins engaging in repetitive behavior, and repetitive behavior — random repetitive behavior, oscillation — is one of the signs of an insoluble problem or a problem whose existence is not even observed. So one of the indices we would have as human beings of the presence of problems we don't even see would be the secondary presence of random, oscillatory, pointless, repetitive behavior, on the part of human beings: oscillation in the social order of a high degree.

I submit that as we look around us today it does seem that there is a great deal of randomness, oscillation and repetitive behavior with regard to our social problems. This is the functional condition we are in. This was one of the propositions Max Born made a few years back in pondering the difficulties that have come because of the unforeseen consequences of thermonuclear energy.

John Wilkinson, a mathematician at the Center, estimates that the complexity of the social and political problems confronting us today is of such an order that an IQ of 140 is required to understand and cope with them. If that is the case, the prospect for democracy is very dim. If he is right, we are fated for a future dominated by an elite of intellectuals, unless scientists throughout the world can help us, for they do offer a possible way out if they can extend the maturation period of life. If we can use this expanded maturation period to address ourselves to our most pressing problems, namely our political and social problems in what Robert Hutchins calls a society that he would like to be a Learning Society, we might have a chance. This would be a society in which men devote their energies not so much to their subsistence functions but to their civic functions, dealing with these really hard problems of maintaining the cultural order; a life-long dedication and an expanded life-long dedication. It is quite possible, theoretically possible, for us in this way to close the gap between the additive and accumulative nature of scientific knowledge and the non-additive, non-accumulative nature of practical wisdom, of philosophic knowledge, and of political and deliberative powers. So this is why I conclude that the biological revolution, and with it expanded longevity, is not inevitable, it is only necessary.

There are many other implications of the biological revolution relevant to social change. These have been commented upon at length in popular books and journals. I shall comment upon one facet that may be of some importance for more general cultural trends.

In the first place we know that the expansion of longevity will increase the proportion of the population in the older age brackets. This, of course, will add further to the population pressures already observable. It will increase the demand for the limitation of births and we can expect the present clamor for a zero population birth rate to be succeeded by a demand for a negative population birth rate; possibly a demand for the virtual prohibition of childbirth. This will carry many implications, some of them economic — it will change the entire structure of our market demand system and it will add to the pressures for a zero economic growth rate.

There will be political implications. Over half the total population will be elderly. Never before in human history has there been such a population. There have been many societies in which the elders assumed prominent roles. But gerontocracy always occurred under conditions in which the elderly made up a very small percentage of the over-all population. What we are now led to expect is a situation in which the population as a whole will be largely composed of adults, most of them quite old. This implies all sorts of changes for styles and value systems. For example, what will happen to our conceptions of physical beauty? Now these are dominated by the conceptions of youth. The Vienna philosopher, Friedrich Heer, suggests that the change will occur in the following way. Youth is a time of immaturity. It has its charm, but also its indistinctness. All youth melts into a general melange in which individuals are poorly distinguished from one another, as is the case with a grove of sapling trees. Only with age does true individuality appear and only with true individuality is true beauty possible. Today we look at a landscape showing a hillside, trees, a stream, shrubs — like a scene from Poussin, let us say. Is it one in which everything is freshly planted — as in the fields of a tree nursery? No, our impressions of its beauty derive in part, at least, from the fact that it is old, settled, established, expressing a certain character and personality. The same is true of the face and figure of an elderly person. We are now so accustomed to identifying age with ugliness and wrinkles with revulsion that we have forgotten the beauty many great painters have found in the elderly. Soon our criteria of beauty may, as with certain of the great masters, be based upon age-centered rather than youth-centered models. Then we will regard life itself — the human lifespan — as a work of art; as a painting whose true nature cannot be known until it acquires its mature consummation. Youth may even come to be associated with some of the revulsion now associated with age. One consequence may be a new development in the field of cosmetics in which special preparations capable of simulating age will supplant those whose function now is to simulate youth. In short, we may see a social system in which the values associated with age, maturity, and tranquility supplant those now associated with youth, impetuosity, and unrealized potential.

One final comment on the biological revolution. We are accustomed to criticizing the present preoccupation with gadgetry associated with the consumer society. This revulsion against the excesses of rampant technology carry over into a disenchantment with science. Science, especially establishmentarian science, is anathematized along with General Motors and General Dynamics. It is often concluded that this revulsion against science may characterize the future. However, there is some reason for doubting that this will happen, especially after the biological revolution has come of age. Biology is not as suspect as is physics. For one thing, biology is the science that brings us ecology, and ecological balance together with environmental protection must provide themes for the future. Moreover, we can expect to see the present demand for general environmental protections to carry over into a concern for individual somatic — and psychomatic — balances. This is already present, perhaps most stridently among those now in their thirties, but it is spreading through the older segments of the population as well. The natural food craze and the vitamin fad is part of this general demand.

As the biological revolution matures, it will bring with it more and more naturalizing, harmonizing, and homeostatic drugs. Hence, we may expect a new form of gadgetry to appear: biological gadgetry. There will be an increased scramble to consume pills for everything from impotence to stupidity, the way we now rush for machines and gadgets for everything. From this standpoint it is possible that the present disenchantment with science is a passing phenomenon and that a celebration of science — particularly biological science — will supplant the present derogation as soon as it succeeds in bringing us effective biochemical gadgets. Paradoxically, it may well be the very people who now lead the fight against science — the science related to material gadgets — who will most effusively herald the new biological science.



# HIGHLIGHTS



AUGUST FIRST IS ALIVE AND SWELL is a 12-hour special under the fearful direction of Bill Fuller and Dave Crossley. The first rule: no record players or tape recorders. Twelve hours of live music, street fights, strange remote

broadcasts and spontaneous fol-de-rol. Got ideas? Call up. Play the nose flute? Come on down. We're hoping for a monster afternoon jam starting about 5, looking for a big group of itinerant musicians who are willing to sit down and try to play

together as strangers in a familiar land. Call Paul Yeager, Fuller or Crossley, 224-4000. Audience essential from that time on through the evening. Underway at 11 a.m., theoretically stopping at 11 p.m., but Pacifica parties don't stop all that easily.

Mid-day relief is just a swallow away! LUNCH begins Aug. 2 and continues daily from 11 - 2. Three hours of short and amazing bits of information and entertainment, starting off with some conversation, perhaps a ten-minute play, brief documentary, some music, some nonsense, observations about men and women and other such comic characters, and then, about noon, conversational news by the most inept group of newshounds since TV began. And then the big moment, when, at 12:30, Bill Fuller steps gingerly to the street with a live microphone and asks everybody he sees

what the hell is going on. At one, Bill will return upstairs and we'll throw open the phones and invite you to summarize the world's condition each day. TURNS will feature a discussion of the food stamp program and how it functions on its first few shows in August. The Southern Christian Leadership Conference will present a program chaired by the Reverend William A. Lawson, Chairman of the local chapter of SCLC. This will probably be a very controversial program, and so the phones will be opened, at 10:30 Tuesday nights, following a long evening of

socially-oriented programming beginning with Radio Free Aztlan 7-8, followed by LEGALESE produced under the auspices of the Houston Bar Association 8-8:30, then NEW DIRECTIONS for prisoners, and exes, 8:30 to 9, then HEALTH TO THE PEOPLE with Dr. Melvin Huckaby and members of the Houston District Dental Society debating the Charles George Dental Society about the need for dental benefits for welfare recipients. At 10:pm Bob Mitchell says RIGHT FACE: Conservatism is the Politics of Reality. Tuesdays have gotten dense, but maybe one Tuesday they'll

all be in the same room at the same time, and two speakers won't be enough to hear what's going on—you'll just have to come down.

The NeWomeNews will air for an hour at 7:pm Wednesday evenings. It will feature 20 to 30 minutes of international, national and local coverage of women's activities, a calendar of events, and will be followed by discussions, interpretations, live interviews, phone calls and whatever else happens. Houstonians with news items or events to be publicized should contact

Marie Blazek, Pat Dowell or Ruth Milburn, or come down.

PEDALLING IT - a program all about bicycles: How to get one or keep yours from getting got; how to maintain it and make emergency repairs, cross country riding and racing, discussion of bicycle laws, plus information on bike groups in Houston, phone in time for your unanswered questions and a discussion of the female-auto-eroticism-bicycle-seat phenomenon. Produced at KPFT by Eileen Hatcher and Joy Boone, with emergency repairs by Jim Ohmart. Wednesday,

August 2nd, 8:pm and Wednesday, August 9, 9:am.

THE EVENING PROGRAM, an ambitious four-hour mix of conversation, short documentaries, plays, argument, poetry, information and live music (incorporating the Free Music Store at about 10 o'clock) is an attempt to loosen up the nighttime and involve more listeners in the programs. The idea comes from a combination of Thorne Dreyer's early Briar Patch program and Bill and Lynne Narum's Roll Over Marconi. Thorne, Bill and Lynne will be working with half a dozen

others in a monster collective effort. Basic requirement: a studio audience. Please come down, Thursday evenings about 8.

Within THE EVENING PROGRAM, THE FREE MUSIC STORE has been expanded from one-act specials every other week, to a weekly double bill with at least nine groups or soloists scheduled for this month, from Bruiser Barton and the Dry Heaves to the Second Mt. Olive gospel singers. Musicians donate their efforts, so it's free for you. Come on down.

ROLL OVER MARCONI continues on Saturday nights to use the Free



THE REPUBLICAN NATIONAL CONVENTION, a serio-comic live and taped special based on last month's THE DEMOCRATIC NATIONAL CONVENTION begins Monday, August 21 at 8

p.m. Mad Dog Lubowsky, Scoop Sweeney and Gary Thiher star in this Pacifica Network production from Miami Beach. With action expected to be somewhat subdued within the hall, The Street People of The United States, in the guise of poor folks, Yuppies, Zip-

pies, gays, feminists, blacks, browns and Indians plan entertainment for the nation. Pacifica will be there. It costs 55 cents a minute, exclusive of airplane tickets, equipment, hotels, food and accessories. Please help pay for it. 224-4000.

Music Store concept of live groups with audiences. From 7 - 11 p.m. Saturdays.

There were two Fastest Subbers in the West during the May Marathon. Mark Lenoue and John White together persuaded 25 people to subscribe, and for that they get to program the air for 24 hours. They chose the first Saturday/Sunday in August from noon to noon, and so it be: 12:pm August 5 to 12:pm August 6.

On Monday August 7 at 8:30 pm, KPFT presents its First Annual TALENT SHOW. If you have a rare or peculiar talent, or an act you perform with someone

that can make sense to listeners only, please call us up and let us see and hear you. Liselotte Babin, who thought of the idea, will be assisted by Fred Pacifica as emcee, and everyone is invited.

With hearts in throats, Marie Blazek and Vickie Moreland set out last month to talk to truckers, on the road and in those roadmen's hangouts we all call truck stops. The resultant documentary, THE TRUCKER. WORKING CLASS HERO? might change a few misconceptions about these kings of the road—and unfortunately shore up some

popular ideas about their politics. Monday, Aug. 14 at 7 p.m. and again the following Wednesday at 3 p.m. Very special.

MONTROSE/1984 — what's happening here? A discussion of the area and where it's going with a panel consisting of residents, business owners, architects and others concerned and/or involved with the future of Montrose gathered to scare you into thinking about this historic, exploited, energetic, magnetic, semi-integrated, polluted, beautiful, crazy bastard child of mother downtown. Wednesday, August 30 at 8:pm.

## WEEK DAYS

	MONDAY	TUESDAY	WEDNESDAY	THURSDAY	FRIDAY
3:am	DESERT ISLAND				
6:00	MANDY IN THE MDRNING				
9:00	JUDDLIBET				
11:00	LUNCH				
2:00					
3:pm	JEAN SHEPHERO	BRIARPATCH		BRIARPATCH	PUBLIC AFFAIRS OPEN HOUR
4:00					
5:00	GETTING THERE IS HARDLY ANY FUN AT ALL JAZZ				
6:00	GULF COAST ACCESS				MOVIES AND TV
	LIFE ON EARTH				
	WAR FILE				INTERNATIONAL NEWS
7:00		R F A	NEWOMENEWS	R F A	DISDNEED ARTS
8:00		LEGALESE			
9:00		NEW DIRECTIONS		EVENING PROGRAM	FREE MUSIC
		HEALTH TO THE PEOPLE	INOIAN MUSIC AND CULTURE		H. H. HOLLIS
10:00	YANKEE DOODLE	RIGHT FACE	THE CAPTIVE UNICORN		
11:00		SCLC		FREE MUSIC STORE	FOR BLACKS ONLY
12:00	air waves				

# AUGUST 1972

TUESDAY

1

- 3:00 a.m. **DESERT ISLAND** - a wash of mixed sound waves
- 6:00 a.m. **MANDY IN THE MORNING** makes waking winsome, whimsical and often worthwhile
- 9:00 a.m. **QUOOLIBET** - "Classical" music from all ages
- 11:00 a.m. KPFT begins a new experiment -- 12 hours of broadcasting without turning on a taperecorder or a record-player. We will instead have people coming in to visit, the On-the-Air microphone will be on the streets, musicians and singers will perform live from Studios A and B, volunteers will be out in shopping centers, at Rampart St. Studios, in the park, calling in with live bits of what's happening as the day sweaters on into night. Come down and join us, or call us if something interesting is happening where you are, and by all means keep tuned to see what this experiment develops.
- 11:00 a.m. **AfR WAVES** - Sounds like the coo of the duffy bird.

WEDNESDAY

2

- 3:00 a.m. **DESERT ISLAND** - Irelandals pour Islanders
- 6:00 a.m. **MANOY IN THE MORNING** - Intermedial madness and happiness
- 9:00 a.m. **APRIL 18, 1906: 5:16 a.m.** -- That's when the San Francisco earthquake came,
- 10:00 a.m. **CITY COUNCIL** - citizens speak to our elected municipal officials, and it's often interesting to hear how they respond, when and if they do.
- 12:00 noon **LUNCH** begins when City Council ends, and at 12:30 or thereabouts Bill Fuller will go out on the corner with the On-Air microphone and see what's happening. He will be talking with whoever he can find on the streets, about whatever is foremost in the minds of men and women. This walk to and on the streets will be a daily feature of the LUNCH program, and will be followed by a time of Reactions from the general listening audience who can get on the air by telephone. If something's pleasing you or bothering you, call us up and let everyone hear about it.
- 2:00 p.m. **THE CAUCASIAN CHALK CIRCLE** by Bertolt Brecht - Performed by the Pomona College Theater under the direction of Andrew Doe, with music arranged by Morton Subotnick. The production was one of four winners of the Region II American College Theater Festival. The production was taped under studio conditions especially for KPFT, and was co-produced by Everett Frost and Bruce Gossard.
- 4:30 p.m. **GETTING THERE** - A jazz show for hard drivers
- 5:45 p.m. **GULF COAST ACCESS** - Information input and listener retrieval
- 6:00 p.m. **LIFE ON EARTH** - news summary
- 6:30 p.m. **WAR FILE** - the latest obscenities from the sunny fields of Southeast Asia
- 6:45 p.m. **COMMUNITY SPEAK OUT**
- 7:00 p.m. **NeWomeNews** - featuring 20 to 30 minutes of International, national and local coverage of

women's activities, a calendar of events, followed by discussions, interpretations, live interviews, phone calls, or whatever moves. Local women with news items or events to be publicized, contact Marie Blazek, Pat Dowell or Ruth Milburn, or come on down.

- 8:00 p.m. **PEOALLING IT** - See highlights
- 9:00 p.m. **INDIAN MUSIC AND CULTURE** - Anil Kumar discusses his country's ups and downs, and plays a little popular Indian music to season the sights.
- 10:00 p.m. **THE CAPTIVE UNICORN** - Kit Van Cleave catches glimpses of things rare and marvelous, and, bending closer, opens her hands slightly to present them to us.
- 11:00 p.m. **AIR WAVES** - Gavln Duffy

THURSDAY

3

- 3:00 a.m. **DESERT ISLAND** - world without end, Amen.
- 6:00 **MANOY IN MORNING** - music and voice for unrumpling the sheets, and the morning.
- 9:00 a.m. **QUOOLIBET** - Contemporary American Music with Bob Kainer, Mary Howe - "Stars" and "Sand" performed by the Vienna Orchestra, William Strickland conducting; Samuel Barber - "Souvenirs" performed by the London Symphony Orchestra, Jose Serebrier conducting.
- 11:00 a.m. **LUNCH** - get yer metal tray an stan in line! Shorts, bits, skits and hits from here, there and forever, music, people, with Marie Blazek, Bill Fuller and Dave Crossley. Bill goes out On the Corner at 12:30 to talk about everything with anybody, and comes back in at 1 p.m. to field phone calls. Come down and eat with us, or tune in at home, in your car at the Jack in the Box, wherever.
- 2:00 p.m. **WITCHCRAFT THROUGH THE AGES** - An archive program from Pacifica Program Services -- a survey course in finger tricks and better.
- 3:00 p.m. **THE BRIARPATCH** hatches at a new time.
- 4:30 p.m. **GETTING THERE** is a jazz show . . .  
Getting There is a music show . . .  
Getting there is a jazz show . . .

Getting There is a music show . . . Getting There is hardly any fun at all on the freeways, but what's on the air at 90.1 should help.

- 5:45 p.m. **GULF COAST ACCESS** - community information -- what's happening where and when
- 6:00 p.m. **LIFE ON EARTH** - news summary
- 6:30 p.m. **WAR FILE**
- 6:45 p.m. **COMMUNITY SPEAKS OUT**
- 7:00 p.m. **RAOIO FREE AZTLAN** - community, national and international news and information, folk and revolutionary music, tonight an open discussion of La Raza in higher education and the role of other community groups.
- 8:00 p.m. **THE EVENING PROGRAM** - see highlights
- 10:00 p.m. **FREE MUSIC STORE** - Frank Davis and the Rockin' Blue Diamonds used to play alternating sets at the Old Quarter until the Diamonds' equipment was stolen. Hopefully we can scrounge enough amplification for a bass and voices, and maybe we'll be in for one of the nicest acoustic sets we've ever had. Come down and join the party or listen at home.

- 12:00 p.m. **AIR WAVES** - with the toast of Texas Gavln Duffy

FRIDAY

4

- 3:00 a.m. **DESERT ISLAND** - all's fair in love and foreplay
- 6:00 a.m. **MANOY IN THE MORNING** will calm those eyes staring up at you from your breakfast plate.
- 9:00 a.m. **QUOOLIBET** today features Michael Lawton with Music for a While -- a conduction through Middle-Upper and Upper-Upper Classical
- 11:00 a.m. **LUNCH** comes every day, and we make it a three hour repast with bits of juice from the Newsgroup, from small productions, from live musicians, from Bill Fuller out On the Corner at 12:30 or so, and from you calling in your thoughts and reactions live over the telephone.
- 2:00 p.m. **HUMAN AGGRESSION -- NATURE OR NURTURE?** A program from the Pacifica Central Archives asking whether man is

naturally aggressive or is just getting his rocks off.

- 3:00 p.m. **PUBLIC AFFAIRS OPEN HOUR** - In-depth peering in depths of debt, death and dread, and once-sunny once-fields o'er-doomed and beetling -- If you think that's bad come down-town and take less than five deep breaths (more than five is contagiously harmful to your health).
- 4:00 p.m. **GETTIN THERE** with Ray Stevenson swinging up-time on the down-slide away from the 9 to 5.
- 5:30 p.m. **THIS WEEK'S MOVIES AND TV** are discussed by Pat Dowell who must have seen every film ever made, and can tell you with museful humor her reactions to what your opportunities are to begin to do the same.
- 6:00 p.m. **LIVE ON EARTH** - news summary
- 6:30 p.m. **INTERNATIONAL REVOLUTIONARY PEOPLES' PARTY NEWS** worded and read by Karen Northcott.
- 7:00 p.m. **WOROS TO THE WISE** - A Libertarian Perspective from Robert Backhaus. Once more a new time for this program -- we hope Libertarians and anti-Libertarians can continue to avail themselves of this program. If not please write and let us know.

- 7:30 p.m. **POISONEO ARTS** - The continuing Adventures of Charles and Emily Ann Andrews and cosmic Mr. Waburn as they re-thread treds of MiddleMania and wander over the wash atop the mythic Melting Pot.
- 8:00 p.m. **MORE FREE MUSIC** - This time will either be used to feature live musicians or to play airchecks of last night's Free Music Store or last Saturday's Roll Over Marconi or any intervening performance that happened to occur.
- 9:30 p.m. **H.H. HOLLIS** reads science-fiction, and it's usually quite strange.
- 10:00 p.m. **FOR BLACKS ONLY** - a jazz show for the whole family.

SATURDAY

5

- 1:00 a.m. **SPACE INVAOERS MAGIC THEATER FOR MAOMEN ONLY** - Picking at the bones of rock and roll with Joe Bleakie, Roger LaFollette and special guest loonies.
- 5:00 a.m. **MORNINGTOWN RIOE** along with Phil Cosgrove playing music for glistening dew and fractured consciousnesses re-crossing the threshold of Dream.
- 7:00 a.m. **INTERNATIONAL MUSICAL TROT WITH LISELOTT** - Let's go Dutch! Und aehnlicen Quatsch . . . a musical trip with Liselotte Babin.
- 9:00 a.m. **BLUE SKIES** - Walt Silvus will be playing music that "decent folks" can get up to. (There apparently was a rumor -- perhaps Walt started it -- that someone was going to be playing ROCK AND ROLL at this time, and so Walt stepped in at the last possible moment to save us from ?)
- 12:00 noon **THE FASTEST SUBBER IN THE WEST** - Mark Lenoue and John White won the right to pre-empt any 24 hours of programming by turning in more paying subscriptions during Marathon Charles than any other person or group of people. Their record was 25, and they wanted the 24 hours to go from noon to noon, Saturday to Sunday, and this is it. They will have a lot of their friends on, talking and playing music, and it should be reassuring to note that people who have only listened to the radio can make it talk.

SUNDAY

6

- 12:00 noon Mir, Zhivago (World-Peace,Life) International Folk music hosted by Joanne Gavin. Today: "Two Sides of New Zealand". The native people of New Zealand, the Maori, have a rich living musical culture, very melodic to western ears. The European New Zealanders brought several kinds of folk songs with them, mainly from the British Isles. Have they influenced one another? Listen with us to tapes from the New Zealand Broadcasting Corp. and see what you think.
- 1:00 p.m. OPERATION BREAD-BASKET - Michael Smith opens holes in your mind and opens the phones for you to get back at him.
- 2:00 p.m. AUTOPHYSIOPSYCHIC - A free music show for Sunday minds and bodies . . . constructed by Ronnie Wright.
- 6:00 p.m. SOUTHEAST ASIA NEWS SUMMARY - from the Southeast Asia Information Bureau. This program will alternate weekly with the Drafts and Military Rights program.
- 6:30 p.m. DAS KAPITOL - Pacifica Washington's examination of plate scrapings, shorts lint and tumor humors, from the Older Guys on the Hill.
- 7:00 p.m. HOUSTON CONCERT HOUSTON - Hopefully we'll be able to air something recorded in a live situation other than KPFT's studios, perhaps a club or bar. In any case, this hour will be reserved for original music from Houston musicians.
- 8:00 p.m. PLAY IT AGAIN, SAM - And this hour is reserved for the most requested program from last week. Tell Bill Fuller or leave a message for him noting your choice.
- 9:00 p.m. MAOOOG'S BITE - "Simply appalling . . ." -- Peter's Long Almanac. "Should have been left for the pea splitter . . ." -- Peck's Pepper
- 10:00 p.m. BARD AT LARGE - Rae Lake Costas and Doug Freidenberg continue to talk to esotericists from the world over.
- 11:00 p.m. OEJA VU - Anne McCord cranks up the old Victrola and is usually open to requests for mostly folk music.
- 3:00 a.m. DESERT ISLANO - home of sand-prints on your feet, wind marks on the sheet or streets, night moves and lights light upon morning.
- 6:00 a.m. MANOY IN THE MORNING - They call it Stormy Monday, but Tuesday's just as bad . . . If you let it be.
- 9:00 a.m. QUOOLIBET - Phil Cosgrove rolls in and wheezes bene manyan to classic muses of tone and form, pitch and calibre.
- 11:00 a.m. LUNCH - The GARAGE SALE has become a paleless pail of short productions of every description, music, verse and talk. At 12:30 Bill Fuller will track down to the street and talk to people on their ways to and from lunch about what's helping or hindering their digestion. At 1 p.m. he will return to Studio A to answer phone calls. What's on your mind?
- 2:00 p.m. MACBETH AND THE TEN-PIN MURDERS - An Adaptation of Wm. Shakespeare's MacBeth written and produced by Mad Dog Lubowsky. "The only proof that really shows us that Shakespeare was indeed our Belgian washerwomen . . ." -- Partisan review. "Daily News Macbeth seems to be the murderer until it is discovered he was attending a Kiwanis convention in Cleveland at the time of the murder." . . . boffo at megahurtz . . ." -- Sam Pequod, private oepiglottis
- 3:00 p.m. JEAN SHEPHARD - righteous humor
- 4:00 p.m. UNDER THE THUMB - repeated from Friday, July 28. The Economists of the MONDO PERVERTO staph present speculations on the per-inch cost of Nirvana and how you can reach satori with a few common objects around the house.

MONDAY

7

- 4:30 p.m. GETTING THERE IS HARDLY ANY FUN AT ALL. Jazz for cooling off in traffic jams.
- 5:45 p.m. GULF COAST ACCESS - Want to tell everyone something? Tell Jim Ohmart. Want to know interesting bits of info about what your neighbors are up to? Listen.
- 6:00 p.m. LIFE ON EARTH - news summary
- 6:30 p.m. WAR FILE
- 6:45 p.m. COMMUNITY SPEAK OUT
- 7:00 p.m. A WOMAN'S FORUM - Ruth Milburn and Pat Dowell co-ordinate news of the feminist movement, publications, a feminist perspective on politics and the arts. Discussions on topics of specific interest to women are a two-way project - call us at 224-4000.
- 8:30 p.m. TALENT SHOW - Liselotte Babin and perhaps Fred Pacifica will host this entourage of performers rare and diverse. Do you have a secret talent that you've quietly nurtured over the years, and that should finally come to the light of public knowledge and appreciation? Please come down and be on the show, before an enthusiastic audience in the studio. Whistlers to the right, spoons to the left, trained dogs through flaming hoops stand clear, songs, games with the audience are encouraged, flea circuses please keep to the rear. Tune up your nose flute, bring your rack of bottle chimes, washboards and knuckle-crackers. They work better on radio than mime. Entries accepted up to the last minute -- call Liselotte Babin or Fred Pacifica or leave a message with Paul Yeager.
- 10:00 p.m. YANKEE OOOOLE
- 11:00 p.m. BLUE MONOAY - Gavin Crusty

TUESDAY

8

- 3:00 a.m. OESERT ISLANO - gnomical holes in the night, in thousands of sleeping eardrums, Kilgore, Trout and Rosencrantz invest hairs both wild and cultured.
- 6:00 a.m. MANOY IN THE MORNING
- 9:00 a.m. QUOOLIBET - Contemporary music with Phil Cosgrove and Bob Kainer
- 11:00 a.m. LUNCH in the country is better than fetters.
- 12:30 p.m. ON THE CORNER with Bill Fuller talking with whatever's down there with him.
- 1:00 p.m. REACTIONS from the telephone.
- 2:00 p.m. OISINHERITEO ANO OISPOSSESEO - This program examines the continuing struggle of the Pit River Indians of Shasta County to regain their lands from the Federal Government and such large corporations as P.G.&E. -- lands which have been lost as a result of wars, massacres, fraud, occupation, deprivation of water, flooding and forced sale. It includes interview with Mickey Gimmell, former tribal chairman, Ross Wm. Montgomery, chairman of the Pit River Nation. Produced by Jan Legnitto at KPFA.
- 3:00 p.m. THE BRIARPATCH - Tiptoe through.
- 4:30 p.m. GETTING THERE IS HARDLY ANY FUN AT ALL and even though we've passed the summer solstice the days are still getting hotter.
- 5:00 p.m. GULF COAST ACCESS

- 6:00 p.m. LIFE ON EARTH - news
- 6:30 p.m. WAR FILE
- 6:45 p.m. COMMUNITY SPEAK OUT
- 7:00 p.m. RADIO FREE AZTLAN - La Raza Unida Party examine their prospects of winning November's election for the governorship.
- 8:00 p.m. LEGALESE - a program of legal rights and information presented to you by the Houston Bar Association and Pacifica.
- 8:30 p.m. NEW DIRECTIONS - a new time on a new day for this new approach in solving the old problem of prisoners and exes following their old footsteps.
- 9:00 p.m. HEALTH TO THE PEOPLE - Dr. Melvin Huckaby talks this month about Medicaid: dental benefits for welfare recipients, with Dr. Auther Riddle, Dr. Arthur Higgs, Dr. Jack Harris and members of the Houston District Dental Society and the Charles Dental Society.
- 10:00 p.m. RIGHT FACE - Bob Mitchell's leanings find him in the strangest places -- Conservatism may be the politics of reality, but that dreadnought is set outside the door with the milk-bottles for the duration.
- 10:30 p.m. SCLC SPEAKS
- 11:00 p.m. AIR WAVES - Gav and Duffy

WEDNESDAY

9

- 3:00 a.m. OESERT ISLANDS and toothsome delicacies from the Seabees' knees.
- 6:00 a.m. MANOY IN THE MORNING
- 9:00 a.m. PEDALLING IT - See Highlights. Repeated from last Wed. night
- 10:00 a.m. CITY COUNCIL
- 12:00 N LUNCH begins today when City Council ends, which is never after high noon.
- 12:30 p.m. ON THE CORNER with Bill Fuller
- 1:00 p.m. REACTIONS from the telephone
- 2:00 p.m. FREE MUSIC STORE - John Hammond and Larry Johnson, folksingers singing, you guessed it, of an evening at New York's Free Music Store. Produced by the Music Dept. at WBAI.
- 3:30 p.m. GUILLAMO ARENAS, ARTISTIC CO-ORINATOR FOR THE BALLET FOLKLORICO talked to Joanne Gavin about the BALLET and Amalia Hernandez, how and why she founded it and how she's progressing with the Ballet Folklorico of America which will include native dances, songs and rituals from Alaska to Chile.
- 4:30 p.m. GETTING THERE IS HARDLY ANY FUN AT ALL
- 5:45 p.m. GULF COAST ACCESS
- 6:00 p.m. LIFE ON EARTH
- 6:30 p.m. WAR FILE
- 6:45 p.m. COMMUNITY SPEAK OUT
- 7:00 p.m. NeWomeNews - The current affairs of women are reported and discussed by Marie, Pat Dowell, Ruth Milburn and guests and phone calls. If you have news, call them or leave a message.
- 8:00 p.m. MACBETH AND THE TEN-PIN MUROERS - An adaptation of Wms. Shakespeare's MACBETH,

written and produced by Mad Dog Lubowsky, performed by Ben Teague, Dave Crossley, Mike August, Kit Van Cleave, Phil Cosgrove, Eric Bone, Pat Dowell, W. Anthony Fuller, Jeniter Palmer and Mad Dog Lubowsky. Prime material . . . knocked the eyes out of the people here (and after that Mad Dog did pretty much what he wanted).

9:00 p.m. INOIAN MUSIC ANO CULTURE with Anil Kumar

10:00 p.m. THE CAPTIVE UNICORN - Kit van Cleave keeps a close watch and tells how it ticks.

11:00 p.m. AIR WAVES - Divan Guppy

THURSDAY

10

- 3:00 a.m. OESERT ISLANO
- 6:00 a.m. MANOY IN THE MORNING
- 9:00 a.m. QUOOLIBET continues the Thursday series of, the music of contemporary American composers. Today Bob Kainer and Phil Cosgrove present Louise Talma's SIX ETUDES FOR PIANO performed by Beveridge Webster, and Dane Rudhyar's PAEANS performed by William Masseios.
- 11:00 a.m. LUNCH - munch a bunch in company rather than at the company, then follow Bill Fuller
- 12:30 p.m. ON THE CORNER
- 1:00 p.m. REACTIONS on the phone
- 2:00 p.m. ACCOROFANS ANO BAGPIPES - This is another program that was buried in the Pacifica Archives, and if the program is anything like the title you know what to expect.
- 3:30 p.m. AGAINST IMPACTION OF LANGUIO EOGES ANO TURO TALES - This too was dredged from the Archives -- sit back, relax, inhale . . .
- 3:00 p.m. THE BRIARPATCH - the continuing saga of Wetwimple with additional dialogue by anyone else with something interesting to say or hear.
- 4:00 p.m. GETTING THERE IS HARDLY ANY FUN AT ALL
- 5:45 p.m. GULF COAST ACCESS
- 6:00 p.m. LIFE ON EARTH
- 6:30 p.m. WAR FILE
- 6:45 p.m. COMMUNITY SPEAK OUT
- 7:00 p.m. RADIO FREE AZTLAN today embraces culture and music from Aztlan.
- 8:00 p.m. THE EVENING PROGRAM - see highlights
- 10:00 p.m. FREE MUSIC STORE: MARK SIMPSON ANO MATT HECK sing songs of spiritual postfivity and natural enlightenment.
- 12 M. AIR WAVES - Eagle bones and dove feathers

FRIDAY

11

- 3:00 a.m. OESERT ISLAND - tarred and feathered, sickled and shorn, too late to debate, too early to adorn.
- 6:00 a.m. MANOY IN THE MORNING
- 9:00 a.m. QUOOLIBET Phil Cosgrove and Michael Lawton provide Music for a While. A while is rather small, sometimes hairy creature of general description and often mistaken identity.
- 11:00 a.m. LUNCH - did you punch the time clock? Did it hurt?
- 12:30 p.m. ON THE CORNER and around the bend with Bill Fuller and a live microphone -- that's Louisiana and Prairie, o bury me not.
- 1:00 p.m. REACTIONS, incitements, incantations and anything else that listeners want to call in will be aired -- obscenities will be cut off in mid-utterance.
- 2:00 p.m. MALCOM X: RETROSPECTIVE - A documentary on the life of Malcom X from his first impact on the black power movement and the Black Muslim movement in 1960 to his death in 1965. Produced by Chris Koch for WBAI from tapes recorded over the five year span.

free music store...

the address is 618 Prairie

and the concerts are live

so come down

Pacifica fm 90

Thursdays 10pm

- 3:00 p.m. **PUBLIC AFFAIRS OPEN HOUR** - A chance for the newsgroup to share its knowledge of detail(s).
- 4:00 p.m. **GETTING THERE WITH RAY STEVENSON**
- 5:30 p.m. **THIS WEEK'S MOVIES AND TV** - Pat Dowell rehearses her memory of what's coming up worth seeing and worth avoiding at the neighborhood Cinnie and on the TV.
- 6:00 p.m. **LIFE ON EARTH** - news summary
- 6:30 p.m. **INTERNATIONAL REVOLUTIONARY PEOPLE'S PARTY NEWS** - Karen Northcott and John Henderson present this coagulation of information from and for 'the people.'
- 7:00 p.m. **WORDS TO THE WISE** - The Reverend Robert Bakhaus brings you 30 minutes of Libertarian commentary every Friday at 7 p.m.
- 7:30 p.m. **H.H. HOLLIS** reads science-fiction
- 8:00 p.m. **POISONED ARTS** - The adventures of Charles and plumply empty Emily Ann Andrews continue as Emily's laces stump Charles's fingers and cosmic Mr. Waburn turns to a deft apple spider and ?
- 8:30 p.m. **MORE FREE MUSIC** - Perhaps we'll be able to broadcast from a local club or music center, perhaps we'll have musicians in the studios and round up an audience off the streets, perhaps we'll replay the aircheck from last night's Free Music Store, in any case we'll play our neighbor's music.
- 10:00 p.m. **FOR BLACKS ONLY** - Lionel Taylor, Chief Enforcer

**SATURDAY**

**12**

- 1:00 a.m. **SPACE INVADERS MAGIC THEATER FOR MADMEN ONLY** - Heavy entertainment -- not for the sane, squeamish or sleepy -- with strange visitors from other realms tantalizing your tubes with the tunes of today.
- 5:00 a.m. **MORNINGTOWN RIDE** - a usually quiet meandering with Phil Cosgrove leading the cart and turntables by the rose.
- 7:00 a.m. **INTERNATIONAL MUSICAL TROT WITH LISELOTT** - Is the "Gray Ghost" a Weimaraner - An interview with Dr. Allyah von Nussbaumer tells all.
- 9:00 a.m. **BLUE SKIES** Over Walt Silvus - Music that hopefully encourages the belief that bright days are good to get up to.
- 12:00 n **BLUE GRASS EXPRESS** with Ivan Kuper and/or Tony Ullrich
- 3:00 p.m. **ON LOCATION** - Jim Ohmart wants to borrow your ears for an hour . . . he'll take them to strange places and return them in good condition.
- 4:00 p.m. **AFRO-ASIAN CULTURAL CARAVAN** sponsored by the Islamic Society of Greater Houston with Dr. Zafar Taqvi and selections from Indian Classical Music.
- 5:00 p.m. **TWILIGHT RAGAS** - String singing as the sun goes down
- 7:00 p.m. **ROLL OVER MARCONI** - Lynne and Bill Narum with the assistance of Jim Ohmart - Wanda Ericson, Bill Fuller and friends provide Houston with a night of live music and poetry, panel discussions, and produced segments. Your invited to phone in or come down.
- 11:00 p.m. **SCRATCH OUT TOGETHER** - Erstwhile ermine hunters, determined mind blinders, flood of fusion Faustian and tucia, you can tell a man by the company he keeps, but not always by the company you find him in.

**SUNDAY**

**13**

- 2:00 a.m. **MORNING ORGANTIOE** -- "Organtide Amature Hour" Mark C. in his usual fasion finds gems in the murk of your mind. Complaints have been received as to just who is Damlon. Today you'll find out. Aren't you thrilled? . . . or don't you care?
- 8:00 a.m. **ALL THE TIREO HORSES** and Bill Fuller and Scott Gregory breaking open the Sunday funnies and the yolk over their eyes.

- 10:00 a.m. **RELIGIOUS PROGRAMMING** - The Interaction of Islam with christianity and Judaism -- excerpt sfrom Islamic Symposium, question - answer session with Dr. Ibrahim azdi and Mr. Tahsin Ritai.
- 11:00 a.m. **MIR, ZHIVAGO** (world - peace, life) Peru. Marie Blazek returns with music from another South American country.
- 1:00 p.m. **OPERATION BREAD-BASKET** Mike Smith transmits information about who's ripping off the black community this week.
- 2:00 p.m. **AUTOPHYSIOPSYCHIC** Ronnie Wright manipulates the controls, the music and your afternoon.
- 6:00 p.m. **DRAFTS AND MILITARY RIGHTS** a program of information for those concerned about the Armed Services
- 6:30 p.m. **DAS KAPITOL** Pacifica Washington's weekly report.
- 7:00 p.m. **HOUSTON CONCERT HOUSTON** - an hour of music created and performed by local artists and composers, recorded here at the studio or out where it happened. If you want to play or know someone who does please contact us about playing live.
- 8:00 p.m. **PLAY IT AGAIN SAM** - a repeat broadcast of the week's most requested program(s).
- 9:30 a.m. **UNDER THE THUMB**
- 10:00 a.m. **BARD AT LARGE** Rae Lake Costas and Doug Friedenberg realign some boundaries of thought.
- 11:00 p.m. **DEJA VU** - goldie oldies and Anne McCord

**MONDAY**

**14**

- 3:00 a.m. **DESERT ISLAND** - old blues and in-depth peering in depths of debt, death and dread, and once-sunny once-fields o'er-doomed and beetling--if you think that's bad, come downtown and take less than five deep breaths.
- 6:00 a.m. **MANDY IN THE MORNING** sweet juices from the vine, sweet color from the rind, simple breaths for your time and Monday morning for your mind.
- 9:00 a.m. **QUODLIBET** with Phil Cosgrove and music both classic and contemporary.
- 11:00 a.m. **LUNCH** -- don't get grunched in the crunch line--get out off the street-- come down to Pacifica and eat with us.
- 12:30 p.m. **ON THE CORNER** with Bill Fuller and the On-Air microphones--it rains old Bill will probably be squatting on the stoop conversing with the trails of ants going in and out of the Bowery.
- 1:00 p.m. **REACTIONS** open phone lines for any impulse
- 2:00 p.m. **IN ONE EAR AND OUT THE OTHER** A look at the human mind, how it works, and how it should-could work. Included are scientific, splritual, musical inputs which focus one's heads, such as: R.D. Laing, Harry Partch, Loudon Wainwright III, Ben Johnston, Swami Vevekenanda, Tom Lehrer, Roxy Morgan, Germaine Greer, the Arica Institute, John Cage, Buffy St. Marie, Ranger and Phoenix, Biff Rose, Beaver and Krause and others. Caryl Ratner and Marc Spector produced the program at WBAI.
- 3:30 p.m. **JEAN SHEPHARO** tumor humor and blooper flipping



- 4:30 p.m. **GETTING THERE IS HAROLY ANY FUN AT ALL** but music helps keep the stripes in the road in line.
- 5:45 p.m. **GULF COAST ACCESS**
- 6:00 p.m. **LIFE ON EARTH** new summary
- 6:30 p.m. **WAR FILE**
- 6:45 p.m. **COMMUNITY SPEAK OUT**
- 7:00 p.m. **THE TRUCKER: WORKING CLASS HERO?** What is the rider of the asphalt plains really like? Do they use drugs? Are they true to the "Little Woman?" Are the drivers of the Big Dnes adventure heroes or another depressed minority, neither? Produced by Marie Blazek and Vicki Moreland
- 7:30 p.m. **SCHOOL BOARD** The last meeting of the Board of Trustees before the school year begins is usually long and fraught with misunderstanding and moments of decision. You can listen to the proceedings all night long on KPFT, but if you want to influence them you'll have to go to the meeting.
- 10:00 p.m. **YANKEE DOODLE**
- 11:00 p.m. **BLUE MONDAY - GOT TO WORK LIKE A SLAVE ALL OAY**

**TUESDAY**

**15**

- 3:00 a.m. **DESERT ISLAND** - sandy spears soundful and changing
- 6:00 a.m. **MANDY IN THE MORNING**
- 9:00 a.m. **QUODLIBET** with Phil Cosgrove and Bob Kainer and Contemporary music
- 11:00 a.m. **LUNCH** with the Pacifica bunch and Bill Fuller
- 12:30 p.m. **ON THE CORNER**
- 1:00 p.m. **REACTIONS**
- 2:00 p.m. **WHO IS ROGER MCAFEE AND WHY OOEES HE CALL HIMSELF A COMMUNIST?** Roger McAtee gained world-wide fame when he posted his farm as \$100,000 collateral for Angela Davis' bail. In September the "multi-national-media-ideology pre-US Centennial" festival will be held to support the Workers' Agricultural and Industrial Cooperative, which plans to fight for redistribution of corporately held farms. Produced by Larry Bensky.
- 2:40 p.m. **THE LITERATURE OF ACAOIA** This is another title that glimmered up from the page of computered nomenclature that is the Houston extension of the Pacifica archives; it is presumed to be something other than the opening to Evangeline.
- 3:00 p.m. **THE BRIARPATCH** While a while to provide some whistle as you work.
- 4:30 p.m. **GETTING THERE IS HARDLY ANY FUN AT ALL**
- 5:45 p.m. **GULF COAST ACCESS**
- 6:00 p.m. **LIFE ON EARTH** news summary
- 6:30 p.m. **WAR FILE**
- 6:45 p.m. **COMMUNITY SPEAK OUT**
- 7:00 p.m. **RAOIO FREE AZTLAN** - news and community information, folk and revolutionary music and the Chicano viewpoint, this week discussing community groups, their goals and effectiveness.
- 8:00 p.m. **LEGALESE** a program of legal rights and information presented by the Houston Bar Association and KPFT.
- 8:30 p.m. **NEW DIRECTIONS** Where do prisoners go when the Big Door is finally opened? Back to the same tracks? They don't have to.
- 9:00 p.m. **HEALTH TO THE PEOPLE** Dr. Melvin Huckaby and members of the Houston District Dental Society and the black Charles George Dental Society continue their discussion of Medicaide and dental benefits for welfare recipients.
- 10:00 p.m. **RIGHT FACE** Bob Mitchell and his Conservative politics of Reality
- 10:30 p.m. **SCLC SPEAKS** Reverend Wm. A Lawson, chairman of the Houston chapter, opens the phone lines to questions and answers
- 11:00 p.m. **EAR WAVES**

**WEDNESDAY**

**16**

- 3:00 a.m. **DESERET ISLAND** quiet, sometimes noisy sprinklings of inklings and actual thinklings
- 6:00 a.m. **MANDY IN THE MORNING**
- 9:00 a.m. **ZEN BONES**, a performance by Alan Watts lifting prologue to the City Council
- 10:00 a.m. **CITY COUNCIL**
- 12:00 n **LUNCH** at KPFT begins on Wednesdays after City Council ends, which is never much later than noon.
- 12:30 p.m. **ON THE CORNER**
- 1:00 p.m. **REACTIONS**
- 2:00 p.m. **FREE MUSIC STORE** - Country Fiddlin' from the Apple County String Band, Kenny Koseck and friends, Alan Block and Bill Garbus and the incredible Tex Logan. Produced by -- Tom Whitmore and the Music Dept. at WBAI.
- 3:00 p.m. **THE TRUCKER: WORKING CLASS HERO?** repeated from Monday evening What is the rider of the asphalt plains really like? Do they use drugs? Are they true to the "little woman?" Are the drivers of the Big Ones adventure heroes or another oppressed and depressed minority? or Neither? produced by Marie Blazek and Vicki Moreland
- 3:30 p.m. **THE BEST OF BUDOY HOLLY**, released by Decca records recently, this double album features suchies as RAVE ON, PEGGY SUE GOT MARRIED, SLIPPING AND SLIDIN, NDT FADE AWAY, MAYBE BABY, THAT'LL BE THE DAY, BD DIDDLEY, BRDWN EYES HANDSOME MAN among others.
- 4:30 p.m. **GETTING THERE IS HAROLY ANY FUN AT ALL**
- 5:45 p.m. **GULF COAST ACCESS**
- 6:00 p.m. **LIFE ON EARTH** news summary
- 6:30 p.m. **WAR FILE**
- 6:45 p.m. **COMMUNITY SPEAK OUT**
- 7:00 p.m. **NeWomeNewS** - Local women news items or events to be publicised should contact Marie Blazek, Pat Dowell or Ruth Milburn, or come down and deliver in person.
- 8:00 p.m. **THE RAOIO IV: GOOO SEES THE TRUTH BUT WANTS;** fate knocks on the door For a glimpse of Tolstoy's Russia and America's Beethoven of the early forties be sure to catch these adaptations for radio by Charles Potter and David Rapkin, musical direction by James Irsay with techie effects by David Rapkin. Produced at WBAI.
- 8:30 p.m. **HAM SWEEO AND LONNIE FINELY** Abraham Sweed is a 51 year old blues guitarist who grew up in a big family of musicians in the rocky woodlands west of Navasota. He has played with Mance Lipscomb in the country bars that abound in that neck of Texas, and in one of them, the Forest Inn, this two-man set was recorded between sets on the juke-box. Thanks to Dave Ringland for taking the Pacifica tape recorder out into the middle of the woods and bringing it back with its operator, safely.
- 9:00 p.m. **INOIAN MUSIC AND CULTURE**
- 10:00 p.m. **THE CAPTIVE UNICORN** Kif Van Cleeve and the harmonics from the spheres.
- 11:00 p.m. **AIR WAX**

**THURSDAY**

**17**

- 3:00 a.m. **DESERT ISLANOs** and bridges into morning
- 6:00 a.m. **MANOY IN THE MORNING**
- 9:00 a.m. **QUODLIBET** - Thursday series of Contemporary American Composers with Phil Cosgrove and Bob Kainer presenting Vivian Fine's "Alcestis," performed by the Imperial Philharmonic Orchestra of Tokyo conducted by William Strickland, and George's Antheil's Serenad No. 1 for Strings, perormeo

by the Oslo Philharmonic Orchestra conducted by Alfredo Antonini.

11:00 a.m. **LUNCH** should be a meal shared with friends - you can hear interesting and imminently digestible things here.

12:30 p.m. **ON THE CORNER** with Bill Fuller

1:00 p.m. **REACTIONS** from the listening audience to anything.

2:00 p.m. **UNDERGROUND COMIX OF THE AIR** How many people grew up reading Duperman - DC Comics and thought all those straining bodies in those painted costumes were strangely moving? What did it develop? Have you read ZAP No. 4? Produced in San Francisco, head funnies head quarters.

2:40 p.m. **JAPANESE TEA CEREMONY** read by Alan Watts The physics of metaphysics occasionally hamstringing themselves to provide paradoxical tensions as when a coin spins faster and faster until it stops.

3:00 p.m. **THE BRIARPATCH** Friends with your afternoon tea.

4:30 p.m. **GETTING THERE IS HARDLY ANY FUN AT ALL**

5:45 p.m. **GULF COAST ACCESS**

6:00 p.m. **LIFE ON EARTH** news summary

6:30 p.m. **WAR FILE**

6:45 p.m. **COMMUNITY SPEAK OUT**

7:00 p.m. **RADIO FREE AZTLAN:** news and community information, folk and revolutionary music, the Chicano viewpoint tonight examines economic discrimination directed against the farm workers.

8:00 p.m. **THE EVENING PROGRAM** SEE HIGHLIGHTS

10:00 p.m. **FREE MUSIC STORE - BRUISER BARTON AND THE DRY HEAVES** The illustrious, incomparable and indomitable Bruiser brings his Heaves for a special concert for Pacifica listeners--come down and see, or tune in and just listen.

12:mid **HAIR WAVES**

12:00 **Mid EAR WAX**

FRIDAY

18

3:00 a.m. **DESERT ISLAND** and hole of rabbit, tossed with carrot slivers and ghoulish nibbles.

6:00 a.m. **MANDY IN THE MORNING**

9:00 a.m. **QUODLIBET** from Michael Lawton and Phil Cosgrove--Music for a While

11:00 a.m. **LUNCH**

12:30 p.m. **ON THE CORNER**

1:00 p.m. **REACTIONS**

2:00 p.m. **THE BLACK ARTIST IN SOUTH AFRICA** A program from the Pacifica Archives describing the art of oppression and the art of freedom in one of the most completely tyrannical countries in the world.

3:00 p.m. **PUBLIC AFFAIRS OPEN HOUR** Packages from the Newsgroup

4:00 p.m. **GETTING THERE IS HARDLY ANY FUN AT ALL** with Ray Stevenson trying to take some of the bumps out of the road

5:30 p.m. **THIS WEEK'S MOVIES AND TV** Pat Dowell waxing and warning

6:00 p.m. **LIFE ON EARTH** news summaries

6:30 p.m. **WHOLE EARTH NEWS** with Karen Northcott and John Henderson

7:00 p.m. **WORDS TO THE WISE** from the Reverend Robert Bakhaus 30 minutes each week of Libertarian Commentary.

7:30 p.m. **H.H. HOLLIS** reads science fiction

8:00 p.m. **POISDNEED ARTS** - the ever-adventures of Charles and Emily Ann Andrews rubbing elbows with conventions, pretensions, dimensions and rhinoceri.

8:30 p.m. **MORE FREE MUSIC**

10:00 p.m. **FOR BLACKS ONLY WITH** Mr. B himself, Lionel Taylor



SATURDAY

19

1:00 a.m. **SPACE INVADERS MAGIC THEATER FOR MADMAN ONLY** radio tyranny for people who like to follow

2:00 a.m. **MORNINGTOWN RIDE** music for the supreme sublime quietude of the collective consciousness

7:00 a.m. **INTERNATIONAL MUSICAL TRDT WITH LISELOTT** 1,2,3,4,5,pfui, 7... German jokes and stories with Liselotte Babine

9:00 a.m. **BLUE SKIES** over Walt Silvus if you sleep late on Saturdays, and wake up with a rough edge, throw it out of bed and turn on the radio... Walt will smile in your ears, and if we can keep him from shifting into "PITCH" gear, the music should be soothing.

12:00 n **BLUE GRASS EXPRESS** with Tony Ulrich

3:00 p.m. **ON LOCATION** What will the people of Houston have to say today? Vulgarities, threats, alcohol induced drive, all live.

4:00 p.m. **AFRO-ASIAN CULTURE CARAVAN** led by Dr. Zafar Taqvi selections from African American Classical music 1, with special guest Thomas (Ahmad) Devereaux.

5:00 p.m. **TWILIGHT RAGAS** 13 sympathetic strings for heralding the red of the sun

7:00 p.m. **ROLL OVER MARCONI** Lynne and Bill Narum, Wanda Ericson, Bill Fuller, Jim Ohmart and friends. Live performances from Ragas to Rock. Your invited to phone in or come down. Artist wishing to perform call Lynne or Bill at 526-7352.

11:00 p.m. **SCRATCH OUT TOGETHER** slippin' and a'slidin', tripping' and a'jivin', blow, blow, blow the man down.

SUNDAY

20

2:00 a.m. **MORNING ORGANTIDE** with Westlake Green Possible tapes from unknown Houston groups... in the endeavor to give you what you want to hear at this un-Godly hour, listen for our SUPER-CONTEST: commercial, but effective

8:00 a.m. **ALL THE TIRED HORSES** Bill Fuller and Scott Gregory parade along in front.

10:00 a.m. **RELIGIOUS PRDGRAM-MING** - Marxism, Capitalism and Islam discussed in excerpts from the recent Islamic symposium. A question-answer session with the telephone will follow the tape, with guests Dr. Harrel Tillman and Mr. A.H. Yunis.

11:00 a.m. **MIR, ZHIVAGO** (world-peace, life) Taiwan. From the collection of Mr. Simon Chin in Houston, we will hear popular music

sung in Mandarin and classical Chinese theater music sung in Cantonese.

1:00 p.m. **OPERATION BREAD-BASKET** with Michael Smith

2:00 p.m. **AUTOPHYSIOPSYCHIC** jazz for a Sunday afternoon, for ever-flowing and regenerating body-minds

6:00 p.m. **SOUTHEAST ASIA NEWS SUMMARY** produced in Berkeley by the Southeast Asia Information Bureau

6:30 p.m. **DAS KAPITOL** Pacifica Washington's week in review

7:00 p.m. **HOUSTON CONCERT HOUSTON** If you or your favorite musician(s) haven't been heard on Pacifica it's only because we haven't heard about you-- don't wait until we do, call us up and tell us.

8:00 p.m. **PLAY IT AGAIN SAMA** hour of time for the most requested program of the week.

9:00 p.m. **MADDOGS BITE** and pinch

10:00 p.m. **BARD AT LARGE** Rae Lake Costas and Doug Friedenber

11:00 p.m. **DEJA VU** old folk and new, and Ann McCord

MONDAY

21

3:00 a.m. **DESERT ISLAND** - mobile rollers and rumpling boulders... there's something happening here--do you know what it is?

6:00 a.m. **MANDY IN THE MORNING** Mandy's out To lark about And sling and shout til morning Come the dawn, the coffe warm Can scarcely drink for yawning.

9:00 a.m. **QUOBLIBET**

11:00 a.m. **LUNGHEAT** and tunchmeat, lemonade and grassblades, bits from there, here and everywhere mixed with music and of course Bill Fuller.

12:30 p.m. **ON THE CORNER**

1:00 p.m. **REACTIONS**

2:00 p.m. **ART AGAINST EMPIRE** On the first day of the Republican Convention, this is an hour of poetry dedicated to an opposition of Nixon's bombing of North Vietnam and mining and Haiphong harbor. The program includes many poets from the Los Angeles area who gathered at KPFK on Sunday, May 14 for a live reading.

3:00 p.m. **JEAN SHEPARD AND WISEACRE MATHERMY** cracking and cackling

4:00 p.m. **UNDER THE THUMBS**

4:30 p.m. **GETTING THERE IS HARDLY ANY FUN AT ALL**

5:45 p.m. **GULF COAST ACCESS**

6:00 p.m. **LIFE ON EARTH** news summary

6:30 **WAR FILE**

6:45 p.m. **COMMUNITY SPEAK OUT**

7:00 p.m. **A WOMAN'S FORUM** News of interest to women; events in Houston and the rest of the US. Ruth Milburn and Pat Dowell keep a calendar of Houston organizations, and co-ordinate discussions on topics like employment for women, the education of women, divorce, and the Equal Rights Amendment. Call us at 224-4000 to comment or ask questions.

8:00 p.m. **REPUBLICAN NATIDNAL CONVENTION** - at least one hour of coverage including tapes from the streets, parking lots and hotel rooms of Miami Beach as well as action on the floor.

9:00 p.m. **JULIA MENDINA** - Julia Mendina has come to the station on many happy occasions, to play and sing, and laugh and tell little stories, and now that Studio B is functioning we can hold an audience enough to appreciate the dimension of her voice. She will perform live from the Free Music Store this Thursday night at 10 p.m. This half hour is gathered from the too few times we taped.

9:30 p.m. **BIRTH CDNTROL: IT'S HER PROBLEM** -- a look at some popular conceptions of conception produced by Marie Blazek at KPFA

10:00 p.m. **YANKEE DDDDL**

11:00 p.m. **BLUE MDNDAY** - got to get my rest cause Monday is the best

TUESDAY

22

3:00 a.m. **DESERT ISLAND** - the pump don't work cause the vandals took the handle

6:00 a.m. **MANDY IN THE MORNING** ukelele man do you think you can bring me tce and fire in the morning?

9:00 a.m. **QUODLIBET** -- Phil Cosgrove and Bob Kainer present music from contemporary composers.

11:00 a.m. **LUNCH** - What will be be like when fingerprinting is illegal?

12:30 p.m. **ON THE CORNER** with Bill Fuller

1:00 p.m. **REACTIONS**

2:00 p.m. **THE CHILEAN ROAD TO SOCIALISM** -- Sr. Fernando Bachelet, First Secretary of the Chilean Embassy in Washington, D.C., talks about the programs, accomplishments and problems of the Popular Unity government in Chile today. He also talks about U.S.-Chile relations and the recent interference of the ITT Corp. In the country's internal affairs. An extremely informative look is had into the complex and historically unique situation of socialism in Chile. Produced by Susan Duncan.

3:00 p.m. **THE BRIARPATCH** seeing to the internal security of hare affairs

4:30 p.m. **GETTING THERE IS HARDLY ANY FUN AT ALL**

5:45 p.m. **GULF COAST ACCESS**

6:00 p.m. **LIFE ON EARTH**

6:30 p.m. **WAR FILE**

6:45 p.m. **COMMUNITY SPEAK OUT**

7:00 p.m. **RADIO FREE AZTLAN:** news and community information, folk and revolutionary music, the Chicano viewpoint tonight looks at the pairing plan in present educational systems.

8:00 p.m. **THE REPUBLICAN NATIDNAL CONVENTION KPFT** continues its broadcasting of the Pacifica network's coverage of the Republican Nationals.

10:00 p.m. **RIGHT FACE** Bob Mitchell asserts that Conservatism is the politics of Reality.

10:30 p.m. **SCLC SPEAKS** Reverend William A. Lawson, Chairman of the local chapter, opens the phones to all and sundry.

11:00 p.m. **AIR WAVES** - Gavin Duffy

WEDNESDAY

23

3:00 a.m. **DESERT ISLAND** - a home for headless heroes and wild mountain thyme, serpentine etchings of heat and frost, the hole before the day rounds and warms begins to blossom.

6:00 a.m. **MANDY IN THE MORNING** Bucephalus in the evening, hop to, stand straight and if you're lucky your forces won't turn to hate.

9:00 a.m. **DEMONSTRATION OF ALPHA CONTRDL: BIO-MEDIATION, A WAYLESS WAY** The Teachings of Don Juan unfold that all ways go nowhere, and that here is the only here so there cannot be (the only here), and it is the use we make of here being here that we judge and are judged by. A level of interaction such as alpha waves will of course result in a here amplified by the level. Extend that, and imagine a telepathic city council, and citizenry.

11:00 a.m. **CITY COUNCIL** will not respond to those that do not call attention to themselves, and even then the odds are about 75 - 25 against.

12:00 **N. LUNCH**

12:30 p.m. **ON THE CORNER**

1:00 **REACTIONS**

2:00 p.m. **FREE MUSIC STORE** - New York Music Company performed electronic music by Alfredo del Monaco, five vocal selections by the American Vocal Quintet, and Francis Poulancs' Sextuor performed by Etzuko Tazaki and the Hallas Woodwind Quintet. Produced by

William Hamilton and the Music Dept. at WBAI.

3:45 p.m. **WELSH POETS I** -- Dannie Abse - Dannie Abse was born in 1923 in Cardiff where he went to school and began his medical studies at the Welsh National School of Medicine. Later he completed his doctoral studies at Westminster Hospital, London. At present he lives in London where he thinks of himself as "a dilettante doctor and a professional poet." A selection of his poems was published by Hutchinson in 1970, and the volume was awarded a Welsh Arts Council prize in 1971.

4:00 p.m. **HAM SWEED AND LONNIE FINELY** Abraham Sweed is a 51 year old blues guitarist who grew up in a big family of musicians in the rocky woodlands west of Navasota. He has played with Mance Lipscomb in the country bars that abound in that neck of Texas, and in one of them, the Forest Inn, this two man set was recorded between sets on the juke box. (The juke makes money, and Ham and Lonnie have to be Paid.)

4:30 p.m. **GETTING THERE IS HARDLY ANY FUN AT ALL**

5:45 p.m. **GULF COAST ACCESS**

6:00 p.m. **LIFE ON EARTH** - news summary

6:30 p.m. **WAR FILE**

6:45 p.m. **COMMUNITY SPEAK OUT**

7:00 p.m. **NeWomeNewS** news and the current affairs are detailed and discussed in this program organized by Marie Blazek, Pat Dowell and Ruth Milburn. If you have something to say or contribute, contact one of them or leave a message for them at the station.

8:00 p.m. **REPUBLICAN NATIONAL CONVENTION** Formalization of the platform, live from the floor, and reports of activities from earlier in the day.

9:00 p.m. **INDIAN MUSIC AND CULTURE** will begin tonight when the Pacifica Network's coverage of the convention ends for the night -- this is scheduled to happen at 9:00 p.m. our time, but it could be later.

10:00 p.m. **THE CAPTIVE UNICORN** and Kit Van Cleeve

11:00 p.m. **EAR WAVES** - Alvin Fluffy

#### THURSDAY

# 24

3:00 a.m. **DESERT ISLAND** - Winchester Cathedral, you're bringin' me down . . . pass it over to me . . . SQUEEE-ELLLLCHHHHHSSSS

6:00 a.m. **MANDY IN THE MORNING**

9:00 p.m. **QUODLIBET** continues its Thursday series of Modern American Composers, related by Phil Cosgrove and Bob Kainer. Today, Miriam Gideon's "Symphonia Brevis," performed by the Radio Orchestra of Zurich conducted by Jacques Monod; and William Bergsma's "Tangents," performed by Grant Johannesen, piano.

11:00 a.m. **LUNCH**

12:30 p.m. **ON THE CORNER**

1:00 p.m. **REACTIONS**

2:00 p.m. **ARABY** by James Joyce - the deftly brutal story of a young Dublin lad who secretly loves his friend's sister, and promises to get her a bit of something from the bazaar. On the night of the bazaar, his uncle is quite late getting home with the admission money, and by the time the boy arrives many of the booths are closed. In the dark shadows of the galleries overhead the boy finds strength in the quiet revelation of inescapable randomness that is the tying forces of life.

2:30 p.m. **AZTEC POETRY** - This program came to our attention as a title with no description, but for 13 minutes who can be upset?

2:45 p.m. **A COUNTRY DOCTOR** by Franz Kafka, performed by Eric Bauersfield Nihilism means nothing to the dancing peasants.

3:00 p.m. **THE BRIARPATCH** - catchy title

4:30 p.m. **GETTING THERE IS HARDLY ANY FUN AT ALL**

5:45 p.m. **GULF COAST ACCESS**

6:00 p.m. **LIFE ON EARTH**

6:30 p.m. **WAR FILE**

6:45 p.m. **COMMUNITY SPEAK OUT**

7:00 p.m. **RADIO FREE AZTLAN** - news and community information, folk and revolutionary music, the Chicano viewpoint tonight looks at public school dropouts and the problems that causes in the community.

8:00 p.m. **REPUBLICAN NATIONAL CONVENTION** Tonight is the conclusion of the GOP's grand old get-together.

10:00 p.m. **FREE MUSIC STORE: JULIA MENDINA**; Easy Boy - Julia Mendina has a voice of the highest calibre and an old Yamaha guitar tuned to match, and she will sing and play for all who listen. Easy Boy is a trio of acoustic guitar, harpsichord and electric bass who got together first in Saigon, and played from there back to their home state of Louisiana. Their music is their own, and they are happy to share it.

12:00 **MID AIR WAVES** - Vagin Fufdy

#### FRIDAY

# 25

3:00 a.m. **DESERT ISLAND**, troppile highlands, garbage heaps amorphous and a 'bilin', Ernestine Liebowitz, Tantamount Romankovitz, and elementary words and sounds a 'pilin'.

6:00 a.m. **MANDY IN THE MORNING**

9:00 a.m. **QUODLIBET** from Phil Cosgrove and Michael Lawton with Music for a While.

11:00 a.m. **LUNCH**

12:30 p.m. **ON THE CORNER**

1:00 p.m. **REACTIONS**

2:00 p.m. **AN ACID GRADUATE** Why fly high? Can you get where you're going if you don't know where it is -- how green can other hills be? A program from the Pacifica Archives.

3:00 p.m. **PUBLIC AFFAIRS OPEN HDUR** In depth reports from the Newsgroup

4:00 p.m. **GETTING THERE IS HARDLY ANY FUN AT ALL** with Ray Stevenson playing music to make it better.

5:30 p.m. **THIS WEEK'S MOVIES AND TV** and Pat Dowell talking about the better and worse ones.

6:00 p.m. **LIFE ON EARTH** news summary

6:30 p.m. **WHOLE EARTH NEWS** read by Karen Northcott and John Henderson

7:00 p.m. **WORDS TO THE WISE** 30 minutes each week of Libertarian commentary from the Reverend Robert Bakhaus.

7:30 p.m. **H.H. HOLLIS** reads science fiction and fact.

8:00 p.m. **POISONED ARTS** - the continuing comic adventures of Charles and Emily Ann Andrews

8:30 p.m. **MORE FREE MUSIC** -- taped replays of requested Free Music Stores, of evenings in bars and clubs, live music from the studios and from out in the city.

10:00 p.m. **FOR BLACKS ONLY** Jazz and Lionel Taylor

#### SATURDAY

# 26

1:00 a.m. **SPACE INVADERS MAGIC THEATER FOR MADMEN ONLY** "Beyond the eyes and ears there lie The sound of a color, the scent of a sigh. . ." -- M.B.

5:00 a.m. **MORNINGTOWN RIDE** Into morning and town with Phil Cosgrove

7:00 a.m. **INTERNATIONAL MUSICAL TROT WITH LISELOTT** Are you superstitious? Alien customs in foreign lands with Liselotte Babin.

9:00 a.m. **BLUE SKIES** over Walt Silvus music for late risers

12:00 **NOON - BLUE GRASS EXPRESS** And Tony Ullrich

3:00 p.m. **ON LOCATION** - sure it's in MONO -- what did you expect for a \$15.00 subscription.

4:00 p.m. **AFRO - ASIAN CULTURAL CARAVAN** paced by Dr. Zafar Taqvi, today carries selections from African American Classical Music II, with guest Thomas (Ahmad) Devereaux.

5:00 p.m. **TWILIGHT RAGAS** ancient music holy and pure for the falling of the sun

7:00 p.m. **ROLL OVER MARCONI** Live entertainment originating in the studio. Take us to your party or your party to us. See highlights

11:00 p.m. **SCRATCH OUT TOGETHER** It is noticed that those who must consider that man is an island carry on the heaviest foreign trade.

#### SUNDAY

# 27

2:00 a.m. **MORNING ORGANTIDE REVISITED** Upward and onward to prove to you that KPFT is really a 24 hour station, even at this time. The taped production, "An Evening at Howard and Martha Johnsons," will debut in all their adventuresome excitement.

8:00 a.m. **ALL THE TIRED HORSES** and Scott Gregory and Biller Full pat each other's backs and light matches under each other's feet.

10:00 a.m. **RELIGIOUS PRDGRAM-MING** Islam and Human Rights: excerpts from the recent Islamic Symposium, followed by a question-answer session live on the telephone with guests Mr. M.U. Quazi and Mr. Thomas Devereaux.

11:00 a.m. **MIR, ZHIVAGO** (world - peace, life) celebrating the Houston Slavic Festival -- on July 9, 1972, Texas Poles, Czechs and Ukrainians had an old country jam session. Pacifica was there. Join the fun on our delayed replay.

1:00 p.m. **OPERATION BREAD-BASKET** with Michael Smith

2:00 p.m. **AUTOPHYSIOPSYCHIC** a title created by the facility that is Ronnie Wright, which has to do with self - regenerating body - minds -- that doesn't leave much room for anyone else, but in real life, Ronnie does, and asks for your response also.

6:00 p.m. **DRAFTS** a program of Draft and military rights information, with open telephones

6:30 p.m. **DAS KAPITOL** -- the weekly report from Pacifica Washington

7:00 p.m. **HOUSTON CONCERT HOUSTON** music from, by, for and with Houstonians, all and any. If you know someone who should be heard, let us know.

8:00 p.m. **PLAY IT AGAIN SAM** a rebroadcast of the week's most requested program.

9:00 p.m. **UNDER THE THUMB** squishily

9:30 p.m. **MOCA - FM I** -- The Museum of Conceptual Art, San Francisco, presents an exhibition for radio by 26 artists, each of whom was asked to do pieces of sixty seconds duration. Produced in STEREO by Tom Marioni, Director of the Museum DCA.

10:00 p.m. **BARD AT LARGE** Rae Lake Costas and Doug Friedenberg

11:00 p.m. **DEJA VU** - music and requests, engineered by Ann McCord

#### MONDAY

# 28

3:00 a.m. **DESERT ISLAND** -- fidewoven blintzsense, utterable and bewarming

6:00 a.m. **MANDY IN THE MORNING** a bit warm for a raccoon coat, but what's wrong with a little show?

9:00 a.m. **QUODLIBET**

11:00 a.m. **LUNCH**

12:30 p.m. **ON THE CORNER**

1:00 p.m. **REACTIONS**

2:00 p.m. **MAUD GONNE** -- An original dramatic performance based on the life of the actress, revolutionary and extravagant muse who haunted the poetry of William Butler Yeats from the moment they met until the end of his life. The program was written and produced for Pacifica by Barbara Dratt, with original music composed and conducted by William Kratt, associate conductor of the Los Angeles Philharmonic. Produced at KPFC

3:00 p.m. **JEAN SHEPHARD**

4:00 p.m. **LETTERS FROM VINCENT VAN GDGH** A dramatic presentation of the personal correspondence of Vincent Van Gogh, adapted from The

Complete Letters of Vincent Van Gogh (New York Graphic Society), produced by David Rapkin, adapted by Bonnie Bellow and Terry Shtob with musical direction by James Issay, from WBAI.

4:30 p.m. **GETTING THERE IS HARDLY ANY FUN AT ALL**

5:45 p.m. **GULF COAST ACCESS**

6:00 p.m. **LIFE ON EARTH** news

6:30 p.m. **WAR FILE**

6:45 p.m. **COMMUNITY SPEAK OUT**

7:00 p.m. **MONTHLY OPERA DON GIOVANNI** by Wolfgang Amadeus Mozart, perhaps his greatest opera, performed by Cesare Siepi, Birgit Nilsson, Leontyne Price, Cesare Valtelli, Fernando Corena, the Vienna Philharmonic Orchestra and the Vienna State Opera Chorus, conducted by Erich Leinsdorf. RCA: LSC - 6410

10:00 p.m. **YANKEE DOODLE**

11:00 p.m. **BLUE MONDAY** - Doo Da Doo Da Doo Wa Wee

#### TUESDAY

# 29

3:00 a.m. **DESERT ISLAND** ineluctable modality of the sensual

6:00 a.m. **MANDY IN THE MORNING** purring the ruffles into the Cream of Wheat

9:00 a.m. **QUODLIBET** Contemporary music is presented by Bob Kainer and Phil Cosgrove

11:00 a.m. **LUNCH**

12:30 p.m. **ON THE CORNER**

1:00 p.m. **REACTIONS**

2:00 p.m. **CHILE AND THE U.S.** Jim Petras from Penn. State Univ., analyzes U.S. response to Chile "as a warning to the Third World -- this is the cost you are going to have to pay for pursuing a course of economic nationalism." He emphasizes the conflict between the Treasury Dept. and the State Dept. in decisions affecting Chile. Produced by Susan Duncan.

3:00 p.m. **THE BRIARPATCH** twice a week peek into the patches.

4:30 p.m. **GETTING THERE IS HARDLY ANY FUN AT ALL** but we hope you make it.

5:45 p.m. **GULF COAST ACCESS**

6:00 p.m. **LIFE ON EARTH**

6:30 p.m. **WAR FILE**

6:45 p.m. **COMMUNITY SPEAK OUT**

7:00 p.m. **RADIO FREE AZTLAN**: community news and information, folk and revolutionary music, the Chicano viewpoint today examines the problem of drugs in the Barrios

8:00 p.m. **LEGALESE** a program of legal rights and information produced under the auspices of the Houston Bar Association.

8:30 p.m. **NEW DIRECTIONS** for old and tailed lifestyles, prisoners.

9:00 p.m. **HEALTH TO THE PEOPLE**: Dr. Melvin Huckaby continues his moderation between the Houston District Dental Society and the Charles George Dental Society, on Medicare and dental benefits for welfare recipients.

10:00 p.m. **RIGHT FACE** with Bob Mitchell -- to the horizons (est - ce que possible?) of Conservatism.

10:30 p.m. **SCLC SPEAKS** Reverend William A. Lawson, Chairman of the local chapter, opens the phones to all inputs.

11:00 p.m. **AIR WAVES** - Gear Slaves

#### WEDNESDAY

# 30

3:00 p.m. **DESERT ISLAND** - oranges from sunny Mandalay, textures woven hemispheres away, staples with and beyond simple porridge

6:00 p.m. **MANDY IN THE MORNING**

9:00 a.m. **FREE MUSIC STORE** -- John Hammond and Larry Johnson, folksingers, performed at the FMS in New York, produced by the Music Dept. WBAI.

10:00 a.m. **CITY COUNCIL**

12:00 NOON - LUNCH  
12:30 p.m. ON THE CORNER  
1:00 p.m. REACTIONS

2:00 p.m. FREE MUSIC STORE  
Roland Hanna, piano; Ron Carter, bass; Clarence Stromin, drums  
Romantic jazz with plain beautiful melodic content held together by solid structure and some of the most sensitive drumming heard on the FMS in New York. Produced at WBAI.

2:45 p.m. WELSH POETS II - Leslie Norris was born in Merthyr Tydfil, Glamorganshire, and educated at Cyfarthfa Castle School, City of Coventry College, and Southampton University. He began writing as a child, and after the Second World War he became a teacher before becoming a headmaster at Sussex.

3:00 p.m. THE TRIUMPHES OF ORIANA I Michael Lawton, an Englishman studying at Rice University, produced a series of programmes of English music. The treatment is linear and chronological, beginning with the Middle Ages in this programme,

4:30 p.m. GETTING THERE  
5:45 p.m. GULF COAST ACCESS  
6:00 p.m. LIFE ON EARTH

6:30 p.m. WAR FILE  
6:45 p.m. COMMUNITY SPEAK OUT  
7:00 p.m. NeWomeNews

8:00 p.m. MONTROSE - 1984 - a discussion of the area and where it's going in the future. A panel consisting of residents, business owners, architects and others concerned and involved with the future of Montrose gathered to scare you into thinking about this historic, exploited, energetic, magnetic, semi-integrated, polluted, beautiful, crazy bastard child of mother downtown. Produced by Eileen Hatcher at KPFT.

9:00 p.m. INDIAN MUSIC AND CULTURE with Anil Kumar  
10:00 p.m. THE CAPTIVE UNICORN capering for Kit Van Cleeve  
11:00 p.m. AIR WAVES - Desk Knives

THURSDAY  
**31**

3 a.m. DESERT ISLAND - ends, beginnings and middles

6:00 a.m. MANDY IN THE MORNING

9:00 a.m. QUODLIBET with Bob Kainer and Phil Cosgrove and Contemporary American Music including Jean Eichelberger Ivey's "Pinball," Hugh LeCaine's "Drip-sody," and John Cage's "26'1.1499" for a String Player".

11:00 a.m. LUNCH  
ON THE CORNER

1:00 p.m. REACTIONS

2:00 p.m. ARCHTYPE OF WHOLENESS IN RELATION TO FRAGMENTATION - C.G. Jung's treatise on the being of human, from the Pacifica Archives.

3:00 p.m. THE BRIARPATCH friends, music and talk

4:30 p.m. GETTING THERE

5:45 p.m. GULF COAST ACCESS

6:00 p.m. LIFE ON EARTH

6:30 p.m. WAR FILE

6:45 p.m. COMMUNITY SPEAK OUT

7:00 p.m. RADIO FREE AZTLAN: The Chicano viewpoint tonight looks at the culture and music of Aztlan.

8:00 p.m. THE EVENING PROGRAM see highlights

10:00 p.m. FREE MUSIC STORE: FRANK GARCIA, a singer of love songs and quef folk, will perform before the Store; the Choir from the Second Mount Olive Missionary Baptist Church will sing spirituals featuring soloists Adrain Swored (also on piano), Mrs. Annie Smith, John Humphrey, Larry MacKenzie, Rita Saddlewhite, and Brother Peter Smith, the leader of the assembly.

12:00 p.m. AIR WAVES - Days Daze

*Aquarian  
Weather  
Exchange*  
NEW: IN THE GRASS HUT  
1200 W. ALABAMA

BELTS  
PURSES  
POUCHES  
REPAIR WORK -  
ALL YOUR  
LEATHER NEEDS  
MADE TO SATISFY

A COLLECTION OF  
WORKS BY *MARUM*  
PHONE 526-7352

32 PAGES OF ARTWORK & POETRY - \$1.25

SPECIALIZING IN EUROPEAN 10 SPEEDS  
QUALITY BIKES AT THE FAIREST PRICES  
1500 W. ALABAMA 529-7297

**HONEST  
THREADS**

\* NEW & USED JEANS - COSTUMES - RAGS  
DRESSES & SHIRTS FROM INDIA  
REDUCED SUMMER TOPS FROM \$1.00  
OLD COTTON DRESSES FROM 50¢

506 Westheimer 522-4811

**FERNDALE POTTERY WORKSHOP**

• HANDCRAFTED DINNERWARE, SCULPTURE, ETC.  
• WORKSHOP CLASSES...WEAVINGS... & MORE...  
• 2902 FERNDALE • 528-2796 • 9-5 MON. - SAT.

**Tortilla Flat**  
918 Welch 528-3220  
open 11am-7pm

**Howties**  
506 Westheimer

# PACIFICA

Listener-sponsored Radio in Houston  
618 Prairie  
Houston,



NON-PROFIT ORG.  
U.S. POSTAGE  
PAID  
HOUSTON, TEXAS  
PERMIT NO. 9273

D0230 PACI	G 0175W
PACIFICA	6
2217 SHATTUCK AVE	
BERKELEY CA	
94704	

**address correction requested**

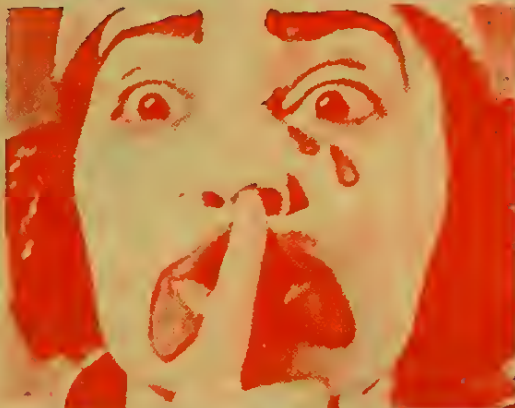
## How long has it been since you had a

The first time for anything is always the best, isn't it? There's a magic, an unforgettable aura concerned with the first time we discover a new experience. There's a lot of that kind of magic floating around Pacifica these days: many people doing and learning and growing and being involved, many of them for the first time. However, there are still some people who feel they don't have the time or energy to help or maybe they don't believe that such a radio station can exist. A station that offers open mikes for the public, a collage of news, views, and all kinds of beautiful music, things that can't and won't be found elsewhere but that should be heard. Whatever the reasons, if you are one of those people who care but can't do it in person, there is a way you can help, through your financial aid. Subscribe now or get a friend to.

Here are the various ways:

### (1) THE EXALTED ORDER OF THE BIRD

At this top level of sponsorship, \$250 a year, you provide a sustaining, major base



## first time?

NAME \_\_\_\_\_  
 ADDRESS \_\_\_\_\_  
 CITY \_\_\_\_\_ STATE \_\_\_\_\_  
 ZIP \_\_\_\_\_

### TYPE OF SUBSCRIPTION:

- EXALTED ORDER OF THE BIRD/\$250
- FIVE BUCK CLUB/\$60
  - \$60 enclosed
  - \$5 enclosed, bill me \$5 a month
- REGULAR/\$30
  - \$30 enclosed
  - \$5 enclosed, bill me five more months
- SALT OF THE EARTH/\$15
  - \$15 enclosed
  - \$5 enclosed, bill me two more times

for Pacifica. In addition to our undying gratitude, you get the Silver Bird pin for meritorious community service, and, of course, the Amazing Radio Guide.

### (2) THE FIVE BUCK CLUB

This is the mainstay of the station. Those who can, pay \$60 in full per year, sustaining, and those who can't, pay \$5 a month. When \$60 has been paid into the club, the donor receives a signed and numbered etching by Houston artist Bob Fowler, and the monthly Radio Guide.

### (3) REGULAR

The place where most working folks fit in, the un-silent majority. For \$30 a year, payable in installments if you like, you become a trusted and admired citizen of the realm and also get the Radio Guide every month.

### (4) SALT OF THE EARTH

For students, retired or unemployed persons, or enlisted members of the armed forces. A mere \$15 a year, in installments if that's easier, and you'll receive the Radio Guide.