

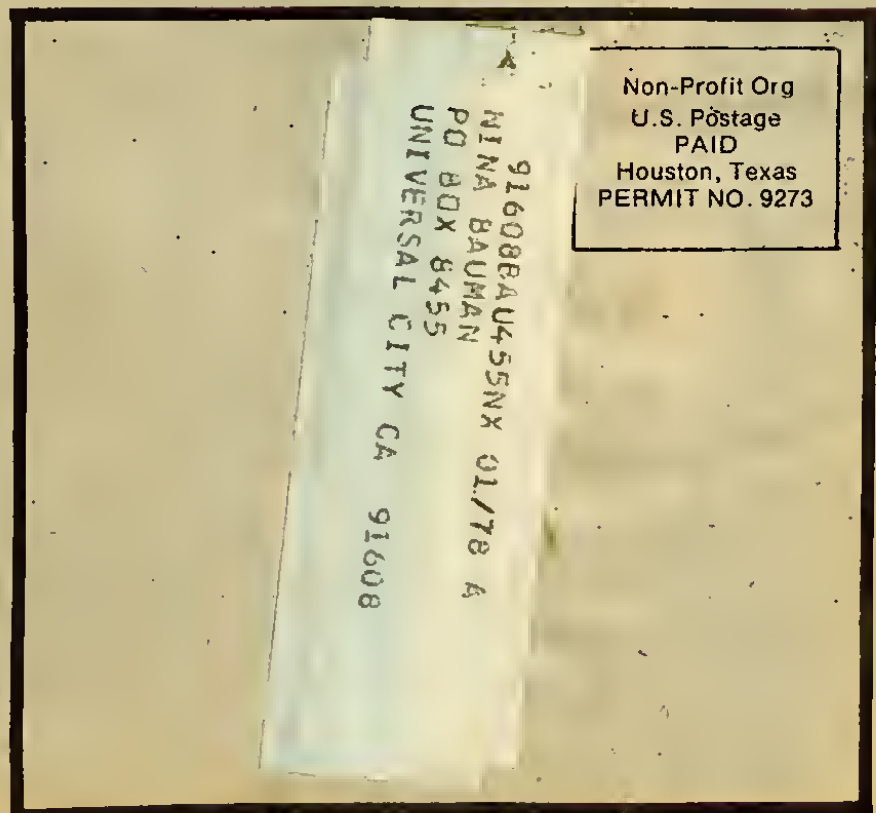


**JAN.
1978**

PROGRAM GUIDE

Inside This Issue:

- All-new program calendar***
- Complete program notes***
- Francis Martin on Distant Listening***
- Good news from the Manager!***
- Why KPFT's staff may have to Drink a Brick!***



Program Notes

Night song



Manager's Report

KPFT continues to refine its internal organization by filling staff positions that will result in expanded and improved services to its listeners. Rick Kendall is hard at work making sure that every KPFT listener-supporter receives one and only one program guide. Betty Maldonado is making sure that the programming that we promise you gets on the air at the time it's scheduled. Laura Rossen has taken over as Volunteer Coordinator. She and Pat Daly are expanding our regular production classes and making it easier for volunteer participation in station operations. Hobart Taylor III is busy directing energies so that news and information continues to be heard on the station. We hope you enjoy some of the changes you'll be hearing in that area.

This month, we are telling more people about KPFT. Igor Alexander has been putting the finishing touches on a campaign to increase Houston's awareness of the station. Before the end of January, many people will see KPFT on billboards, bumper stickers and t-shirts. KPFT program notes are already making regular appearances in other publications in the area.

Our engineering department, led by Frank Martin, has been making Saturday trips to the transmitter where they join volunteers in shoveling away a good sized chunk of Mt. Houston to make room for our new 100 kilowatt transmitter.

I'm busy looking for a new Program Director since the departure of Dave Rickmers at the end of December. I'm also helping the board in its search for new candidates for the KPFT Advisory Board.

We hope you hear the difference as KPFT reaches out to the Houston area. Your comments and suggestions are always welcome. Thanks for your continued support.

Mike August
General Manager



Sirens

The Creative Connection

Are you aware that KPFT has "connections"? We are referring to "The Creative Connection" that bursts forth on the air waves each Friday morn from 11 till 12.

The host personality who puts this package into orbit every week is a composite of the creative qualities he probes for in his guests. He is performing poet Kenneth R. Petrucci, who, among other things, is author of a book of poems, "Soul's Eye", and founder and teacher of the seminar "Creative Living" using the A.S.C. method. As a popular interviewee, himself, for the various media (newspaper, radio, and television, locally and nationally) he performs equally well when he "turns the tables" and becomes the interviewer on "The Creative Connection."

Petrucci intermixes psychology and philosophy, a lot of hilarity and a bit of high jinks along with sincerity and sensitivity in setting the mood for interviewing his carefully chosen guest celebrities of local and national repute. He is particularly adept at mining their imaginative minds for the little nuggets of creativity that makes them shine in their respective fields of performance.



January is music and information month on *Sirens* with a variety of music and moods by women artists. *Sirens* is incorporating a new service on the program—a women's calendar with information on such things as referral services for women; where to go for pregnancy tests and abortions; and where the battered woman may obtain help.

January 4

1920's-1950's; music by women artists of the era.

January 11

Blues & Jazz; a brief musical history of the women in this field.

January 18

Folkmusic; focusing on women artists of the 60's.

January 25

Chicano music; plus progress of the Chicano woman of today and exercises with Sasha.

Sasha's Slots

9-11 am Monday: "Monday Mornings" featured artist with Rich and Sasha. Each Monday Rich and Sasha will feature a different artist or group. This will be anything from rock to classical and will vary each week.

10:45 am Tuesday: "Time Out With Sasha". This continues to be faster more energetic and tougher TM.

10:45 am Thursday "Time Out With Sasha" This program studies various meditation techniques, touching yoga, transcendental meditation and zen, as well as incorporating slow complete series of movements designed to exercise you subtly but thoroughly.

Wednesday 8-10 pm: *Sirens* 9:00 pm last week of month. Sasha brings you a combination of both the above techniques.

Send a friend a gift subscription to KPFT. The gift is 100% tax-deductible and will insure a one-year supply of the monthly KPFT Program Guide. The Guide enhances enjoyment of KPFT's broad spectrum of broadcast material at least 378% (that's our most conservative estimate. It could easily go twice that.)

Please send a gift subscription in my name to the person below. I am enclosing:

- \$25.00—One year regular subscription.
 \$15.00—One year subscription. I cannot afford more as I am a student, unemployed, or low-income.

My name is: _____

My address is: Street _____ City _____

State _____ Zip _____

Please send the gift subscription to:

Name: _____

Address: Street _____ City _____

State _____ Zip _____

**Program
Notes
Continued**

Mbari-Mbayo

Mbari-Mbayo is our NPR program devoted to African and West Indian music and information, aired every Friday from 9:00 PM till 10:00 PM. The title, *Mbari-Mbayo*, is in the Yoruba language of Nigeria. Literally translated, it means "If I see it, I will be happy." Used in the context of this program, it means "The knowledge and the understanding of other people's culture could make one a better person."

January 6

SPECIAL CHRISTMAS MUSIC—Godwin Oyewole recounts his experiences as a child in Nigeria during Christmases past. Christmas carols played on steel drums and calypso songs about Christmas are also featured in this special program.

January 13

AFRICAN RELIGIOUS MUSIC—One of the enduring aspects in the life of Black people in the Western Hemisphere is the retention of the major aspects of African religions amongst the Black people of African descent in such places as Cuba, Jamaica, Brazil and Trinidad & Tobago. On the program we will hear current African religious music from the Western Hemisphere.



The Third World Experience

A cultural experience intermingled with Reggae, Salsa, Asian, African and Latin Music.

The Third World Experience is a presentation about life, culture, news and music of The Third World. Dedicated to the Decolonization of the globe; bringing the far reaching cultures of The Third World a step closer through the vehicle of mass communication. Understanding through interaction to AGAIN reveal The Third World as The First World.

January 7

Profile: Gil Scott-Heron/Brian Jackson (The Midnight Band) If anyone should ask: What was happening, "The First Minute of A BRAND NEW DAY?"... simply reply, "The Midnight Band."

January 14

Feature: Love and Marriage in The Third World

January 21

Profile: Dick Gregory (Collective Works)

January 28

Feature: Inner City Blues

**Folk Festival
U.S.A.**



Folk Festival offers sound portraits in a "live-on-tape" format from folk music events and gatherings across the country. The series, hosted by NPR's Steve Rathe, samples the variety of American traditional, ethnic, and contemporary folk music.

January 5

THE FIRST ANNUAL FESTIVAL OF AMERICAN OUTTAKES—From our shelves and the back room comes a holiday package of many of the goodies we've been saving over the months: performances that were either too long or too short to fit into their various festival programs (though it broke our hearts to leave them out), and a few gems we've found in otherwise undistinguished tapes. Sure to be heard are the Balfa Brothers, Pete Seeger, traditional gospel music, and lots more. Steve Rathe hosts.

January 12

THE 17th UNIVERSITY OF CHICAGO FOLK FESTIVAL—Even the great blizzard of '77 couldn't prevent the University of Chicago Folklore Society from staging their annual event to a sold-out house. Frozen noses and toes soon thawed by the warmth inside Mandel Hall, and the glow spread to the heart as performers like "Mama" Estella Yancy, Henry and Vernell Townsend, and Blind John Davis sang the blues. Also featured are Mexican harpist Melicio Martinez, West Virginia old-timey fiddler Melvin Wine, the Morgan Brothers with Mark O'Connor, and the Golden Voice of the Great Southwest, U. Utah Phillips. Steve Rathe hosts.

January 19

THE 17th UNIVERSITY OF CHICAGO FOLK FESTIVAL (PART II of II): Neither snow nor sleet nor a wind-chill factor of eighty below could keep music-lovers away from this annual festival, held every January for the past seventeen years on the University of Chicago's campus. Mandel Hall was easily kept warm by the capacity crowd and by the musicians who performed for them—musicians like Carl Perkins, U. Utah Phillips, and the Red Clay Ramblers. Also featured on this program are New York-based boogie-woogie pianist Sammy Price, cowboy singer Glenn Ohrlin, and classic banjo-player John Sloane—who delighted the audience by playing his home-made folding banjo. Steve Rathe hosts.

January 26

THE SOUTHERN UTAH FOLKLIFE FESTIVAL (PART I of II): From Zion National Park in Utah, Folk Festival U.S.A. presents this unique look at the customs and traditions of the people who inhabit the Salt Lake state. The Mormons who first settled this rough country near the Rio Virgen River give their special color to the story of Southern Utah. Along with music from Bella Turner and members of the Paiute Tribe, will be wart-charming lessons from Onie Ruesch, meat-curing and molasses-making techniques by Carl Rounder and Daniel Winder, and pioneer cures offered by Lena Wilcox. Steve Rathe hosts. (Produced by Lucas Hess and KUER.)



**Embrace
the
Earth**



Embrace The Earth is a weekly program broadcast each Wednesday from 8:00 till 10:00 PM. Produced here at KPFT by the Environmental Task Force, it deals with questions of ecology, human health and quality of life, pollution, corporate social responsibility, land use, and natural history; issues affecting the Houston area, the state of Texas and the entire world.

January 4

The potential explosiveness of Liquid Natural Gas both as a product and as an issue will be explored by Dr. David Marrack. The LNG terminal at Matagorda Bay, Texas has implications for us all.

January 11

Ann Hartley presents a guide to the many and varied environmental groups in the Houston area.

January 18

Wilderness Preservation: Texas is the nation's third most populous state, yet it has no areas under the protection of the National Wilderness Act. At present, moves are underway again to declare certain areas of East Texas national forest lands wilderness areas. But one obstacle, Congressman Charles Wilson will probably pervert or at least preempt this action. Tune in to find out why.

January 25

Alternatives To Growth: Another in the on-going series of programs based on the conference held recently at The Woodlands dealing with the need of the global community to change course, its industrial direction and its lifestyles in view of the depletion of currently usable energy sources. Lifestyle changes in the coming decades, the utilization and need for solar energy research are topics presented by conference speakers. Hosting is Loraine Elms.

**All Things
Considered**

All Things Considered is perhaps the best known of all of National Public Radio's programming. KPFT listeners who have lived in other cities are perhaps familiar with the *All Things Considered's* carefully balanced mix of news stories, light features, and in-depth analysis. January 2, 1978 marks the Houston debut of A.T.C.

All Things Considered is a modular program, so that any reports, group of reports, or group of reports and features can be extracted.

KPFT will broadcast the first half hour of *All Things Considered*, consisting mainly of hard news stories, and analysis.

Listen Monday through Friday, 4:00 p.m.-4:30 p.m., for this award-winning program.

**The
Renaissance**



The Renaissance is an example of New Wave classical music programming. This program, like all of the classical music heard on KPFT, is presented by people who know and deeply care about classical music. *The Renaissance* is dedicated to helping us all expand our musical horizons; to help us all achieve a cultural rebirth—a renaissance. Using the music of the European Renaissance as a base, we will explore other times and cultures. Tom Bickley is the show's musical curator and host.

January 2

A Sampler with emphasis on the early. Your relevant suggestions are very welcome.

January 9

A Survey of music produced with bowed and plucked strings.

January 16

Vocal music from Korea, South India, the Middle East, and Medieval Europe.

January 23

A Recital of Harpsichord and Clavichord; Eiji Hashimoto, Harpsichord. (From NPR)

January 30

Windy Things—A title suggested by singer Sharon Sanford. Recorders and crumhorns and other such creatures.

**KPFT NEEDS
YOUR
VOLUNTEER
SKILLS!**

**Attention
Volunteers!!**

**WORKSHOPS WILL BEGIN IN
FEBRUARY ON:**

**NEWS
MUSIC
ENGINEERING
PRODUCTION
VOLUNTEER RELATIONS
VOLUNTEER ORIENTATION
PROGRAM GUIDE*
ADVERTISING**

*The Program Guide is in need of a dedicated person(s) to organize the mailing of the newspaper on a monthly basis.

**jazz
alive**
FRIDAYS
at 10 pm



**National Public Radio's
weekly showcase of jazz in performance**

...And More Program Notes



Two-Way Radio

On Monday evenings at 7:00 o'clock KPFT's Two-Way Radio program is hosted by Jack Drake. During recent weeks Jack has talked with several members of the Houston community, including members of the League of Women Voters; Nikki Van Hightower; Donna Duerk of the Harris County Women's political caucus, and representatives of the Harris County Child Welfare Association. January promises to be every bit as interesting with people from the Houston community stopping by to talk and answer questions from listeners. Your participation is invited. Call in at 526-4000.

Tuesday evening, 7:00-8:00 p.m. is hosted by Jack Woods. In recent weeks Jack has spoken with Marvin Zindler, Jim Calaway of the A.C.L.U. and a variety of political candidates. While most of the guests on Tuesday's Two Way Radio program involved in the Houston political scene, every now and then we'll throw in a surprise. Again your participation is urged at 526-4000.

On alternating Thursday evenings in January, beginning January 12, and again on January 26, attorneys from the American Civil Liberties Union will be in the KPFT studios to discuss various civil rights issues and to answer your questions concerning the law. Patti O'Kane, Michael Maness, Gerald Birnberg, and Glen Van Slyke are just some of the attorneys to visit the studios in recent weeks.

Jack Hopper, economist and author of "The Southwest Utility Watch" hosts "Two-Way Radio" on alternating Friday evenings, at 7:00 o'clock beginning on January 13th. Jack brings news and information concerning energy related issues. In recent weeks Jack's guests have included Emmy Lou Crawford and Clarence Johnson. Your questions and comments regarding consumer issues, utilities in Texas, etc. are encouraged.

Life On Earth

Long called "Houston's comprehensive news program" *Life on earth* will bring another month's worth of news all of next month, from 6 to 7:00 pm weekdays.

Comprehensive means that we'll not only tell you what happened, but we'll tell you in such a way that it makes sense. Rather than throw together five minutes of headlines announcing body counts like football scores, and little old ladies in England who rob banks, KPFT's crack (if understaffed) news team tells you the story of the day, for one full hour, with reports from the best news feed services, local reporters and stringers.

Aztlan

With the purpose of serving Houston's 250-300,000 Chicano and other Spanish speaking residents, "Aztlan" is one of KPFT's newest additions in bilingual programming. Hosted by Ms. Betty Maldonado and Mr. Lorenzo Cano; "Aztlan" is quickly establishing itself as a voice for the Houston Chicano/Latino community. With a combination of Chicano/Latino music, current events, interviews and social commentary Aztlan packs a heavy hour from 3 to 4 p.m. every Saturday. According to Ms. Maldonado, "The need to establish a program dedicated to the public interest of the Houston Spanish-speaking community has been felt for quite some time. Through "AZTLAN" we hope to establish a vehicle whereby KPFT can demonstrate its commitment to the area's fastest growing ethnic minority."

According to Cano, "A major problem in local Chicano/Latino programming, particularly in news, is that stations rarely cover Chicano events outside of Houston, much less outside of Texas. The failure of local stations to serve as a network for national Chicano news dissemination hinders the social awareness and overall intellectual development and growth of the Chicano community. *Aztlan* is a small effort to change that."

Already, a local committee has been established to serve as advisors and consultants for "Aztlan's" programming. In addition, Cano and Maldonado are initiating an exchange of recorded programs and interviews with other similar programs throughout the country.

Regarding its selection of music, Maldonado gives the following description, "Although we play quite a selection from Mexico as well as music from other Latino countries we place emphasis on what is considered to be "la Onda Chicana" with groups such as The Royal Jesters, La Familia, Unidos, Latin Breed, etc. These as well as others such as the accordion sound of Steve Jordan, Tony De La Rosa, and Conjunto Bernal are top priority for *Aztlan*. We want to demonstrate to the world the beauty in Chicano music"

January 7
Hugo Blanco, an Author, Journalist, Lecturer and Peasant Union Organizer from Peru will talk about the oppressions suffered by the masses in Latin America. Sr. Blanco's theme will be "Carter and human rights in Latin America: Myth vs. Reality".

January 14
Betty Maldonado presents a recorded interview with "Roberto Flores Villareal, a curandero from Rio Bravo, Mexico. Sr. Flores will speak on his many experiences with healing and his travels and encounters with other entities.

January 21
AAMA. *The Association for the Advancement of Mexican Americans.* We will be exploring the different aspects of what AAMA is and the different projects that they are undergoing.

January 28
Aztlan will interview members of the *Raza Unida Party*. Learn about how and why the Raza Unida was formed and what their plans are for the coming year.

Beginning in January *Aztlan* will be featuring five minute segments of Interviews, speakers and much more three times a week between 4:30pm-7:30pm. Stay tuned for more information. If you have any comments about "AZTLAN" write us at the KPFT Studios.

Arts In Houston

Is art life? Is short long? Is Karlheinz Stockhausen in Houston this month? If you know the answer to any of these questions then you must listen to KPFT's Tuesday night fine arts talk show. During its course Robert Kainer and Tom Bickley will interview visual, aural, theatrical and other artists. Phone participation (526-4000) is required.

International Concert Hall



The International Concert Hall will present the finest full orchestral and operatic performances selected from offerings by the European Broadcasting Union and various domestic sources. It is broadcast every Wednesday morning from 9:00 AM until 12:00 noon.

January 4
R. STRAUSS: Festive Prelude for the Inauguration of the Vienna Konzerthaus (Marilyn Mason, organ)
FERDINAND RIES: Violin Concerto in E (Aaron Rosand, violin)
(Intermission Interview with Aaron Rosand)
CHRISTIAN SINDING: Rondo Infinito, Opus 42
ANATOL LIADOV: "From the Apocalypse", Opus 66
ALEXANDRE GUILLMANT: Symphony No. 1 for Organ & Orchestra, Opus 42 (Marilyn Mason, organ)
Butler University Symphony Orchestra
Igor-Buketoff, Conductor
MAX VON SCHILLINGS: "Glockenlieder" (Songs of Bells), Opus 22 (Peter Anders, tenor)
Prussian State Orchestra Robert Heger, Conductor

January 11
VIRGIL THOMPSON: Fanfare: A Portrait
MOZART: Violin Concerto No. 5, K.219 (Zino Francescatti, violin)
NED ROREM: "Air Music" (10 Variations for Orchestra) (Bicentennial Premiere)
SMETANA: "Sarka" from *Ma Vlast*
Cincinnati Symphony Orchestra Thomas Schippers, Conductor
BEETHOVEN-WEINGARTNER: "Hammerklavier" Sonata
Royal Philharmonic Orchestra Felix Weingartner, Conductor

January 18
TADEUSZ BAIRD: 4 Novelettes
MOZART: Piano Concerto No. 21, K.467 (Radu Lupu, piano)
DVORAK: Symphony No. 8, op. 88
Berlin Philharmonic Orchestra, Bernhard Klee, conductor
SIBELIUS: Pohjola's Daughter, op. 49
Finnish Radio Symphony Orchestra, Okko Kamu, conductor

January 25
EMMANUEL NUNES: "Ruf" for orchestra and tape.
HENRYK MIKOLAJ GORECKI: Third Symphony (Stefania Woytowicz, soprano)
Sudwestfunk Symphony Orchestra, Ernest Bour, conductor
(This is one of three concerts this first quarter of 1978 featuring the Sudwestfunk Symphony Orchestra, perhaps the only symphony orchestra in the world performing only contemporary symphonic music)

N P R Recital Hall

Every Tuesday morning, from 9:00 AM till 12:00 noon, National Public Radio's Recital Hall presents Classical performances of small chamber ensembles, and recital concerts featuring single artists or small groups.



January 3

MESSIAEN: *La Nativite du Seigneur*
Theodore Gillen, playing the Holtkamp organ at St. John's University and Abbey Church, Collegeville, Minnesota
HAYDN: Six English Songs: The Mermaid's Song, She Never Told Her Love, The Spirit's Song, Fidelity, My Mother Bids Me Bind My Hair, and The Sailor's Song. (Jennis Tourel, mezzo-soprano; Ralph Kirkpatrick, pianist-Challis Reproduction)
SCHUBERT: Seventeen German Dances called "Landler", D. 366
SCHUBERT: Twelve Ecossaisien, D. 299 (Stewart Gordan, pianist)

January 10

TELEMANN: Trio Sonata in C
BLAVET: Sonata No. 4 (for flute & harpsichord)
J.S. BACH: Trio Sonata in G, BWV 1038
MARTINO: Cinque Frammenti Heritage Chamber Quartet
SATIE: Premiere Gymnopedie
GLENN SMITH: Three Pieces
FALLA: *Hommage a Debussy*
N.H. DERWYN HOLDER: Sonatina in One Movement
LARRY SNITZLER: Reminiscences Upon a Study of Fernando Sor
RALPH TUREK: Abstract
ANTONIO RUIZ-PIPO: Estancias
VILLA-LOBOS: Four Etudes Larry Snitzler, guitar

January 17

RESPIGHI: Sonata in b, for Violin and Piano
YSAYE: Sonata in a, op. 27, no. 2, for Solo Violin
KREISLER: Caprice Viennois; Schon Rosmarin; Liebeslied; Tambourin; for Violin and Piano
R. STRAUSS: Sonata, op. 6 for Violoncello and Piano
Aaron Rosand, violin; Jascha Silberstein, cello; Joseph Seiger, piano
(This concert was recorded as part of the 1977 Butler University Romantic Festival)

January 24

GAIL KUBIK: Five Theatrical Sketches (Divertimento No. 3)
The Johannes Trio (Paul Arnold, violin; Robie Brown, cello; Frederica Prior, piano)
JOSEPH FENNIMORE: Quartet (after Vinteuil); (PREMIERE)
Larry Guy, clarinet; Susan Winterbottom viola; Ted Hoyle, cello; Dennis Helmrigh, piano
JEFFREY KAUFMAN: Sonata for Clarinet and Piano (1975)
Larry Guy, clarinet; Dennis Helmrigh, piano

JAMES WILLEY: String Quartet (1976)
The Esterhazy Quartet (Eve Szekely, violin; Holly Stern, violin; Carolyn Kenneson, viola; Carleton Spotts, cello)
(This concert was given as part of the "Hear America First" series sponsored by Composers for People)

January 31

From *Buxheimer Orgelbuch*: "Praeludium super mi"
GIOVANNI MARIA TRABACI: Ricer-car
BERNADO PASQUINI: Partita sopra la Aria della Folia da Espangna
HAYDN: Moderato in B flat major, H:XVI
MOZART: Adagio in C major, K.356
C.P.E. BACH: Probestucke from *The True Art of Playing Keyboard Instruments*
Joan Benson, clavichord
(Recorded at the Folger Shakespeare Library in Washington, D.C.)
JOHANN FROBERGER: Suite No. 1 in A minor
RAMEAU: La Poule, Les Triolets, Les Cyclopes
PAUL MARTIN PALOMBO: Variants (1976)
SCARLATTI: Sonatas in B minor, K.27; C minor, K.56; A minor, K.148; A minor, K.149; F major, K.468; F major, K.469; G major, K.520; G major, K.521
Eiji Hashimoto, harpsichord

Weekly Schedule KPFT FM 90

Sunday

- 6:15 am: *The Glorious Qur'an*
- 6:30 am: *Ether Clearing*, with hostess Carrie Thornton. See program notes
- 8:30 am: *Islam Education Program*
- 9:00 am: *A Musical Trot With Liselott*, with hosts Liselotte Babin and Bob Babin. The January 1 show will be devoted to winners of the 1977 Houston Hit Parade of New German Pop Tunes.
- 12:00 noon: *Gypsy Caravan*, with musician/host Greg Harbar.
- 1:00 pm: *Mosaico Musicale*, with hostess Sylvia Cavasos. Music from all of Latin America.
- 3:00 pm: *Free Music Store*, with host Jim Bob Barnett. Occasional live broadcasts from our studios and other musical hi-jinks.
- 6:00 pm: *Weekend Blowout*, with Buffalo Chip Bob and The Chief.
- 9:00 pm: *Nightsong*, with host Ed Badeaux. See program notes.
- 12:00 midnight: *Two-Way Radio*
- 1:00 am: *Sam Russell Show*.
- 3:00 am: *Eye of Day*, with host Art Gnuvo.

Monday

- 6:00 am: *Beginnings*
- 6:15 am: *The Glorious Qur'an*. See program notes.
- 7:45 am: *BBC Newsreel*
- 8:00 am: *NPR Morning News*
- 8:05 am: *Best of Life on Earth*
- 8:30: *Music and Variety*
- 9:00 am: *Monday Mornings* with Sasha and Rich King. See program notes.
- 11:00 am: *Voices In The Wind*, with Oscar Brand. Award winning arts interview series from NPR.
- 12:00 noon: *Noon News* (With National Press Club luncheons live and direct from Washington as they occur.)
- 12:20 pm: *Spanish-language News*, unless pre-empted by Press Club luncheon.
- 12:30 pm: *Political Commentary* from Washington, D.C. *Jazz Progressions*, with Lawrence Jones. See program notes.
- 2:00 pm: *All Things Considered*, news from NPR.
- 4:00 pm: *In One Ear*, KPFT's magazine of the air.
- 4:30: *Life On Earth*, news of the day compiled by the KPFT News Collective.
- 7:00 pm: *Two-Way News*, interviews with people in the news followed by questions from listeners
- 8:00 pm: at 7:30. *The Renaissance*, with host Tom Bickley. See program notes.
- 10:00 pm: *Folksay*, with Joseph F. Lomax and Halley Wood.
- 12:00 midnight: *Midnight News Update Live and Direct from Outer Space*, with Frank Martin and Doug
- 1:00 am: *Two-Way Radio*. Calls from listeners.
- 2:00 am: *Dark of Light*, with Bruce Litvin. Music variety.
- 3:00 am: *Eye of Day*, with D.J. Theodore J. Clark. Music variety.

Tuesday

- 6:00 am: *Beginnings*
- 6:15 am: *The Glorious Qur'an*. See program notes.
- 7:45 am: *BBC Newsreel*
- 8:00 am: *NPR Morning News*
- 8:05 am: *Best of Life on Earth*
- 8:30 am: *Music and Variety*
- 9:00 am: *Recital Hall*, from National Public Radio. See program notes.
- 10:45 am: *Time Out With Sasha*, energetic exercises with our resident Terpsichorean. See program notes.
- 11:00 am: *Conversations*, with Sasha or Seeger Carbaljal. Interviews with artists or lectures on art history.
- 12:00 Noon News
- 12:20 pm: *Spanish-language news*
- 12:30 pm: *BBC Science Magazine*
- 2:00 pm: *Jazz Progressions*, with Lawrence Jones.
- 4:00: *All Things Considered*, news from NPR.
- 4:30 *In One Ear*, KPFT's magazine of the air.
- 6:00: *Life On Earth*, news.
- 7:00 pm: *Two-Way Radio*, with Gulf Coast Gadfly and Hides Inspector Jack Woods.
- 8:00 pm: *Houston/World*. See program notes.
- 9:00 pm: *Arts in Houston*, with Tom Bickley and Bob Kainer. See program notes.
- 10:00 pm: *Avant/Garde*, with Scott Sommers. See program notes.
- 12:00 Midnight News Update
- midnight: Live and Direct from Outer Space, hosted by the KPFT Space-Case Collective.
- 1:00 am: *Two-Way Radio*
- 2:00 am: *The Hi-Fi Show*, brought to you by the Hi-Fi Collective. See program notes.
- 3:00 am: *Al Vaughn's* music show.

Wednesday

- 6:00 am: *Beginnings*
- 6:15 am: *The Glorious Qur'an*. See program notes.
- 7:45 am: *BBC Newsreel*
- 8:00 am: *NPR Morning News*
- 8:05 am: *Best of Life on Earth*
- 8:30 *Music and Variety*
- 9:00 am: *International Concert Hall*, with host Ted Viens. See program notes.
- 11:00 am: *In Touch With The Universe*, with hostess Joanne Cusack.
- 12:00: *Noon News*
- 12:20 pm: *Spanish-language news*
- 12:30 pm: *Best of KPFT*
- 2:00 pm: *Jazz Progressions*, with Lawrence Jones.
- 4:00: *All Things Considered*, news from NPR.
- 4:30: *In One Ear*, KPFT's magazine of the air.
- 6:00: *Life On Earth*, news.
- 7:00 pm: *Manager's Report*, with Michael J. August. See program notes.
- 8:00 pm: *Embrace The Earth*. See program notes, page 2, column 3.
- 10:00 pm: *Sirens*, with the Women's Collective. See program notes.
- 11:00 pm: *Wilde 'N Stein*, with Houston Human Rights League director Ray Hill.
- 12:00 Midnight News Update
- midnight: Live and Direct from Outer Space.
- 1:00 *Two-Way Radio*
- 2:00 am: *TV In Yer Radio*, with host Art Gnuvo.
- 3:00 am: *Solo Flight*, with a variety of fledgling DJ's.

Thursday

- 6:00 am: *Beginnings*
- 6:15 am: *The Glorious Qur'an*. See program notes.
- 7:45 am: *BBC Newsreel*
- 8:00 am: *NPR Morning News*
- 8:05 am: *Best of Life on Earth*
- 8:30 *Music and Variety*
- 9:00 am: *Folk Festival USA*, with host Ted Viens. See program notes.
- 10:45 am: *Time Out With Sasha*. Slow exercises. See program notes.
- 11:00 am: *Options In Education*, an NPR series dealing with current developments in pedagogy.
- 12:00: *Noon News*
- 12:20 pm: *Spanish-language news*
- 2:00 pm: *Jazz Progressions*, with Lawrence Jones.
- 4:00: *All Things Considered*, news from NPR.
- 4:30: *In One Ear*, KPFT's magazine of the air.
- 6:00: *Life On Earth*, news.
- 7:00 pm: *Two-Way Radio*. This Thursday slot alternates each week between guests from the A.C.L.U. and Brent Northup's program *Film Thoughts*. See program notes for information.
- 8:00 pm: Paul Yeager's *Classical Music 'Round the World*.
- 10:00 pm: *Grand Piano*, an exciting new series from NPR, beginning January 19. See program notes.
- 12:00 Midnight News Update
- midnight: Live and Direct from Outer Space.
- 1:00 *Two-Way Radio*
- 2:00 am: *TV In Yer Radio*, with host Art Gnuvo.
- 3:00 am: *Solo Flight*, with a variety of fledgling DJ's.

Friday

- 6:00 am: *Beginnings*
- 6:15 am: *The Glorious Qur'an*. See program notes.
- 7:45 am: *BBC Newsreel*
- 8:00 am: *NPR Morning News*
- 8:15 am: *Best of Life on Earth*
- 8:30 *Music and Variety*
- 9:00 am: *Alexandria Quartet*. Readings from Lawrence Durrell's four-volume series. Currently reading a chapter a week from the volume entitled *Justine*.
- 10:00 am: *Berner on Broadway*. See program notes.
- 11:00 am: *The Creative Connection*, with poet/host Kenneth R. Petrucci. See program notes.
- 12:00: *Noon News*
- 12:20 pm: *Spanish-language news*
- 2:00 pm: *Jazz Progressions*. See program notes.
- 4:00: *In One Ear*, KPFT's magazine of the air.
- 4:30: *All Things Considered*, news from NPR.
- 6:00: *In One Ear*, KPFT's magazine of the air.
- 7:00 pm: *Two-Way Radio*, with weekly alternating hosts.
- 8:00 pm: *Crystal Egg*. Live local folk musicians
- 9:00 pm: *Mbari-Mbayo*, NPR's African and West Indian program. See program notes.
- 10:00 pm: *Jazz Alive!* Recordings of jazz performances around the country
- On the first Friday of each month KPFT pre-empts *Jazz Alive!* to bring you live and direct coverage of Poetry Night at Houston's Bowles Auction House.
- 2:00 *Midnight News Live and Direct From Outer Space*.
- 1:00 am: *Two-Way Radio*
- 2:00 am: *Modern Music*, with DJ Theodore J. Clark.
- 3:00 am: *Eye of Day*, with host H.H. Von Dill.

Saturday

- 6:15 am: *The Glorious Qur'an*
- 6:30 am: *Ether Clearing*, with host Francis Martin. See program notes.
- 8:30 am: *Children's Program*, produced at KPFT by De Profundis, Inc.
- 9:00 am: *Bluegrass Express*, with host Tony Ullrich. Houston's only bluegrass and fiddle radio program.
- 12:00 noon: *Music of India*, with hostess Meena Datt. Contemporary music, news, and reviews from the Indian sub-continent.
- 1:00 pm: *Mosaico Musicale*, with hostesses Sylvia Cavasos and Maria Elena Rosquete.
- 3:00 pm: *Aztlan*, news for Mexican-Americans with hosts Betty Maldonado and Lorenzo Cano. See program notes.
- 4:00 pm: *Third World Experience*. See program notes.
- 6:00 pm: *Buffalo Chip Bob and the Chief*. Music to stage a weekend blow-out by.
- 9:00 pm: *Music Magic*
- 12:00 midnight: Brian Pinette's *Radio Drama*.
- 12:30 am: *That Little Ol' Show That Follows Monty Python*. A simulcast with station KPRC (Channel 2).
- 1:00 am: *Modern Music*, with host Theodore J. Clark.
- 4:00 am: *The Morning-After Show*, with various DJ's.

Who's listening to KPFT?

FM Radio DX-ing

by Francis Martin

Every eleven years, the blue planet Earth is flooded with higher levels of solar radiation from storms occurring on the surface of the star Sun. The sunspot cycle is now near its peak during these 1977-78 seasons. This peak causes an increase in activity pallid and insignificant in comparison among certain members of the race of Man known as "Radio DX-ers." "DX" is a form of radio buff shorthand for "Distant Listening", and Distant Listening in turn means receiving radio and television signals beyond the limits of the normal, legally sanctioned listening area. The sunspot cycle has increased the activity level of those "DX-ers" who watch for television and FM-bandwidth signals. The popularity of FM DX-ing has become apparent at KPFT in the past several months with the appearance in the station's mail of DX-er requests for "QSL cards". A QSL card is a request for verification of reception. It ranges from a simple printed card stating only that the listener heard a station with such-and-such call letters, to descriptions of programs heard, to actual tapes of broadcasts. The QSL cards at KPFT recently have borne return addresses of such exotic locales as Kitchener, Ontario, Canada, places in Arkansas, and one document in what appears to be Japanese that is as yet undeciphered and obviously of extremely distant origin.

To envision how reception of KPFT, or any FM station, is possible over such great distances, one must imagine the path taken by the magnetic flux of the transmitter as it travels from the antenna to your receiver. The circularly polarized antenna at our transmitter radiates electro-magnetism vibrating at a center of 90.1 million times per second in a spherical pattern. The best reception exists in areas that lie in a straight line-of-sight between the transmitter and the receiving antenna. When obstacles are encountered, the signal can be bounced off. As it skews in all directions, it causes problems with reception because a direct and reflected signal cancel each other out at the receiver whenever the two signals intersect. This is known as "multi-path" reception. Reflected and atmospheric multipath can cause problems in the primary coverage area.

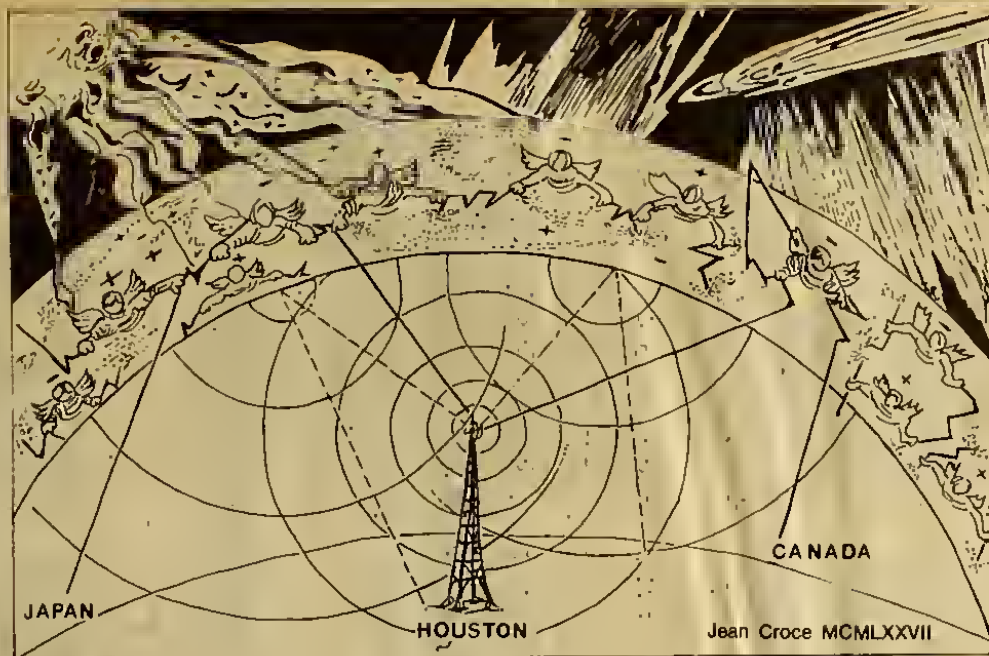
Noise from other signals in adjacent bandwidths and "cosmic noise" from the galaxy can also cause problems in reception. However, it generally takes little more than experimenting with your antenna to get excellent reception of an FM signal like KPFT's if your receiver has adequate "image rejection". An image rejection circuit in the receiver prevents the radio from being "fooled" by nearby strong signals or intermediate frequency stage "mixes" occurring from time to time in receivers.

The distance to our radio "horizon", the distance at which the Earth curves down and away from the direct line-of-sight reach of our transmitter antenna, is about 60 miles. That is the distance within which you can count on reliable reception with a minimal antenna and receiver.

Federal Communications Commission ratings allow for a certain amount of atmospheric bending of the signal and "frsnel" effects of the diffraction of Very High Frequency (VHF) signals. Thus, the FCC shows KPFT as having a one microvolt signal contour of about 90 miles. The most sensitive receivers have a sensitivity of 1.3 microvolts or more, so something else is happening to get our signal to Canada and Japan.

What is happening to throw our signal so far from the cozy confines of Southeast Texas is a variety of natural phenomena. The increased solar radiation occurring this year is one of the reasons, but there are other phenomena that can cause the effect. With references to the accompanying diagram, we hope to explain what those phenomena are.

FM radio, being VHF, generally goes out into Space with a minimum of bending and refraction, unless solar radiation makes something else occur. When the signal reaches the ionosphere, the region about 60 miles above the Earth's surface, it penetrates the "D layer". The D layer carries a charge only during daylight hours. The signal then goes through to the higher "E layer". The E layer contains irregular cloud-like areas of unusually high ionization. These clouds are called "Sporadic E" and may form for as much as half the time on certain days and nights. Spora-



Our Artist's Conception of the Upper Aethers and their Wondrous Influence upon the Electromagnetic Emanations of Our Transmitters.

dic E is the medium through which most long-distance reception occurs. (For those who know that long-distance "shortwave" transmission and reception depends on atmospheric bounce, the stable, underlying F layer is the one used.)

Depending on the amount of solar radiation absorbed by the ionosphere, there is a "critical" or highest frequency at which this layer of the atmosphere reflects a wave trying to leave the planet. For this critical frequency, known as the Maximum Usable Frequency or "MUF" to reach the area occupied by the FM band is somewhat rare. In fact FM "skip" occurs only several times annually. When they do occur, the openings are short lived as a general rule, but are so effective that a 3 kilowatt FM station can be heard without difficulty at a thousand miles or more.

While "Sporadic E skip" is the most widely known FM Distant Listening occurrence, there are other causes. The ionospheric charge of the Aurora Borealis or Northern Lights also ducts and reflects VHF signals in the areas where that spectacular phenomena occurs. Meteors streaking across the sky can also cause FM DX-ing to appear. When a meteor enters the atmosphere and burns up from atmospheric friction, it can cause ionization in the Lower E layer. The meteor creates a "column" of ionized air, creating the cloud necessary to duct VHF-bandwidth FM stations thousands of miles away.

Back in the troposphere, the name given by scientists to the relatively dense layer of air existing upon the Earth's surface, the far fringes of FM reception is also the haunt of the FM DX-er. Signal strength at 200 miles out requires adequate antenna height at the receiver, and perhaps more than one antenna separated

by 60 to 200 wavelengths. Two antennas insure that when the signal fades out on one antenna, it will fade in on the other.

Range in the troposphere is also limited by changes in the weather, since oxygen and water vapor may also absorb energy from radio waves due to the permanent electric dipole movement of the water molecule. Although, to seriously attenuate FM signals, rainfall rates exceeding an inch per hour have to be precipitating over an area larger than about four square miles.

Barometric pressure also plays a part in FM DX, with domes of high pressure usually being the best condition for DX reception. The higher pressure provides a clear path for the radio waves to the ionosphere. So, the higher the barometer, the more likely you'll get KPFT in Austin, San Antonio, Brownsville, and Lafayette.

FM DX-ers have organized the hobby of listening and watching for distant TV and FM stations. They form a club known as the "Worldwide TV-FM DX Association." The club provides a comprehensive and updating listing of FM stations useful for identifying the transmissions received. The listing is available for \$2.50 from: Dr. Bruce F. Elving Worldwide TV-FM DX Association, P.O. Box 24, Adolph, Minnesota, 55701.

Generally, most stations respond to requests for verification of DX receptions if the report is correct as far as program content, date, and time. Scouring the FM band for fragments of modulation that have traveled hundreds or thousands of miles through the magnetic ether on the VHF bands will certainly gain in popularity as radio progresses. Try to tune into something far away today.



Everyone's talking... about British military jackets, sailor blouses & pants, French navy pen coats, leather flight jackets, army ponchos, fatigues, army trench coats, bomber jackets, paratrooper jumpsuits, white wool French scarves, corduroy breeches and more. Plus vintage clothing from the thirties, forties and fifties. Come enjoy.

contagious clothing company

5362 Westheimer (between Chimney Rock & Galleria) Houston, Texas 961-0781

PROGRAMMERS: Bob Babin, Liselotte Babin, Ed Badeaux, Rick Begley, James Barnett, Thomas Bickley, Steve Berner, Bruce Bryant, Sylvia Cavazos, Theodore J. Clark, Scott Clutha, Joanne Cusack, Patrick Daly, Meena Datt, Jack Drake, Margaret Glaser, Greg Harbar, Raymond Hill, Jack Hopper, Lawrence Jones, Birdie Kypke, Bruce Litvin, Joseph F. Lomax, K. Wayne Lowe, Betty Maldonado, Kenneth R. Petrucci, Brian Pinette, Sam Russell, Sasha, Scott Sommers, Hobart Taylor III, Jay Thomas, Carrie Thornton, Tony Ullrich, Al Vaughn, Ted Vlens, Halley Wood, Jack Woods, Paul Yeager

VOLUNTEERS: All Carter, David Colgin, Rhonda Cook, Carl Dey, Jaoux Neal, Susan Plant, Donne Skowronski, Joseph Sarbu, Danny Dimentichl

KPFT LOCAL ADVISORY BOARD: Gertrude Barnstone, Tony Bennett, James Blue, Mary Daly, Dianne David, Michael Davis, John Henry Faulk, Margaret Glaser, Steven Glaser, Joe Holton, Thelma Meltzer, Louise Millikan, Peter Papademetriou, Denny Samuels, Dennis Sucec, Bill Swenson, Lorenzo Thomas, Pete Whelan

NEWS: Patrick Daly, Margaret Glaser, Bill Holland, Rich Kling, Betty Maldonado, Staven McVicker, Hobart Taylor III, Brian Pries, Allen Platt, Helene Kinnunen Dwight Manning, Doug Currens

OPERATING STAFF: Michael J. August, General Manager; Francis Martin, Chief Engineer; Igor Alexander, Development Director; Laura Rossen, Volunteer Coordinator; Hobart Taylor III, News Director; Steven McVicker, Chief Reporter; Rick Kendall, Subscriptions Registrar; Laura Simpson, Receptionist; Collin Kellman, Music Administrator

ENVIRONMENTAL TASK FORCE: H.C. Clark, Loraine Elms, Ann Hartley, Dr. David Marrack, Mike Malfelt, Bob Morris, Jerry Wagnon

PUBLIC AFFAIRS: Margaret Glaser, Jack Hopper, Jack Woods

PROGRAMMING GUIDE: Igor Alexander, Editor; Donna E. Gold, Art Director; Glynda, Photography; Rich Graphics, Typesetting and Graphics

NATIONAL BOARD, PACIFICA FOUNDATION: R. Gordon Agnew (Honorary Chairperson); Isabel Ategoria; Robert Barron; Carol A. Breshears; Ralph Engelman; Peter Franck (First Vice-President); Margaret Glaser; Oscar Henigberg (Treasurer); Kenneth V. Jenkins (President); David Lampel; Thelma Meltzer (Third Vice-President); Jack O'Dell (Chairperson); Jonas rosenfeld, Jr.; William Sokol; Peter Tagger (Second Vice-President); Tracy A. Westen

Public Statement

KPFT broadcasts from a 600' tower somewhere high atop Mt. Houston. We broadcast in stereo multiplex with an effective radiated power of 50,000 Watts, and currently are licensed for a new transmitter operating at 100,000 Watts. Donations for the new transmitter project are needed and appreciated, and, as a public charity, are totally tax deductible. Our broadcasts are Dolby "B" encoded with 75 microsecond pre-emphasis. We broadcast Dolby calibration tones during regular programming daily at 11am, 6pm., and 11pm. KPFT's studios are at 419 Lovett Boulevard, Houston, Texas 77006. Phone:(713) 526-4000.

KPFT is owned and operated by the Pacifica Foundation, Inc., a non-profit institution, listed in the highest category of deductibility by the I.R.S.; "Public Charity." Other Pacifica stations are: KPFA, 2207 Shattuck Ave., Berkeley, California, 94704; WBAI, 359 E. 62nd St., New York, New York 10021; KPFA, 3729 Cahuenga Boulevard, Los Angeles, California, 91604; WPFW, 1030 15th St. NW, Washington D.C., 20005. Pacifica Program Service (PPS) and Pacifica Tape Library are located at 5316 Venice Boulevard, Los Angeles, California, 90016.

New Shows In January

The Hidden Half-Hour

The Hidden Half-Hour, KPFT's program for children of all ages produced by DeProfundis, Inc. and aired at 8:30 am on Saturdays. The list of shows of the *Hidden Half-Hour* for the month of January is as follows:

January 7

The Nightingale, by Hans Christian Anderson. A re-telling of this most beloved and verneable tale from the master of storytellers, Hans Christian Anderson. An entirely new production conceived with special regard toward authenticity in translation and steeped like a fine jasmine tea with original music composed specifically for this edition.

January 14

The Allegorical Dr. Suess Two offerings from early Dr. Suess's often neglected library. A refreshing return of an author that has become an 'old hat'.

January 21

Uncle Remus Comes to Visit A selection from one of Uncle Remus's long list of poignant but redoubtable yarns. A tribute to one of America's golden ages of literature. A must for true Southerners and disenfranchised Yankees.

On this Saturday morning you will note a couple of yarns Bob Service wrote:

From out of the north where a cold wind blew

We retell the *Shooting of Dan McGrew*. And to fire your sourdough sense of glee We will...light the *Cremation of Dan McGee*.

The northern lights have seen queer sights

But the queerest they ever did see.

Will be our telling of *Dan McGrew* And the *Cremation of Sam McGee*



In One Ear

After *All Things Considered*, consider *In One Ear* aired weekdays from 4:30 to 6:00 p.m.

Whether you are cooking up goodies waiiting for family to get home, or shoving the Chevy down the old interstate, you can take in new music, opinions, reviews, and samples of public affairs programs: *In One Ear*, Sasha and her drive time exercises (best performed at traffic signals). After one of our traffic reports from Houston traffic central, Berner On Broadway...reviews of performing arts in Houston. Brent (High Rent) Northup goes to the movies for you, and tells you what he thinks is good...*Atzlan* and *Third World Experience*, *Third World programming*...free speech messages, (listener's comments on any issue), opinions, observations, and music, music, music, in your ear...*In One Ear*. Art Gnuvo hosts.



Traffic Reports

Beginning January 2, KPFT will provide traffic reports courtesy of Houston Traffic Central.

Houston Traffic Central has an extensive C.B. network monitoring traffic flow, and alerting HTC to major accidents that take the rush out of rush hour traffic.

Listen during *Beginnings* 6:00-9:00 a.m. and during *In One Ear* 4:30-6:00 p.m. Mondays through Fridays for our HTC updates.



Grand Piano

Grand Piano is a new series from NPR which will be aired on Thursday nights at 10:00 PM. It consists of classical music composed for pianos and played by a selection of the most promising new pianists emerging in the United States and abroad. Whether you are a serious student of the Classical piano, or a non-playing aficionado, this is your show.

January 19

SCHUMANN: Sonata for Piano in G Minor

RACHMANINOV: Preludes: (F-Sharp Minor, op. 23; D Major, op. 23; G Minor, op. 23; E Minor, op. 32; B Minor, op. 32; B-Flat Major, op. 23)

LISZT: Etudes: "Harmonies du soir" (D-Flat Major); "Chasse-neige" (B-Flat Minor); "Mazeppa" (D Minor); "Feux Follets" (B-Flat Major); "Vision" (G Minor); "Eroica" (E-Flat Major); "Wilde Jagd" (C Minor); "Etude" (F Minor)

encores by LISTZ & SCRIBAN

Lazar Berman, piano

(Recorded in the Edward C. Elliot Hall of Music on the Campus of Purdue University)

January 26

J.S. BACH: Sonata in D Minor, BWV 964 (Bach's own transcription for keyboard of his A Minor Sonata for Unaccompanied Violin)

J.S. BACH: Sonata in A Minor, BWV 965 (Bach's transcription of a quartet by J.A. Reinken)

CHARLES TOMLINSON GRIFFES: Sonata for Piano (1918)

Performances by Michael Landrum, Jack Winerock and Randall Hodgkinson, pianists

(These performances were from the 1976 Bach International Piano Competition, recorded in Washington, D.C. Out of a perfect score of 100, Mr. Landrum was awarded 98.93, Mr. Winerock 98.38 and Mr. Hodgkinson 97.73.)

Noticias En Espanol

Beginning Monday January 2, KPFT will present a daily Spanish language news broadcast...12:20-12:30 p.m.

News of Houston's Latin and Chicano communities, a community calendar, and headline local stories will be presented by Ishmael Reyes.

Listen after the *Noon News* for *Noticias En Espanol* Monday through Friday at 12:20-12:30 p.m. (Also listen for our other Spanish language programming, *Mosaico Musical*, and *Atzlan*).



Houston/World

"Houston/World" will broadcast interviews with world famous people as well as people from the Houston community. This program will be live on alternating Tuesdays and your participation is encouraged by calling in at 526-4000.

An interview with Henry Miller. Miller, author of *Tropic of Cancer*, *Tropic of Capricorn*, *Black Spring*, *Sexus*, *Nexus*, and *Plexus* speaks with Connie Goldman in a rare interview. This hour long interview, from National Public Radio on KPFT, 8:00 p.m. Tuesday evening January 3rd.

Tuesday, January 17th on *Houston/World*, KPFT will broadcast an interview with Margaret Mead.



Jazzzzz Progressions



Note: In addition to the VERY BEST in JAZZZZZ Listening, 1978 brings the addition of "Houston JAZZZZZ-A Weekend Calendar". Also interviews with the artist that Make It Happen.

Programming suggestions will be graciously entertained. Write to:

JAZZZZZ PROGRESSIONS
c/o Lawrence Jones
KPFT Radio
419 Lovett
Houston, Texas 77006
Daily 6:15am



The Glorious Qur'an

Readings from the Sacred Book, the Glorious Qur'an. Preserved intact more than Thirteen Centuries, the Qur'an is a record of the minutest details of the eventful life of it's promulgator, Prophet Muhammad (May peace and blessings of ALLAH be on him).

The daily presentation consists of an Arabic reading with English translation and commentary.

Avant/Garde

In celebration of the coming of Karl Stockhausen to Houston this January, the month's programming will be dedicated to his works. Stockhausen is perhaps the most important composer of the post-war era and a leader in all forms of contemporary music. It is an honor to have him in this city, and KPFT's *Avante-Garde* program is pleased to spend a month exploring his compositions.



Berner on Broadway

January 6

I've Heard That Song Before, a special program devoted to show tunes used in more than one show.

January 13

2 by 2-music by Richard Rogers, starring Danny Kaye. A musical Noah's Ark.

January 20

House of Flowers-Truman Capote, Harold Arlen, Pearl Bailey—How bad can it be? Book and lyrics by Truman.

January 27

Candide-The original Bernstein score. One of the great cult legends of Broadway.

Hi-Fi Show

If subwoofers, binaural tape, direct-to-disc, damping factor or moving coil mean anything to you, you'll want to check the *Hi-Fi Show*. No compression, no limiting; a signal as hi-fi as current technology makes possible. Listen. You might find out your tuner is really okay; it's the stations you listen to that are low budget. In January, hi-fi personalities get interviewed, direct-to-disc records get played, subwoofers and power supplies are discussed.



Film Thoughts

Brent Northup, our film critic, has scheduled the following two interviews for his Thursday evening show. Northup can be heard each weekday at 5:50 PM with a ten minute roundup of Tonight's Movies!

January 5

Guest: Joe Bassett, Manager of Briar Grove Cinema. Plus-weeks ahead in Houston film, free tickets, film music, and special features.

January 19

Guest: Professor William Hawes, University of Houston Film Professor. Plus-weeks ahead in Houston film, free tickets, film music, and discussion of the New York Film Critics selections as Best Film of the Year.

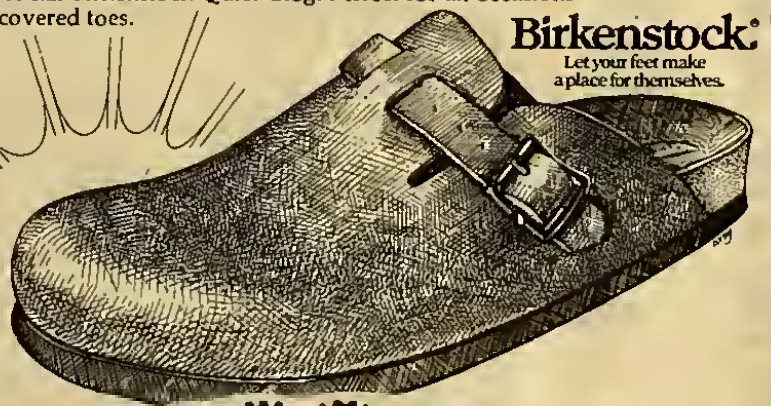
The Formal Birkenstock

Built on the belief that a clog should be seen and not heard, the Formal Birkenstock is virtually sound free.

The soft cork footbed which provides the famous Birkenstock fit also accounts for the absence of clunk.

The Formal Birkenstock Quiet Clog. Perfect for all occasions requiring covered toes.

Birkenstock
Let your feet make a place for themselves.



5366 Westheimer Road
420 Greenspoint Mall
Houston, Texas

FOOTGEAR



AIWA.

The Aiwa 1250 cassette tape deck has great sound for \$230—coupled with an elegant, easy-to-use design and technical features (Dolby system recording, peak reading LED indicator, and idler arm for accurate speed) that make it a snap to get great recordings. All backed with the Aiwa 2 years parts and labor guarantee and Audio Concepts own prompt service. If you've been thinking about a cassette deck, give us a call.

Major credit cards accepted, zero-down financing available and we ship prepaid anywhere in Texas.

Audio Concepts

2200 SW Freeway at Greenbriar Houston, Texas 77098 713/527-0774

**Support Our Advertisers
They Help Support Us!**

Nesadel CLUB

PASADENA, TEXAS 62802

Appearing Nightly

THE LIBERTY BROTHERS

Middle of the Road

Music

7325 Spencer HWY. 479-9185

Gilley's

PASADENA TEXAS

FOOD,
DRINKS' &
DANCE

Open Every Night
4500 Spencer Hwy.
946-9842

APPEARING NIGHTLY: Johnny Lee,
Kenny Fulton, Bayou City Beats and Toni Holcomb

Call for appearance dates
of special guest performers.

DAYBREAK hair cut parlor

Open: 10:00 AM - 7:00 PM
Tuesday through Saturday

Arts & Crafts Gallery
Peaceful Atmosphere



2437 1/2
University Blvd.
522-2350 for Appointment

ATTENTION:

We can't afford
champagne
for New Year's Day.
We're going to have to

DRINK A BRICK.

Help us celebrate
New Year's
properly next year.
Send in your subscription
money today.

(See page 1 for more
information.)

